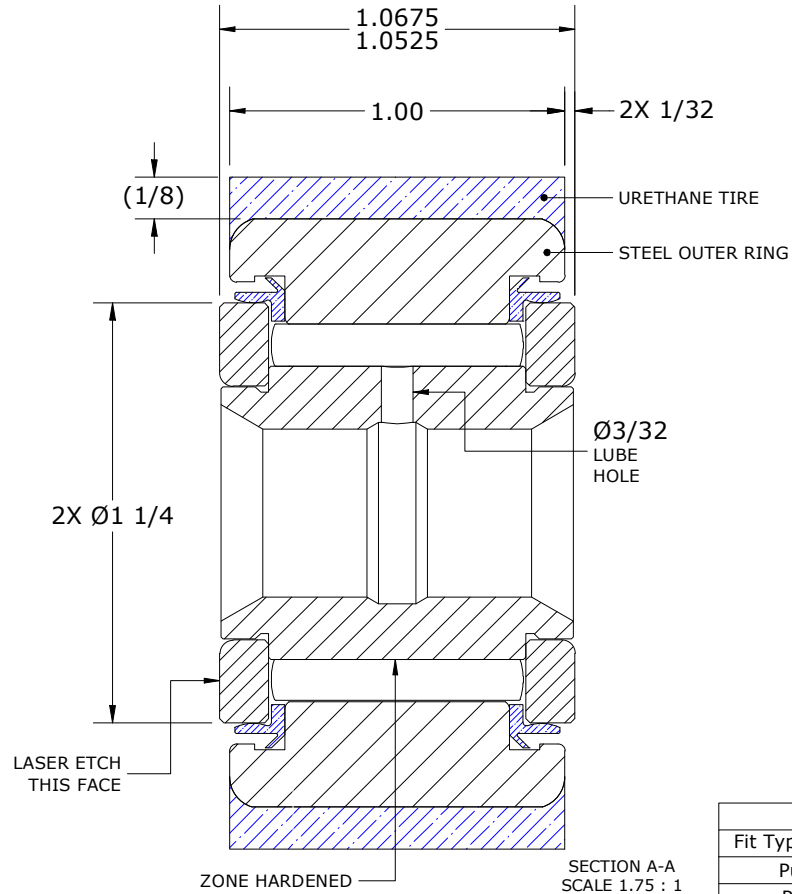
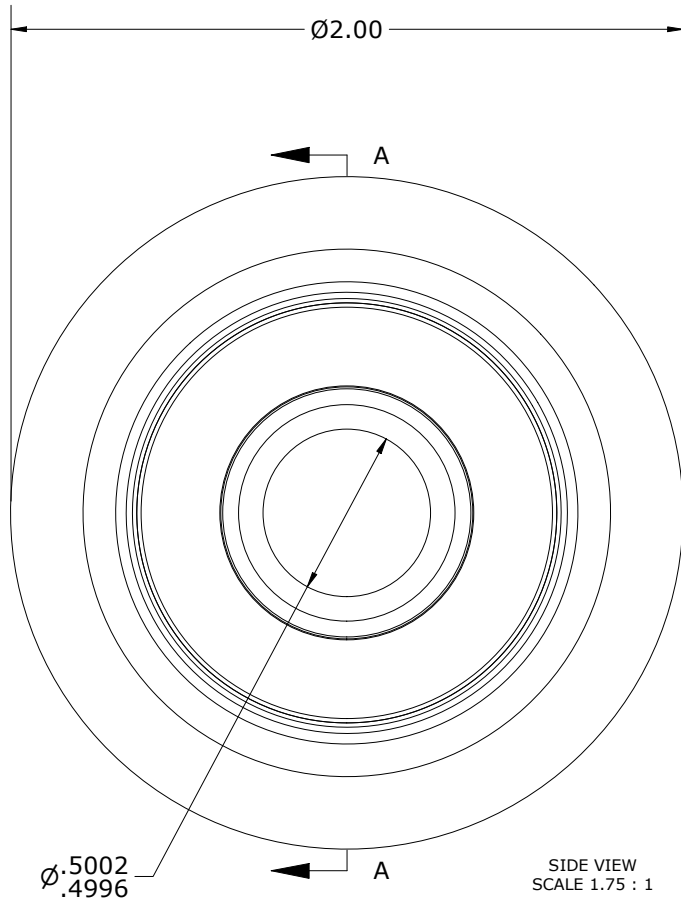
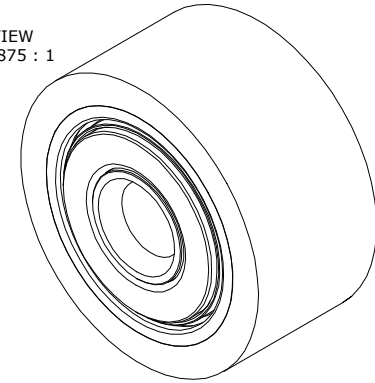


NOTES:

1. BEARING IS PACKED WITH NLGI GRADE 2, LITHIUM BASED GREASE UNLESS OTHERWISE SPECIFIED
2. ALL EXPOSED STEEL SURFACES HAVE BLACK OXIDE
3. CUSTOM LASER ETCHING IS AVAILABLE UPON REQUEST
4. URETHANE SPECIFICATIONS:
 - A. DUROMETER = 80 SHORE A
 - B. COLOR = BLUE

ISO VIEW
SCALE .875 : 1



Recommended Shaft Fits		
Fit Type - Dimension	Ø (Inch)	Ø (mm)
Push - Max	.4997	12.6924
Push - Min	.4993	12.6822
Drive - Max	.5003	12.7076
Drive - Min	.4999	12.6975
Press - Max	.5007	12.7178
Press - Min	.5003	12.7076

MATERIAL NOTES:

- OUTER RING - BEARING STEEL, HEAT TREATED
- INNER RING - BEARING STEEL, ZONE HARDENED
- NEEDLE ROLLER(S) - BEARING STEEL, HEAT TREATED
- WASHER(S) - BEARING STEEL, HEAT TREATED
- SEAL(S) - SYNTHETIC
- TIRE - URETHANE

CUSTOMER PART#

XX = ± .01
XXX = ± .005
XXXX = ± .0005
ANGLES = ± 2'
INCH [METRIC]
FRACTION = ± 1/64

ENGINEERING CHANGE ORDER NOTE

CARTER STANDARD SURFACE FINISH IS MEASURED IN "Ra" UNITS UNLESS OTHERWISE SPECIFIED.

CARTER MANUFACTURING IS NOT RESPONSIBLE FOR TYPOGRAPHICAL ERRORS

REVISION

D	AUTHOR BY HG
REVISION BY DJB	DATE 9/5/2023

CARTER MANUFACTURING CO., INC.
GRAND HAVEN, MICHIGAN 49417

PART NAME: ASSEMBLY

PRODUCT TYPE: Standard CF/YR

DRAWN BY SGW	CHK'D BY MD	SALES NC	MATERIAL NOTED
DATE 12/21/2007	DATE 9/5/2023	DATE 9/5/2023	SHEET 1 OF 2