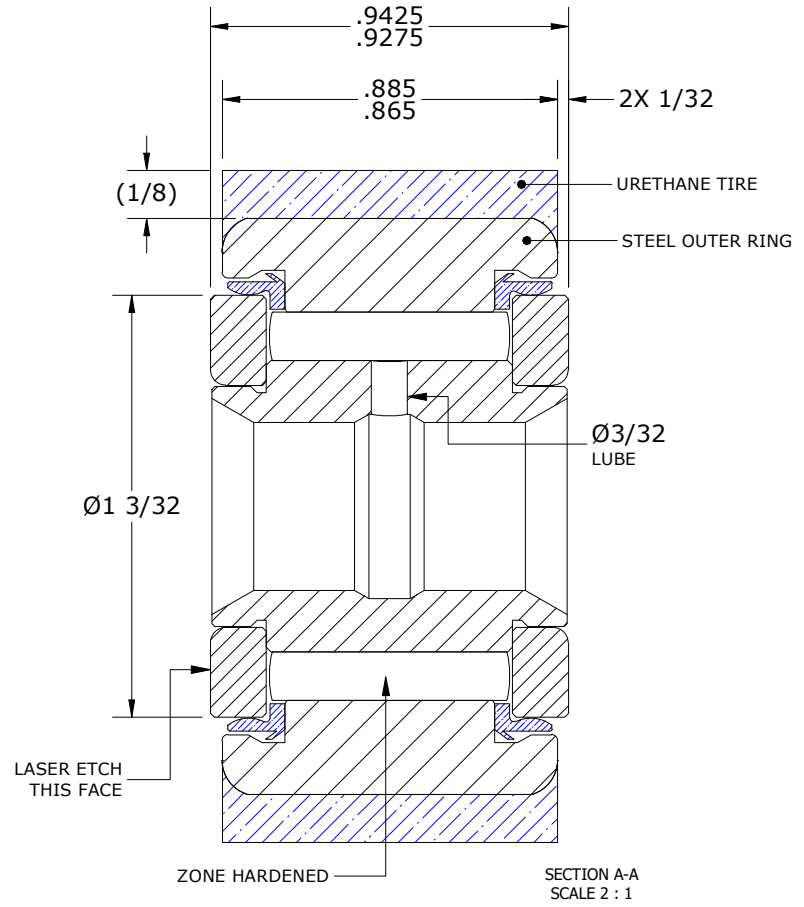
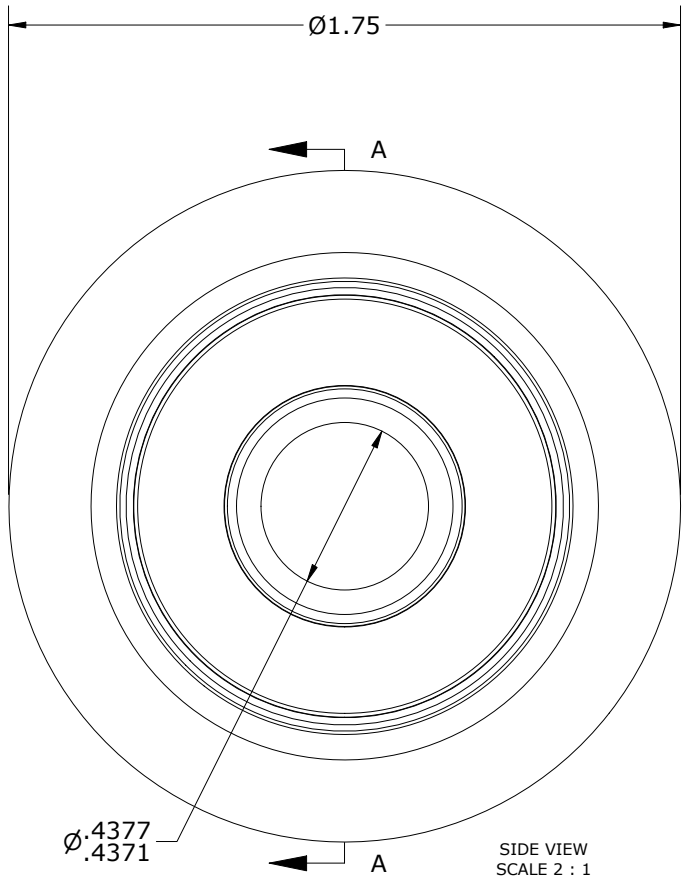
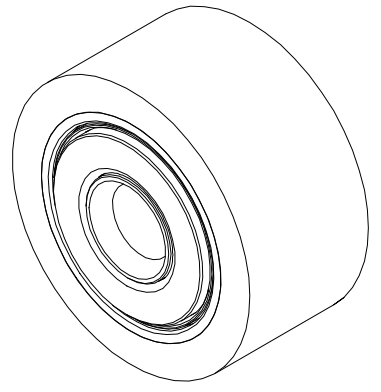


- NOTES:
 1. BEARING IS PACKED WITH NLGI GRADE 2, LITHIUM BASED GREASE UNLESS OTHERWISE SPECIFIED
 2. ALL EXPOSED STEEL SURFACES HAVE BLACK OXIDE
 3. CUSTOM LASER ETCHING IS AVAILABLE UPON REQUEST
 4. URETHANE SPECIFICATIONS:
 A. DUROMETER = 80 SHORE A
 B. COLOR = BLUE

ISO VIEW
SCALE 1 : 1



Recommended Shaft Fits		
Fit Type - Dimension	Ø (Inch)	Ø (mm)
Push - Max	.4372	11.1049
Push - Min	.4368	11.0947
Drive - Max	.4376	11.1150
Drive - Min	.4372	11.1049
Press - Max	.4378	11.1201
Press - Min	.4374	11.1100

MATERIAL NOTES:
 OUTER RING - BEARING STEEL, HEAT TREATED
 OUTER TIRE - URETHANE
 INNER RING - BEARING STEEL, ZONE HARDENED
 NEEDLE ROLLER(S) - BEARING STEEL, HEAT TREATED
 WASHER(S) - BEARING STEEL, HEAT TREATED
 SEAL(S) - SYNTHETIC

CUSTOMER PART#	XX = ± .01 XXX = ± .005 XXXX = ± .0005 ANGLES = ± 1' INCH [METRIC] FRACTION = ± 1/32
ENGINEERING CHANGE ORDER NOTE	

CARTER MANUFACTURING IS NOT RESPONSIBLE FOR TYPOGRAPHICAL ERRORS		CARTER MANUFACTURING CO., INC. GRAND HAVEN, MICHIGAN 49417			
REVISION		PART NAME: ASSEMBLY		PRODUCT TYPE: YRT	
D	AUTHOR BY HG	DRAWN BY SGW	CHK'D BY MD	SALES KR	MATERIAL NOTED
REVISION BY SGW	DATE 7/23/2020	DATE 4/1/2009	DATE 7/23/2020	DATE 4/1/2009	SHEET 1 OF 2