

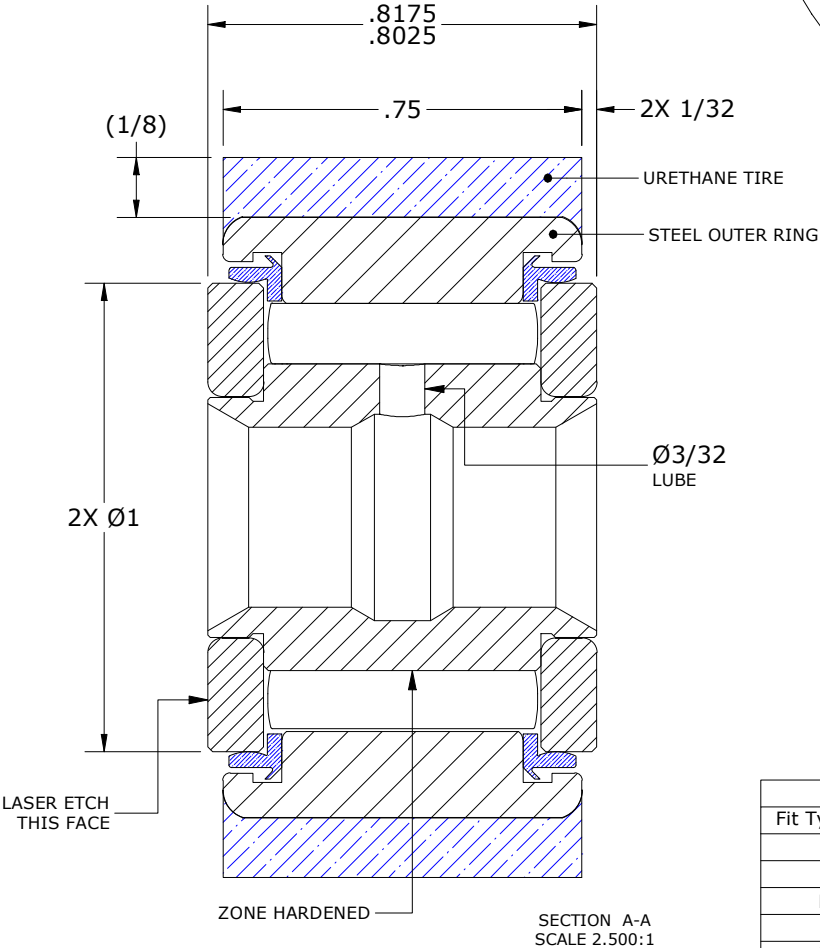
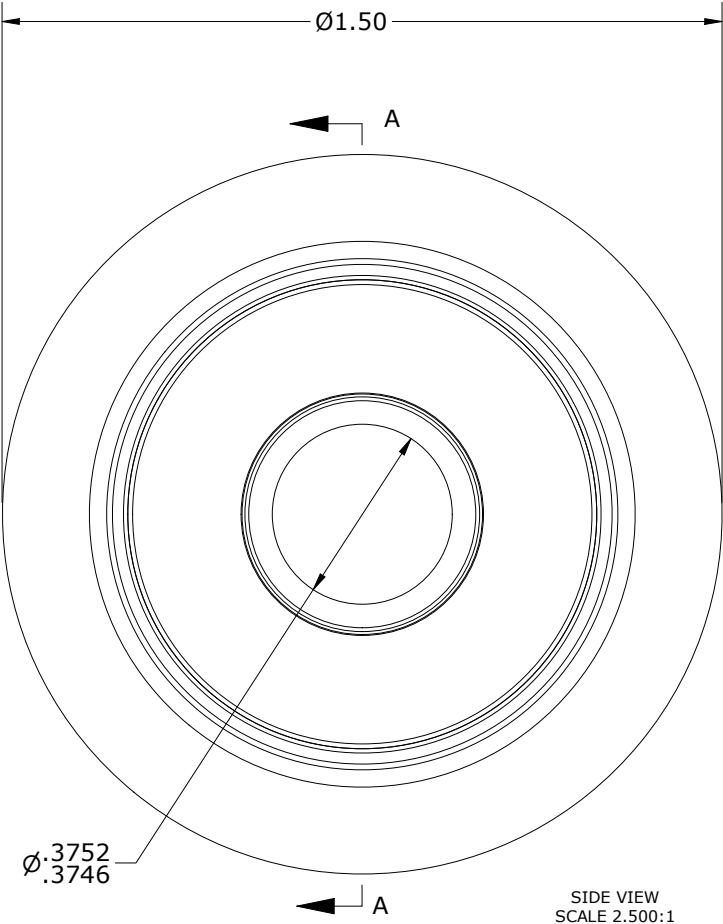
1. BEARING IS PACKED WITH NLGI GRADE 2, LITHIUM BASED GREASE UNLESS OTHERWISE SPECIFIED
2. ALL EXPOSED STEEL SURFACES HAVE BLACK OXIDE
3. CUSTOM LASER ETCHING IS AVAILABLE UPON REQUEST
4. URETHANE SPECIFICATIONS:

A. DUROMETER = 80 SHORE A

B. COLOR = BLUE

ISO VIEW

SCALE 1.250:1



Recommended Shaft Fits		
Fit Type - Dimension	Ø (Inch)	Ø (mm)
Push - Max	.3747	9.5174
Push - Min	.3743	9.5072
Drive - Max	.3753	9.5326
Drive - Min	.3749	9.5225
Press - Max	.3755	9.5377
Press - Min	.3751	9.5275

MATERIAL NOTES: OUTER RING - BEARING STEEL, HEAT TREATED OUTER TIRE - URETHANE INNER RING - BEARING STEEL, ZONE HARDENED NEEDLE ROLLER(S) - BEARING STEEL, HEAT TREATED WASHER(S) - BEARING STEEL, HEAT TREATED SEAL(S) - SYNTHETIC	CUSTOMER PART#	CARTER MANUFACTURING IS NOT RESPONSIBLE FOR TYPOGRAPHICAL ERRORS	CARTER MANUFACTURING CO., INC. GRAND HAVEN, MICHIGAN 49417							
			REVISION			PART NAME: ASSEMBLY		PRODUCT TYPE: YRT		
	ENGINEERING CHANGE ORDER NOTE		B	AUTHOR BY HG	DRAWN BY SGW	CHK'D BY MD	SALES KPR	MATERIAL NOTED		
				REVISION BY SGW	DATE 7/23/2020	DATE 9/23/2008	DATE 7/23/2020	DATE 9/23/2008	SHEET 1 OF 2	