

NOTES:

1. BEARING IS PACKED WITH NLGI GRADE 2, LITHIUM BASED GREASE UNLESS OTHERWISE SPECIFIED
2. ALL EXPOSED STEEL SURFACES HAVE BLACK OXIDE
3. CUSTOM LASER ETCHING IS AVAILABLE UPON REQUEST
4. URETHANE SPECIFICATIONS:
  - A. DUROMETER = 80 SHORE A
  - B. COLOR = BLUE

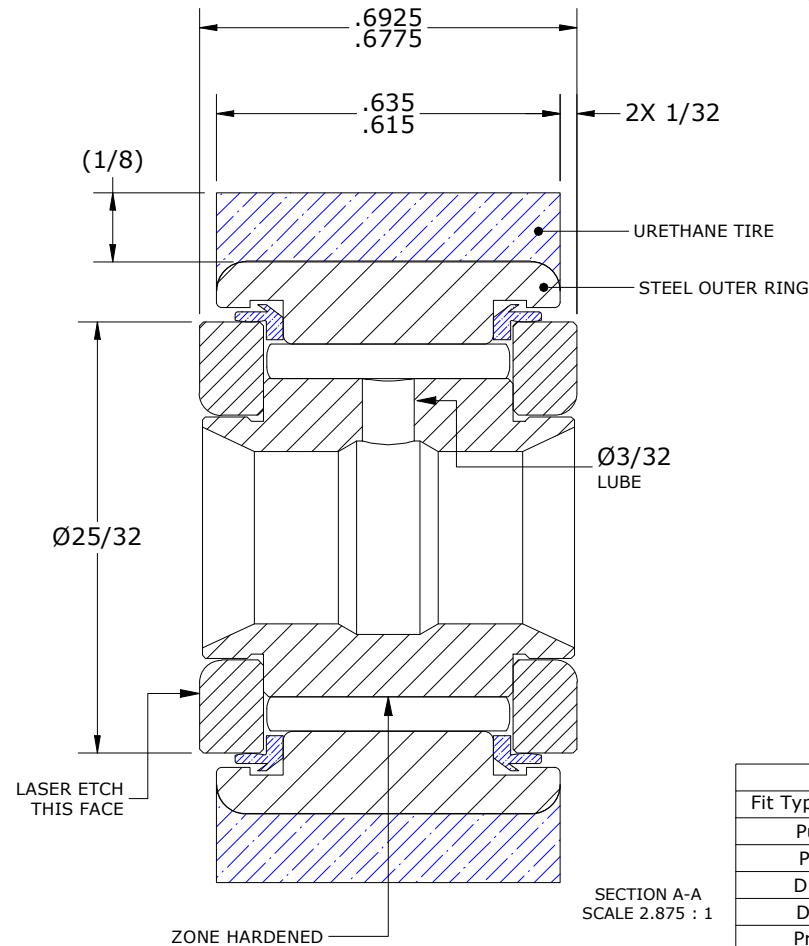
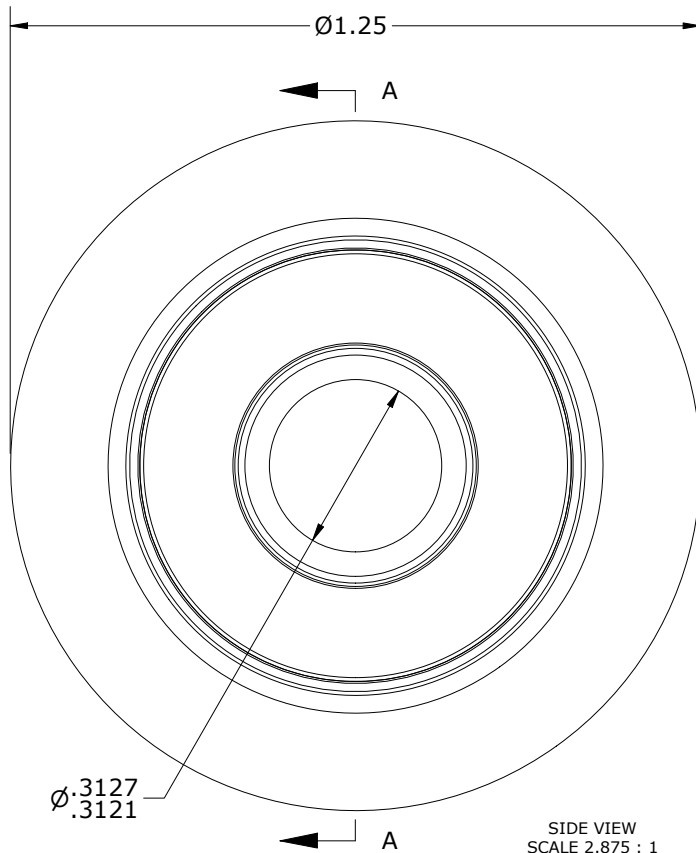
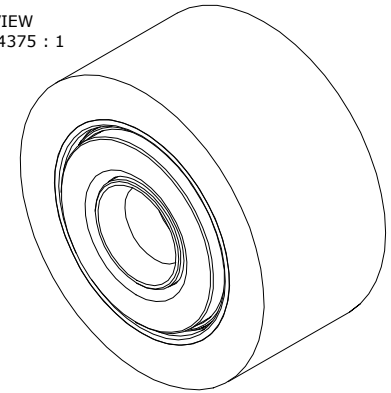
MS NO.

NSN NO.

DRAWING NO.

YRT-40-S

ISO VIEW  
SCALE 1.4375 : 1



Recommended Shaft Fits		
Fit Type - Dimension	Ø (Inch)	Ø (mm)
Push - Max	.3122	7.9300
Push - Min	.3118	7.9197
Drive - Max	.3128	7.9451
Drive - Min	.3124	7.9350
Press - Max	.3130	7.9502
Press - Min	.3126	7.9400

MATERIAL NOTES:

- OUTER RING - BEARING STEEL, HEAT TREATED
- OUTER TIRE - URETHANE
- INNER RING - BEARING STEEL, ZONE HARDENED
- NEEDLE ROLLER(S) - BEARING STEEL, HEAT TREATED
- WASHER(S) - BEARING STEEL, HEAT TREATED
- SEAL(S) - SYNTHETIC

CUSTOMER PART#

XX = ± .01  
XXX = ± .005  
XXXX = ± .0005  
ANGLES = ± 1'  
INCH [METRIC]  
FRACTION = ± 1/32

CARTER MANUFACTURING IS NOT RESPONSIBLE FOR TYPOGRAPHICAL ERRORS

**CARTER MANUFACTURING CO., INC.**

GRAND HAVEN, MICHIGAN 49417

ENGINEERING CHANGE ORDER NOTE

REVISION

PART NAME: ASSEMBLY

PRODUCT TYPE: YRT

C

AUTHOR BY

DRAWN BY

CHK'D BY

SALES

MATERIAL

HG

SGW

MD

KR

NOTED

REVISION BY

DATE

DATE

DATE

DATE

SHEET

SGW

7/23/2020

2/6/2009

7/23/2020

2/6/2009

1 OF 2