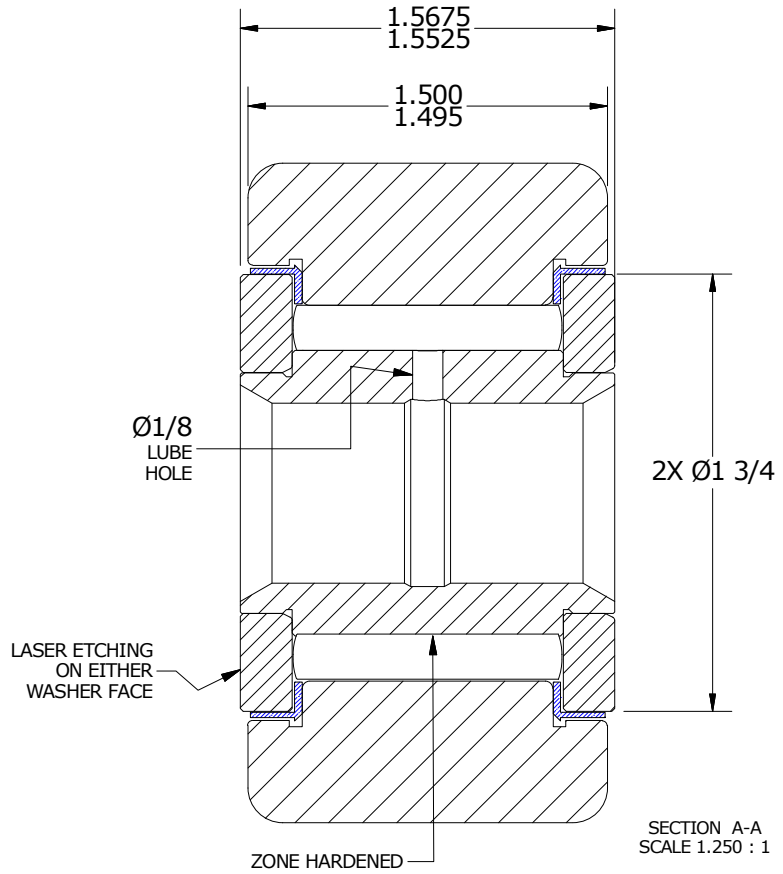
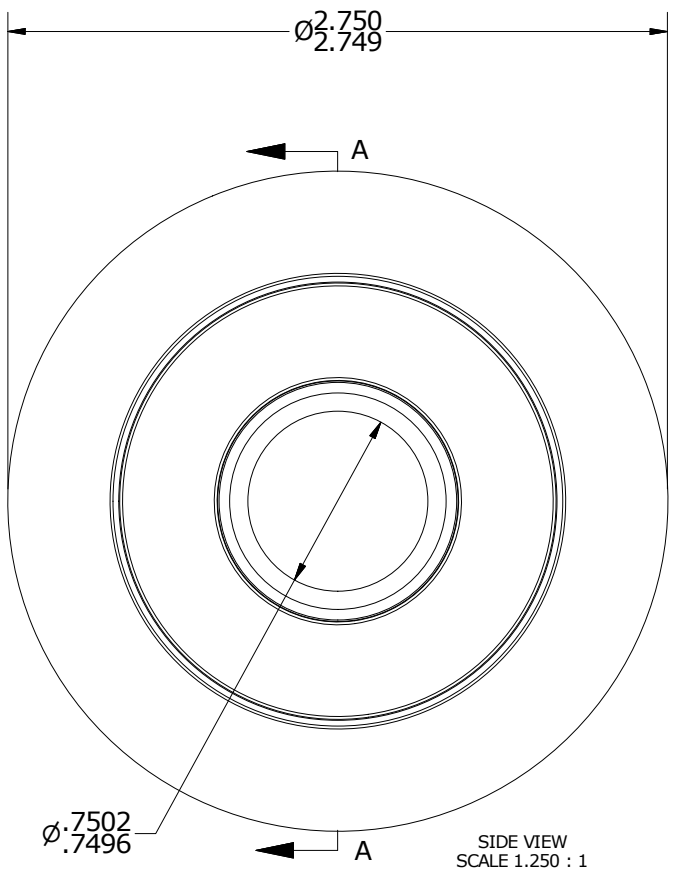
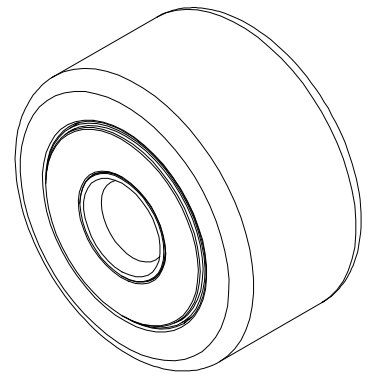


LOAD RATINGS		
RATING	lbf	Newtons
RADIAL BASIC DYNAMIC	11,720	52,133
MAXIMUM STATIC CAPACITY	32,900	146,346

NOTES:  
 1. BEARING IS PACKED WITH NLGI GRADE 2, LITHIUM BASED GREASE (UNLESS OTHERWISE SPECIFIED)  
 2. ALL EXPOSED SURFACES AS MOUNTED HAVE BLACK OXIDE  
 3. LIMITING SPEED:  
 A. GREASE = 1,050 RPM  
 4. CUSTOM LASER ETCHING UPON REQUEST

MS NO. \_\_\_\_\_ NSN NO. \_\_\_\_\_ DRAWING NO. YNB-88-S

ISO VIEW  
SCALE .625 : 1



Recommended Shaft Fits		
Fit Type - Dimension	Ø (Inch)	Ø (mm)
Push - Max	.7497	19.0424
Push - Min	.7493	19.0322
Drive - Max	.7503	19.0576
Drive - Min	.7499	19.0475
Press - Max	.7507	19.0678
Press - Min	.7504	19.0576

MATERIAL NOTES:  
 OUTER RING- BEARING STEEL, HEAT TREATED  
 INNER RING- BEARING STEEL, ZONE HARDENED  
 NEEDLE ROLLER(S) - BEARING STEEL, HEAT TREATED  
 WASHER(S) - STEEL, HEAT TREATED  
 SEAL(S) - SYNTHETIC

CUSTOMER PART#	XX = ± .01 XXX = ± .005 XXXX = ± .0005 ANGLES = ± 1' INCH [METRIC] FRACTION = ± 1/32
ENGINEERING CHANGE ORDER NOTE	

CARTER MANUFACTURING IS NOT RESPONSIBLE FOR TYPOGRAPHICAL ERRORS	
REVISION	
<b>B</b>	AUTHOR BY DB
REVISION BY SGW	DATE 11/12/2008

<b>CARTER MANUFACTURING CO., INC.</b> GRAND HAVEN, MICHIGAN 49417				PART NAME: ASSEMBLY		PRODUCT TYPE: CNB	
DRAWN BY GJP	CHK'D BY MD	SALES KPR	MATERIAL NOTED	DATE 11/12/1999	DATE 11/12/2008	DATE 11/11/1999	SHEET 1 OF 2