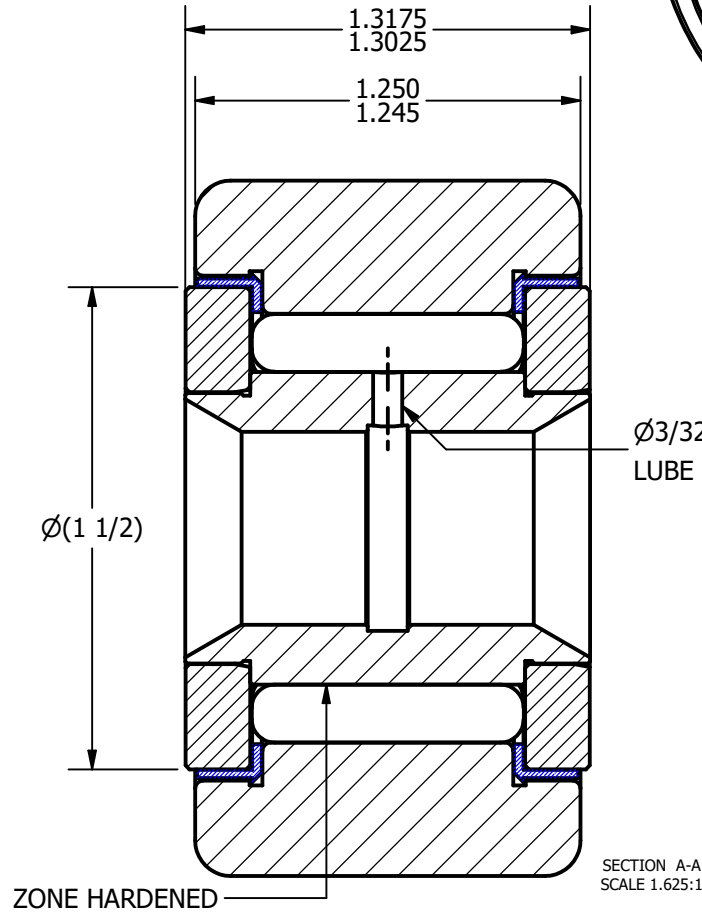
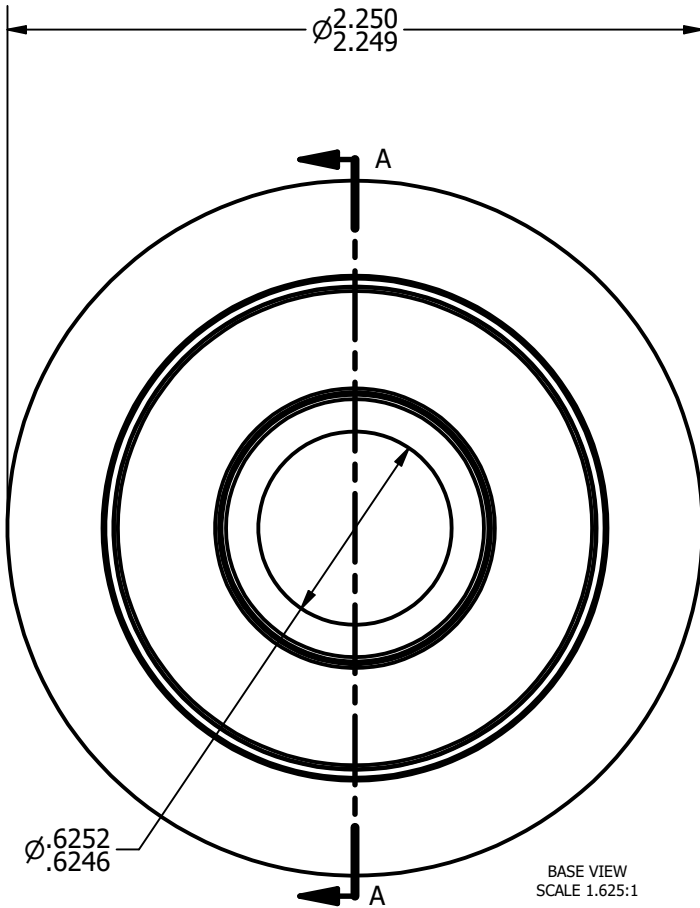
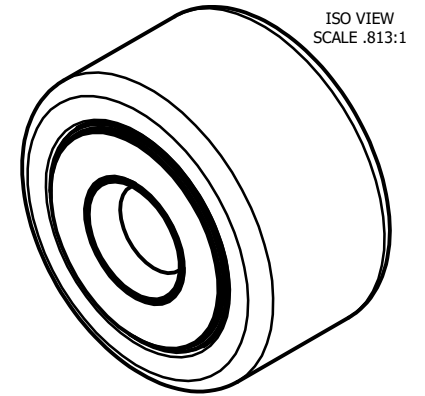


LOAD RATINGS	
RATING	Lbs
RADIAL BASIC DYNAMIC	8,090
MAXIMUM STATIC CAPACITY	21,140

- NOTES:
 1. BEARING IS PACKED WITH LITHIUM BASED #2 WEIGHT GREASE
 2. ALL EXPOSED SURFACES HAVE BLACK OXIDE

WSN NO.

DRAWING NO. **YNB-72-S**



MATERIAL NOTES:

OUTER RACE - BEARING STEEL, HEAT TREATED
 INNER RACE - BEARING STEEL, ZONE HARDENED
 NEEDLE ROLLER - BEARING STEEL, HEAT TREATED
 WASHER - COLD ROLLED STEEL, HEAT TREATED
 SEAL - SYNTHETIC

CUSTOMER PART#

.XX = $\pm .01$
 .XXX = $\pm .005$
 .XXXX = $\pm .0005$
 ANGLES = $\pm 1'$
 INCH [METRIC]

CARTER MANUFACTURING IS
 NOT RESPONSIBLE FOR
 TYPOGRAPHICAL ERRORS

CARTER MANUFACTURING CO., INC.

GRAND HAVEN, MICHIGAN 49417

REVISION

PART NAME: **ASSEMBLY**

SHEET 1 OF 2

B

AUTHOR. BY

DRAWN BY

CHK'D BY

SALES

MATERIAL

DB

GJP

MD

KPR

NOTED

REV. BY

DATE

DATE

DATE

DATE

DRAWING NO.

SGW

8/11/2010

11/17/1999

8/11/2010

11/16/1999

YNB-72-S