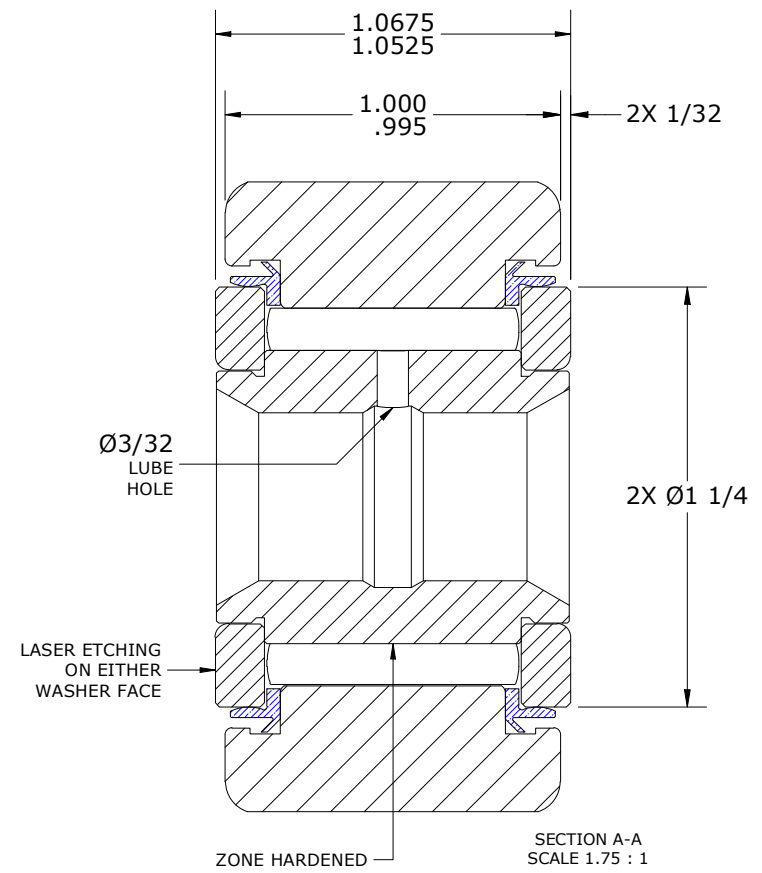
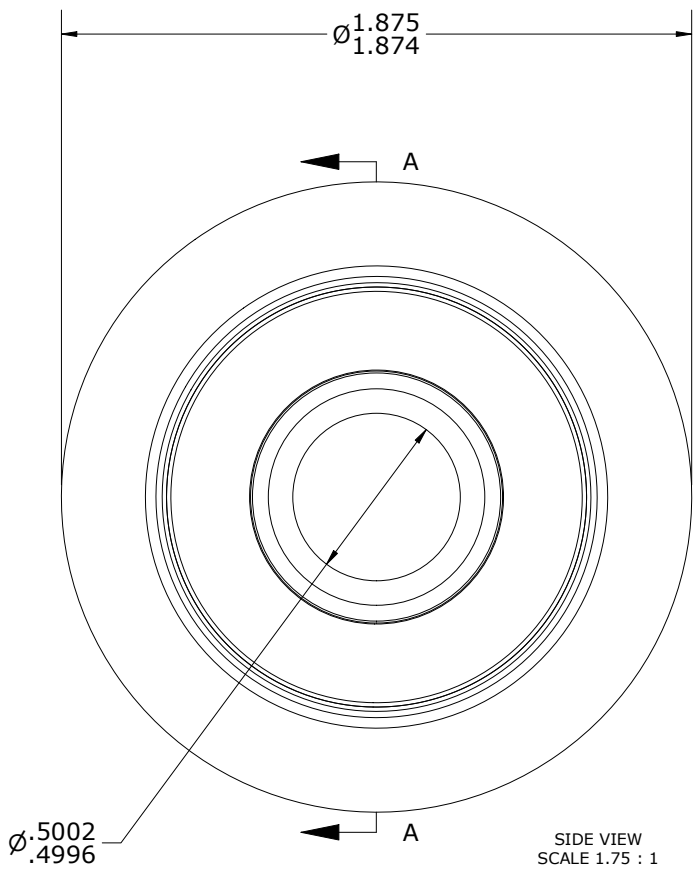
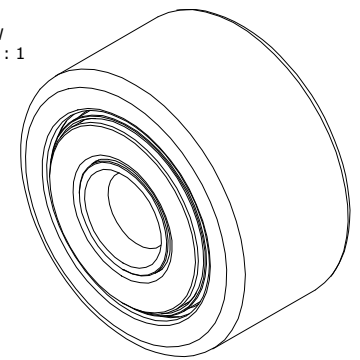


LOAD RATINGS		
RATING	Lbf	Newtons
RADIAL BASIC DYNAMIC	6,385	28,402
MAXIMUM STATIC CAPACITY	15,840	70,460

- NOTES:
1. BEARING IS PACKED WITH NLGI GRADE 2, LITHIUM BASED GREASE (UNLESS OTHERWISE SPECIFIED)
  2. ALL EXPOSED SURFACES AS MOUNTED HAVE BLACK OXIDE
  3. LIMITING SPEED:
    - A. GREASE = 2,000 RPM
  4. CUSTOM LASER ETCHING UPON REQUEST

ISO VIEW  
SCALE .875 : 1



Recommended Shaft Fits		
Fit Type - Dimension	Ø (Inch)	Ø (mm)
Push - Max	.4997	12.6924
Push - Min	.4993	12.6822
Drive - Max	.5003	12.7076
Drive - Min	.4999	12.6975
Press - Max	.5007	12.7178
Press - Min	.5003	12.7076

MATERIAL NOTES:

OUTER RACE - BEARING STEEL, HEAT TREATED

INNER RACE - BEARING STEEL, ZONE HARDENED

NEEDLE ROLLER(S) - BEARING STEEL, HEAT TREATED

WASHERS - BEARING STEEL, HEAT TREATED

SEAL(S) - SYNTHETIC

CUSTOMER PART#	XX = ± .01 XXX = ± .005 XXXX = ± .0005 ANGLES = ± 2' INCH [METRIC] FRACTION = ± 1/64
<b>ENGINEERING CHANGE ORDER NOTE</b>	
CARTER STANDARD SURFACE FINISH IS MEASURED IN "Ra" UNITS UNLESS OTHERWISE SPECIFIED.	

CARTER MANUFACTURING IS NOT RESPONSIBLE FOR TYPOGRAPHICAL ERRORS

REVISION	
<b>C</b>	AUTHOR BY HG
REVISION BY DJB	DATE 8/31/2023

**CARTER MANUFACTURING CO., INC.**  
GRAND HAVEN, MICHIGAN 49417

PART NAME: ASSEMBLY				PRODUCT TYPE: Standard CF/YR	
DRAWN BY GJP	CHK'D BY MD	SALES NC	MATERIAL NOTED	DATE 8/31/2023	SHEET 1 OF 2