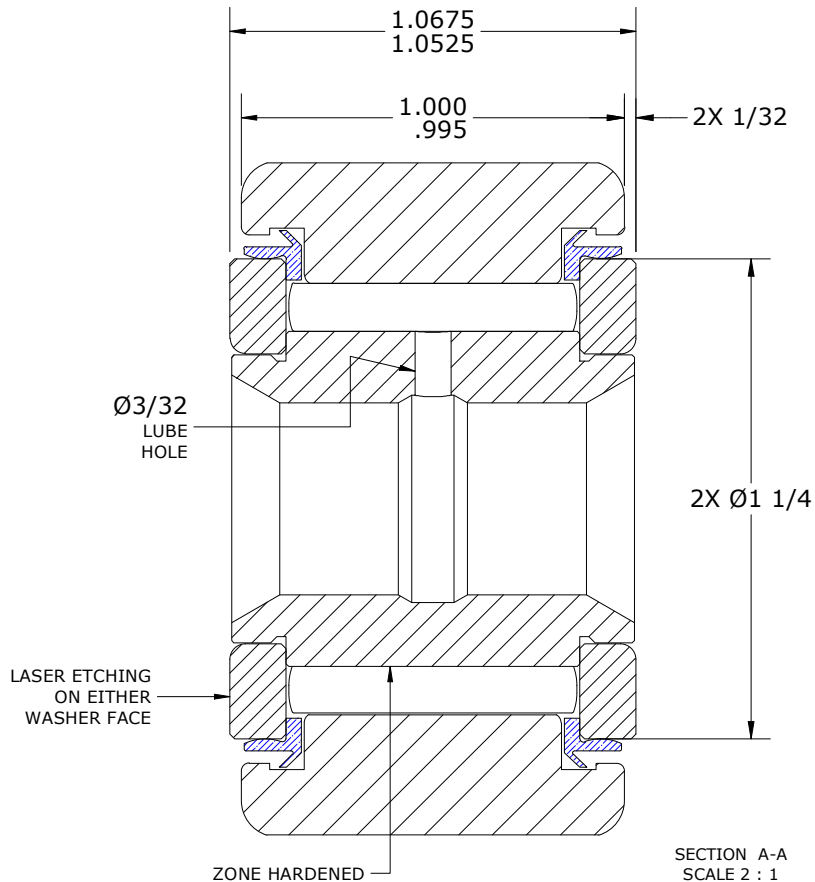
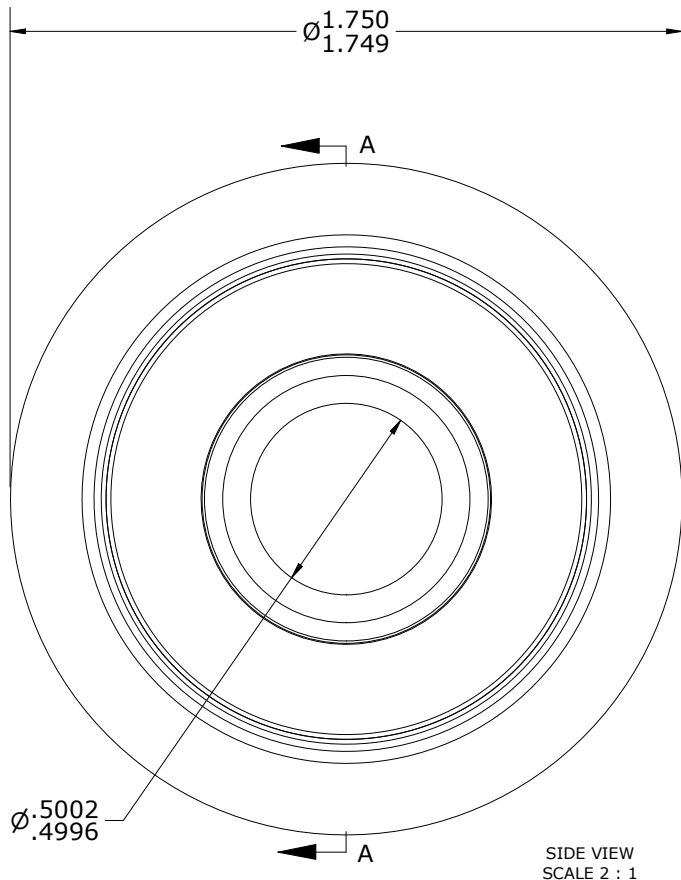
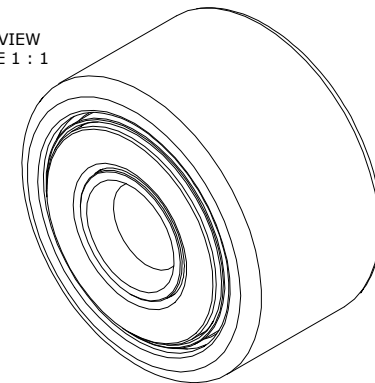


| LOAD RATINGS | | |
|-------------------------|--------|---------|
| RATING | lbf | Newtons |
| RADIAL BASIC DYNAMIC | 6,385 | 28,402 |
| MAXIMUM STATIC CAPACITY | 15,840 | 70,460 |

- NOTES:
- BEARING IS PACKED WITH NLGI GRADE 2, LITHIUM BASED GREASE (UNLESS OTHERWISE SPECIFIED)
 - ALL EXPOSED SURFACES AS MOUNTED HAVE BLACK OXIDE
 - LIMITING SPEED:
 - GREASE = 2,200 RPM
 - CUSTOM LASER ETCHING UPON REQUEST

DRAWING NO. YNB-56-S

ISO VIEW
SCALE 1 : 1



| Recommended Shaft Fits | | |
|------------------------|----------|---------|
| Fit Type - Dimension | Ø (Inch) | Ø (mm) |
| Push - Max | .4997 | 12.6924 |
| Push - Min | .4993 | 12.6822 |
| Drive - Max | .5003 | 12.7076 |
| Drive - Min | .4999 | 12.6975 |
| Press - Max | .5007 | 12.7178 |
| Press - Min | .5003 | 12.7076 |

MATERIAL NOTES:

- OUTER RING- BEARING STEEL, HEAT TREATED
- INNER RING- BEARING STEEL, ZONE HARDENED
- NEEDLE ROLLER(S) - BEARING STEEL, HEAT TREATED
- WASHER(S) - BEARING STEEL, HEAT TREATED
- SEAL(S) - SYNTHETIC

| | |
|--|---|
| CUSTOMER PART# | XX = ± .01 XXX = ± .005 XXXX = ± .0005 ANGLES = ± 2' INCH [METRIC] FRACTION = ± 1/64 |
| ENGINEERING CHANGE ORDER NOTE | |
| CARTER STANDARD SURFACE FINISH IS MEASURED IN "Ra" UNITS UNLESS OTHERWISE SPECIFIED. | |

CARTER MANUFACTURING IS NOT RESPONSIBLE FOR TYPOGRAPHICAL ERRORS

| REVISION | | PART NAME: ASSEMBLY | | PRODUCT TYPE: Standard CF/YR | |
|-------------|-----------|---------------------|-----------|------------------------------|----------|
| REVISION BY | DATE | DRAWN BY | CHK'D BY | SALES | MATERIAL |
| C | HG | GJP | MD | NC | NOTED |
| DJB | 8/31/2023 | 11/16/1999 | 8/31/2023 | 8/31/2023 | 1 OF 2 |

CARTER MANUFACTURING CO., INC.
GRAND HAVEN, MICHIGAN 49417