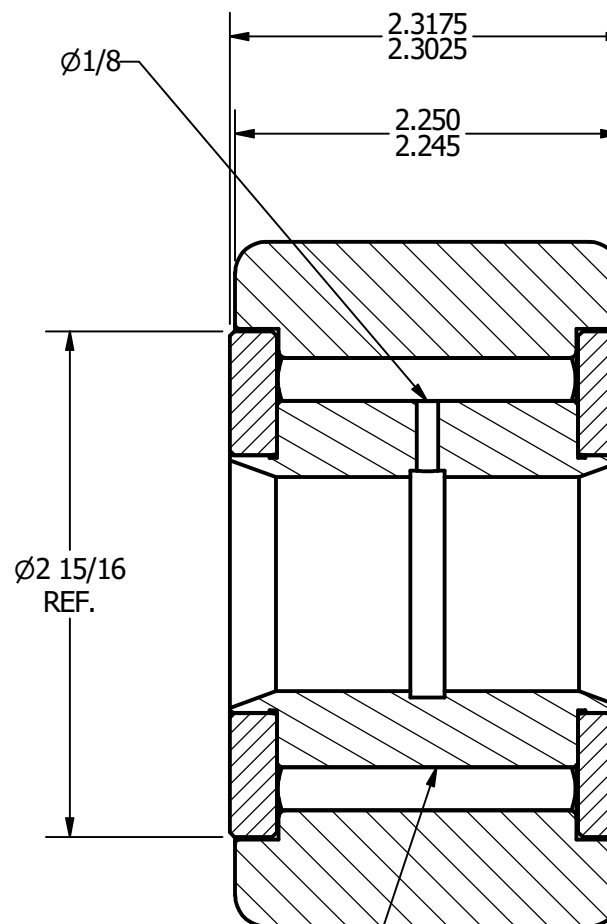


**1. BEARING IS PACKED WITH GREASE**  
**2. ALL EXPOSED SURFACES ARE BLACK OXIDED**



**MAXIMUM STATIC CAPACITY  
(POUNDS) 89,540**

**OUTER - BEARING STEEL, HEAT TREATED**  
**STUD - BEARING STEEL, ZONE HARDENED**  
**NEEDLE - BEARING STEEL, HEAT TREATED**  
**WASHER - COLD ROLLED STEEL, HEAT TREATED**

.XX =  $\pm .01$   
 .XXX =  $\pm .005$   
 .XXXX =  $\pm .0005$   
 ANGLES =  $\pm 1'$   
 INCH [METRIC]

CARTER MANUFACTURING IS  
NOT RESPONSIBLE FOR  
TYPOGRAPHICAL ERRORS

GRAND HAVEN, MICHIGAN 49417

REVISION

PART NAME: **ASSEMBLY**

SHEET 1 OF 2

A

***AUTHOR. BY***

***DRAWN BY***

CHK'D BY

***SALES*****MATERIAL**

REV. BY

DATE \_\_\_\_\_

DATE \_\_\_\_\_

DATE \_\_\_\_\_

DATE \_\_\_\_\_

DRAWING NO.

JAF

8/4/2006

8/4/2006

8/4/2006

8/3/2006

**YNB-128**