

LOAD RATINGS		
RATING	lbf	Newtons
RADIAL BASIC DYNAMIC	29,985	133,380
MAXIMUM STATIC CAPACITY	89,540	398,294

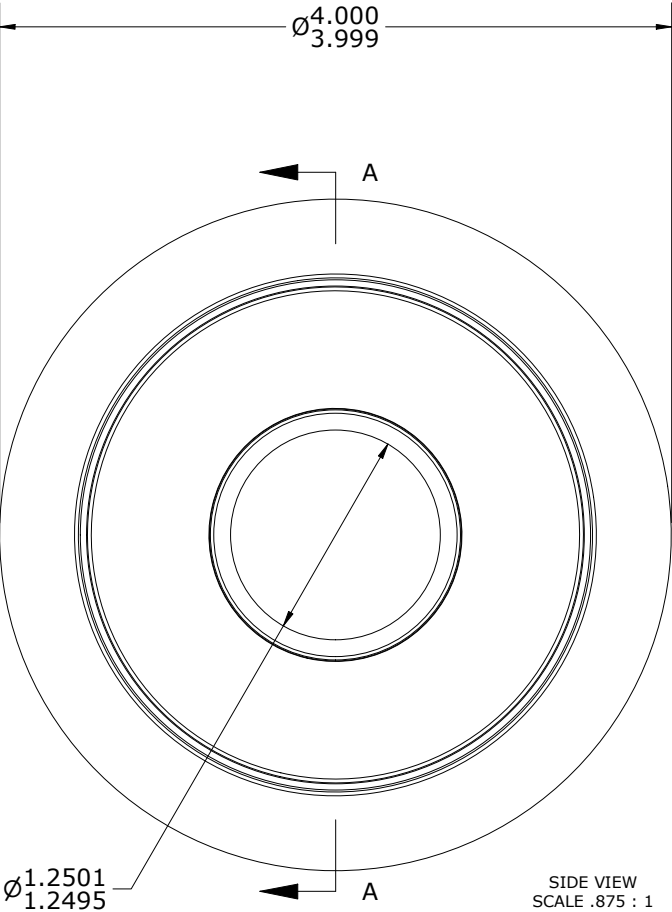
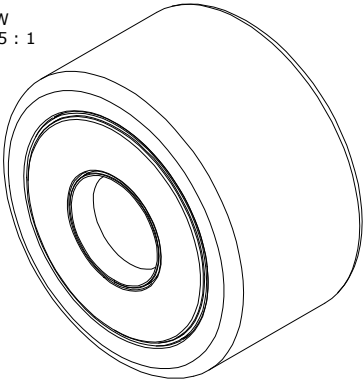
- NOTES:
1. BEARING IS PACKED WITH NLGI GRADE 2, LITHIUM BASED GREASE (UNLESS OTHERWISE SPECIFIED)
 2. ALL EXPOSED SURFACES AS MOUNTED HAVE BLACK OXIDE
 3. LIMITING SPEED:
A. GREASE = 700 RPM
 4. CUSTOM LASER ETCHING UPON REQUEST

DRAWING NO.

YNB-128-S

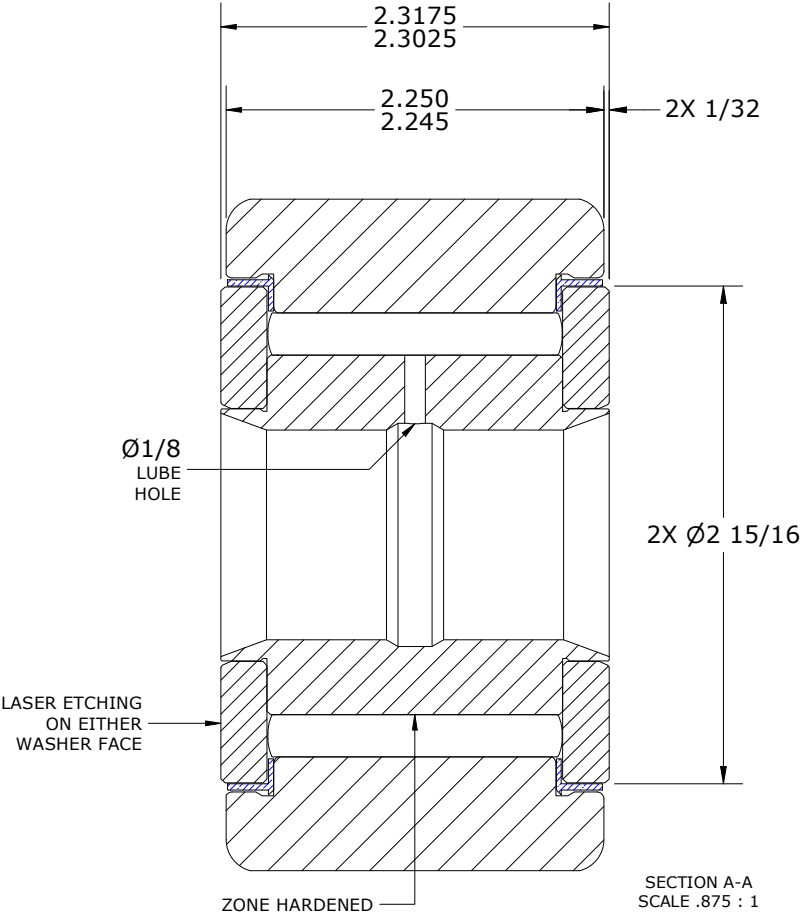
ISO VIEW

SCALE .4375 : 1



SIDE VIEW

SCALE .875 : 1



Recommended Shaft Fits		
Fit Type - Dimension	Ø (Inch)	Ø (mm)
Push - Max	1.2496	31.7398
Push - Min	1.2491	31.7271
Drive - Max	1.2504	31.7602
Drive - Min	1.2499	31.7475
Press - Max	1.2508	31.7703
Press - Min	1.2503	31.7576

MATERIAL NOTES: OUTER RING - BEARING STEEL, HEAT TREATED INNER RING - BEARING STEEL, ZONE HARDENED NEEDLE ROLLER(S) - BEARING STEEL, HEAT TREATED WASHER(S) - BEARING STEEL, HEAT TREATED SEAL(S) - SYNTHETIC	CUSTOMER PART#	XX = ± .01 XXX = ± .005 XXXX = ± .0005 ANGLES = ± 2' INCH [METRIC] FRACTION = ± 1/64	CARTER MANUFACTURING IS NOT RESPONSIBLE FOR TYPOGRAPHICAL ERRORS		CARTER MANUFACTURING CO., INC. GRAND HAVEN, MICHIGAN 49417			
	ENGINEERING CHANGE ORDER NOTE		REVISION		PART NAME: ASSEMBLY		PRODUCT TYPE: Standard CF/YR	
			B	AUTHOR BY HG	DRAWN BY GJP	CHK'D BY SGW	SALES NC	MATERIAL NOTED
	CARTER STANDARD SURFACE FINISH IS MEASURED IN "Ra" UNITS UNLESS OTHERWISE SPECIFIED.		REVISION BY DJB	DATE 9/1/2023	DATE 2/15/2000	DATE 9/1/2023	DATE 9/1/2023	SHEET 1 OF 2