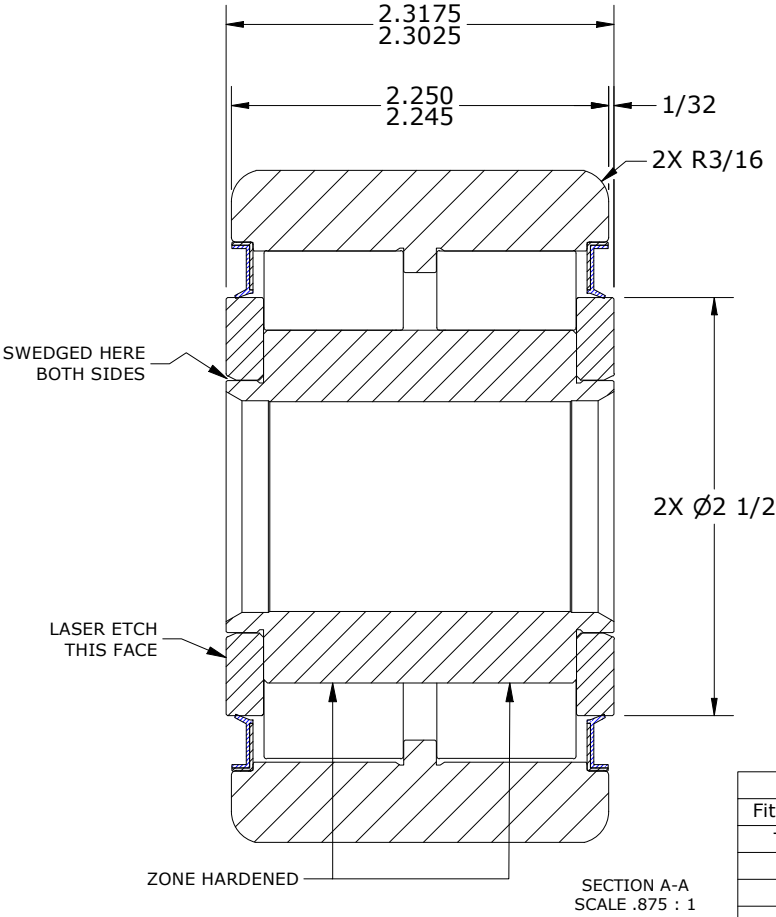
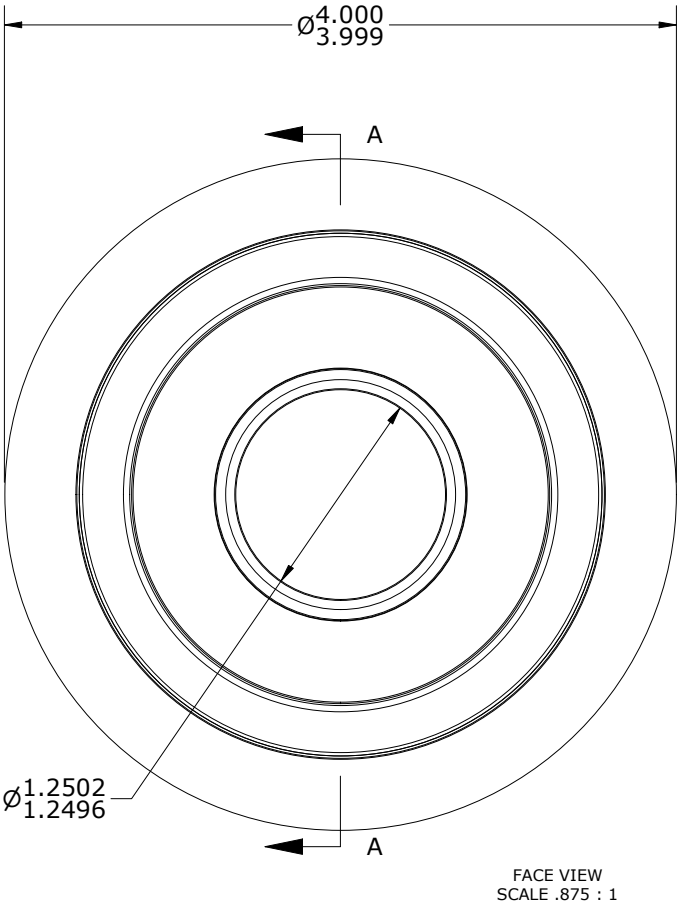
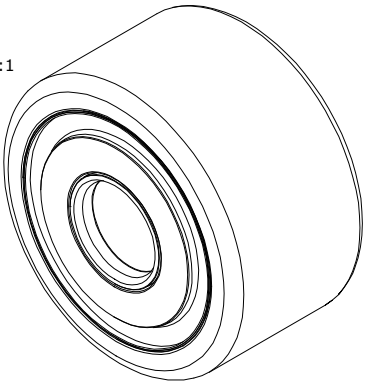


LOAD RATINGS		
RATING	lbf	Newtons
RADIAL BASIC DYNAMIC	45,600	202,839
MAXIMUM STATIC CAPACITY	68,000	302,479

- NOTES:
1. BEARING IS PACKED WITH NLGI GRADE 2, LITHIUM BASED GREASE (UNLESS OTHERWISE SPECIFIED)
  2. ALL EXPOSED SURFACES AS MOUNTED HAVE BLACK OXIDE
  3. LIMITING SPEED:  
A. GREASE = 2,600 RPM
  4. CUSTOM LASER ETCHING UPON REQUEST

MS NO.	NSN NO.	DRAWING NO.	YDR-400-S
--------	---------	-------------	-----------

ISO VIEW  
SCALE .438:1



Recommended Shaft Fits		
Fit Type - Dimension	$\varnothing$ (Inch)	$\varnothing$ (mm)
Transition - Max	1.2496	31.7398
Transition - Min	1.2491	31.7271
Press - Max	1.2508	31.7703
Press - Min	1.2503	31.7576

MATERIAL NOTES:

OUTER RING - BEARING STEEL, HEAT TREATED  
 INNER RING - BEARING STEEL, ZONE HARDENED  
 NEEDLE ROLLER(S) - BEARING STEEL, HEAT TREATED  
 WASHER(S) - STEEL, HEAT TREATED  
 SEAL(S) - VB TYPE GREASE SEAL

CUSTOMER PART#

XX =  $\pm .01$   
 XXX =  $\pm .005$   
 XXXX =  $\pm .0005$   
 ANGLES =  $\pm 1^\circ$   
 INCH [METRIC]  
 FRACTION =  $\pm 1/64$

CARTER MANUFACTURING IS  
 NOT RESPONSIBLE FOR  
 TYPOGRAPHICAL ERRORS

**CARTER MANUFACTURING CO., INC.**  
 GRAND HAVEN, MICHIGAN 49417

ENGINEERING CHANGE ORDER NOTE

REVISION

PART NAME: ASSEMBLY

PRODUCT TYPE: YDR

A

AUTHOR BY  
 HG

DRAWN BY  
 SGW

CHK'D BY  
 MD

SALES  
 NC

MATERIAL  
 NOTED

REVISION BY  
 SGW

DATE  
 4/27/2022

DATE  
 2/18/2022

DATE  
 4/27/2022

DATE  
 4/27/2022

SHEET  
 1 OF 2