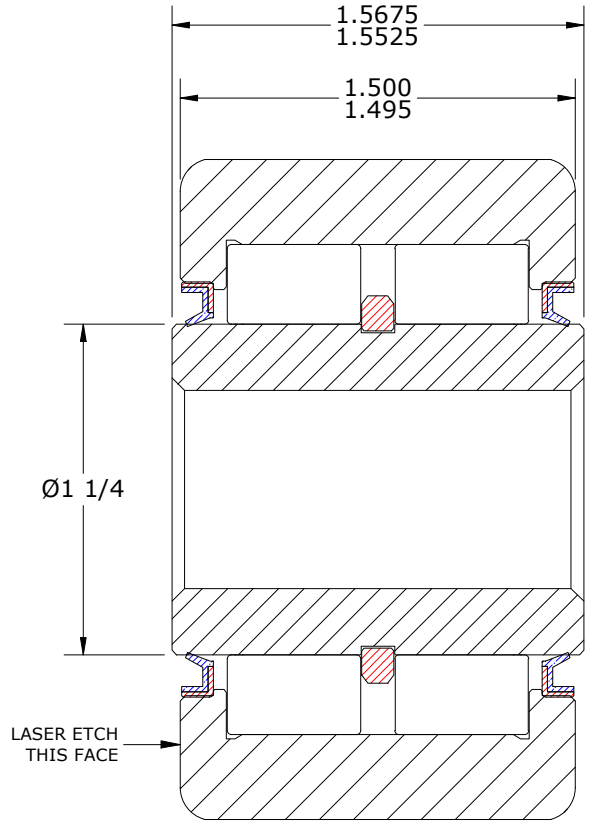
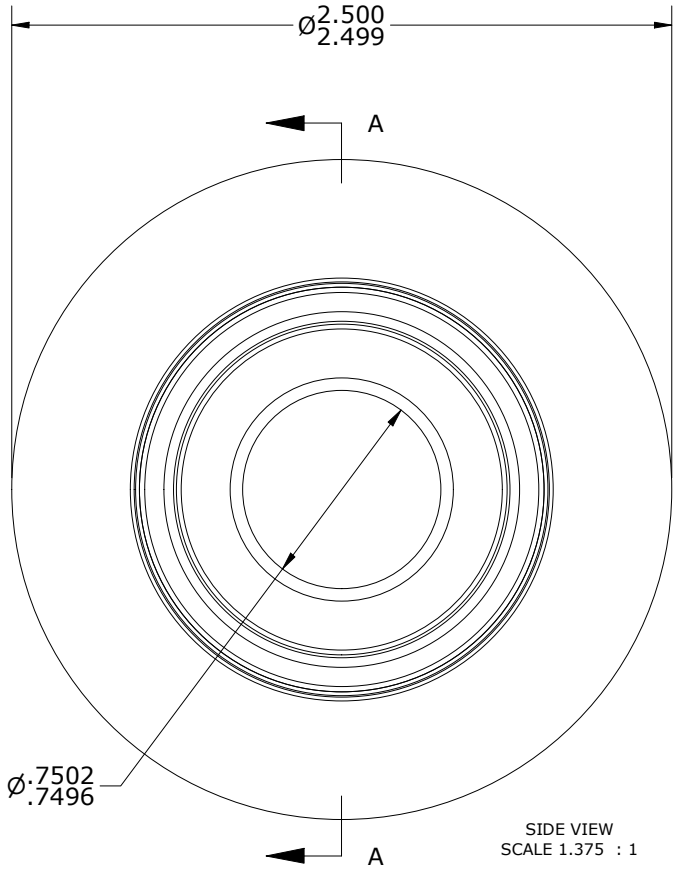
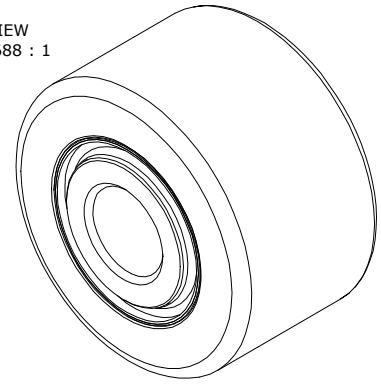


LOAD RATINGS		
RATING	lbf	Newtons
RADIAL BASIC DYNAMIC	16,800	74,730
MAXIMUM STATIC CAPACITY	22,800	101,419

- NOTES:
1. BEARING IS PACKED WITH NLGI GRADE 2, LITHIUM BASED GREASE (UNLESS OTHERWISE SPECIFIED)
 2. ALL EXPOSED SURFACES AS MOUNTED HAVE BLACK OXIDE
 3. LIMITING SPEED:
 - A. GREASE = 3,700 RPM
 4. CUSTOM LASER ETCHING UPON REQUEST

ISO VIEW
SCALE .688 : 1



Recommended Shaft Fits		
Fit Type - Dimension	Ø (Inch)	Ø (mm)
Transition - Max	.7497	19.0424
Transition - Min	.7493	19.0322
Press - Max	.7507	19.0678
Press - Min	.7503	19.0576

MATERIAL NOTES:

OUTER RING - BEARING STEEL, HEAT TREATED
 INNER RING - BEARING STEEL, HEAT TREATED
 NEEDLE ROLLER(S) - BEARING STEEL, HEAT TREATED
 RETAINING RING - BEARING STEEL, HEAT TREATED
 SEAL(S) - VB TYPE OIL SEAL

CUSTOMER PART#	XX = ± .01 XXX = ± .005 XXXX = ± .0005 ANGLES = ± 1' INCH [METRIC] FRACTION = ± 1/32
<i>ENGINEERING CHANGE ORDER NOTE</i>	

CARTER MANUFACTURING IS NOT RESPONSIBLE FOR TYPOGRAPHICAL ERRORS

REVISION	
A	AUTHOR BY HG
REVISION BY SGW	DATE 10/29/2021

CARTER MANUFACTURING CO., INC.
GRAND HAVEN, MICHIGAN 49417

PART NAME: ASSEMBLY				PRODUCT TYPE: YDR	
DRAWN BY SGW	CHK'D BY MD	SALES NC	MATERIAL NOTED		
DATE 10/28/2021	DATE 10/29/2021	DATE 11/1/2021	SHEET 1 OF 2		