

LOAD RATINGS		
RATING	lbf	Newtons
RADIAL BASIC DYNAMIC	12,400	55,158
MAXIMUM STATIC CAPACITY	17,200	76,509

- NOTES:
1. BEARING IS PACKED WITH NLGI GRADE 2, LITHIUM BASED GREASE (UNLESS OTHERWISE SPECIFIED)
  2. ALL EXPOSED SURFACES AS MOUNTED HAVE BLACK OXIDE
  3. LIMITING SPEED:  
A. GREASE = 4,100 RPM
  4. CUSTOM LASER ETCHING UPON REQUEST

**SIGNED DRAWING APPROVAL REQUIRED**

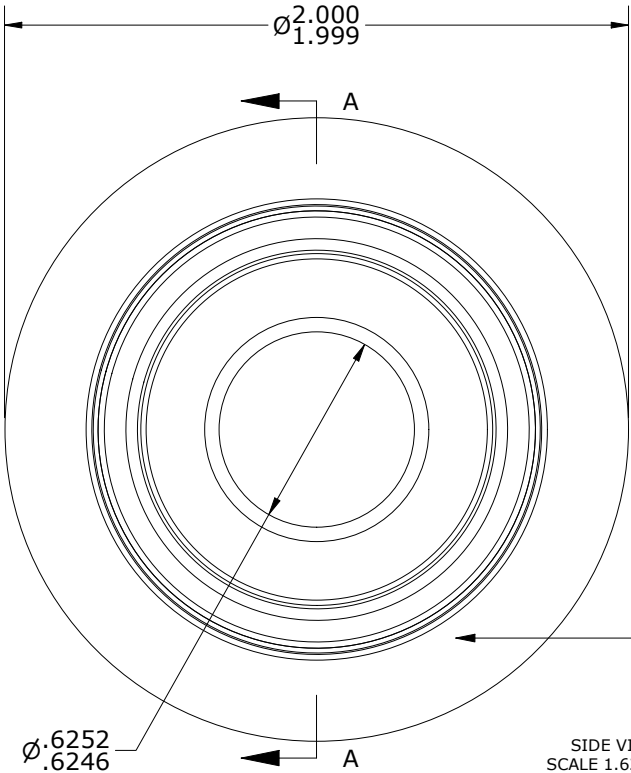
PLEASE REVIEW AND VERIFY INFORMATION ON ALL SHEETS & RETURN COPY WITH SIGNED AND DATED APPROVAL, AND/OR REQUIRED CHANGES. CARTER WILL NOT PROCEED WITH ORDER UNTIL APPROVAL IS RECEIVED

SIGNED \_\_\_\_\_

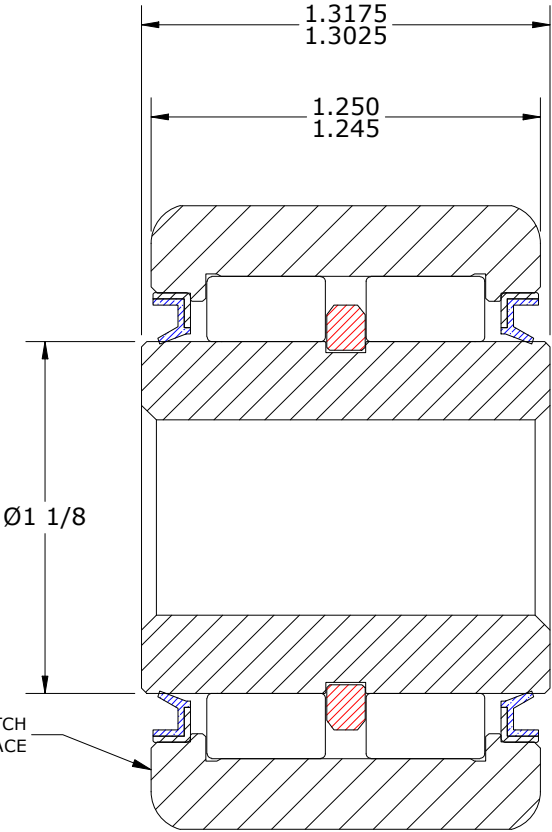
DATE \_\_\_\_\_

APPROVED ☐

REJECTED ☐

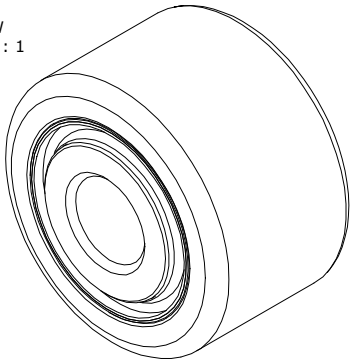


SIDE VIEW  
SCALE 1.625 : 1



SECTION A-A  
SCALE 1.625 : 1

ISO VIEW  
SCALE .813 : 1



Recommended Shaft Fits		
Fit Type - Dimension	Ø (Inch)	Ø (mm)
Transition - Max	.6247	15.8674
Transition - Min	.6243	15.8572
Press - Max	.6257	15.8928
Press - Min	.6253	15.8826

**MATERIAL NOTES:**

OUTER RING - BEARING STEEL, HEAT TREATED  
INNER RING - BEARING STEEL, HEAT TREATED  
NEEDLE ROLLER(S) - BEARING STEEL, HEAT TREATED  
RETAINING RING - BEARING STEEL, HEAT TREATED  
SEAL(S) - VB TYPE OIL SEAL

CUSTOMER PART#

XX = ± .01  
XXX = ± .005  
XXXX = ± .0005  
ANGLES = ± 1'  
INCH (METRIC)  
FRACTION = ± 1/32

CARTER MANUFACTURING IS NOT RESPONSIBLE FOR TYPOGRAPHICAL ERRORS

**CARTER MANUFACTURING CO., INC.**  
GRAND HAVEN, MICHIGAN 49417

**ENGINEERING CHANGE ORDER NOTE**

REVISION

PART NAME: ASSEMBLY

PRODUCT TYPE: YDR

A

AUTHOR BY  
HG

DRAWN BY  
SGW

CHK'D BY  
MD

SALES  
SC

MATERIAL  
NOTED

REVISION BY  
SGW

DATE  
2/21/2020

DATE  
2/14/2020

DATE  
2/17/2020

DATE  
2/21/2020

SHEET  
1 OF 2