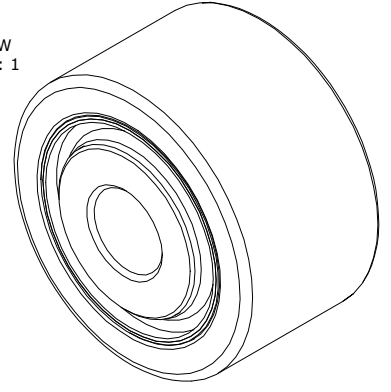


LOAD RATINGS		
RATING	lbf	Newtons
RADIAL BASIC DYNAMIC	8,200	36,475
MAXIMUM STATIC CAPACITY	10,500	46,706

MS NO. \_\_\_\_\_ NSN NO. \_\_\_\_\_ DRAWING NO. YDR-175-S

- NOTES:
1. BEARING IS PACKED WITH NLGI GRADE 2, LITHIUM BASED GREASE (UNLESS OTHERWISE SPECIFIED)
  2. ALL EXPOSED SURFACES AS MOUNTED HAVE BLACK OXIDE
  3. LIMITING SPEED:  
A. GREASE = 4,700 RPM
  4. CUSTOM LASER ETCHING UPON REQUEST

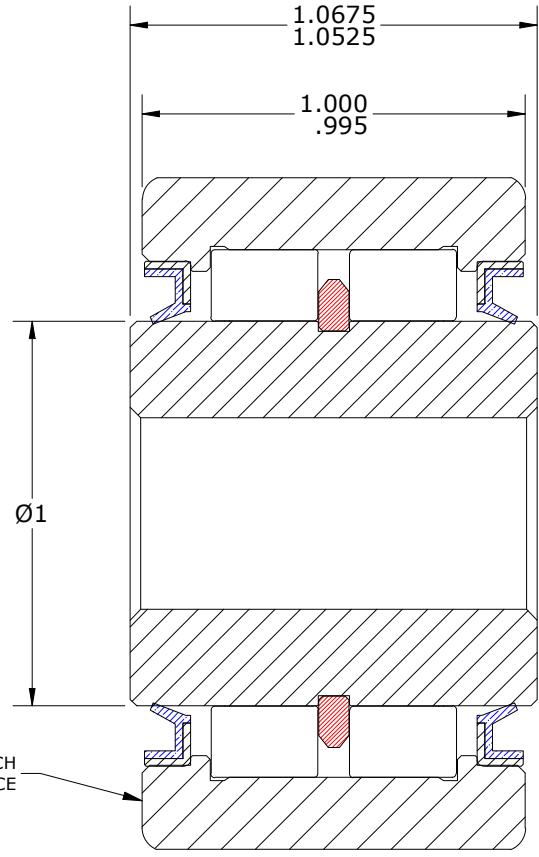
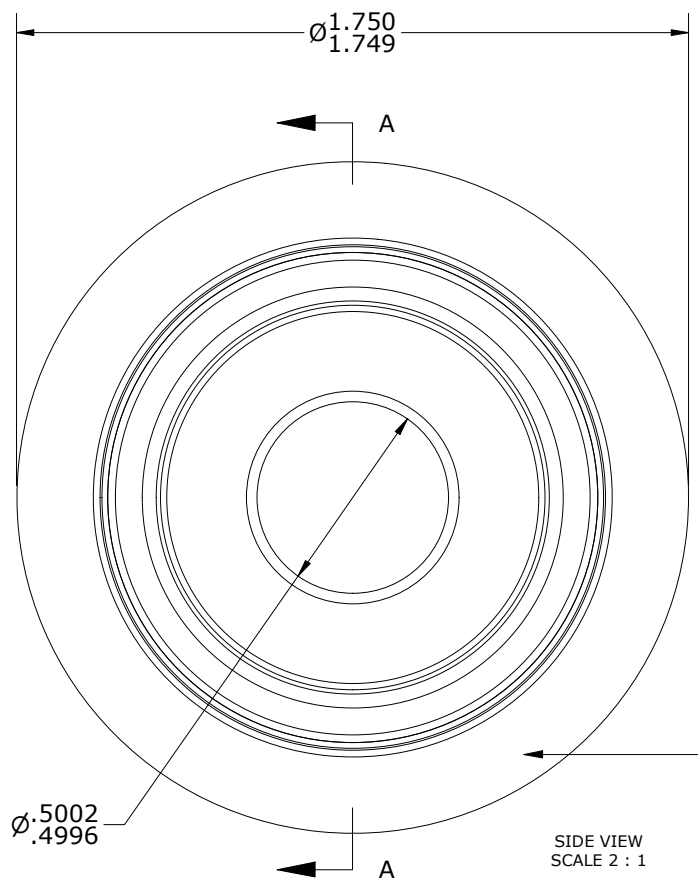
ISO VIEW  
SCALE 1 : 1



**SIGNED DRAWING APPROVAL REQUIRED**

PLEASE REVIEW AND VERIFY INFORMATION ON ALL SHEETS & RETURN COPY WITH SIGNED AND DATED APPROVAL, AND/OR REQUIRED CHANGES. CARTER WILL NOT PROCEED WITH ORDER UNTIL APPROVAL IS RECEIVED

\_\_\_\_\_  
SIGNED                      DATE                      APPROVED                       REJECTED



LASER ETCH THIS FACE

Recommended Shaft Fits		
Fit Type - Dimension	Ø (Inch)	Ø (mm)
Transition - Max	.4997	12.6924
Transition - Min	.4993	12.6822
Press - Max	.5007	12.7178
Press - Min	.5003	12.7076

MATERIAL NOTES:

OUTER RING - BEARING STEEL, HEAT TREATED  
 INNER RING - BEARING STEEL, HEAT TREATED  
 NEEDLE ROLLER(S) - BEARING STEEL, HEAT TREATED  
 RETAINING RING - BEARING STEEL, HEAT TREATED  
 SEAL(S) - VB TYPE OIL SEAL

CUSTOMER PART# \_\_\_\_\_  
 XX = ± .01  
 XXX = ± .005  
 XXXX = ± .0005  
 ANGLES = ± 1'  
 INCH [METRIC]  
 FRACTION = ± 1/32

**ENGINEERING CHANGE ORDER NOTE**

CARTER MANUFACTURING IS NOT RESPONSIBLE FOR TYPOGRAPHICAL ERRORS

**CARTER MANUFACTURING CO., INC.**  
 GRAND HAVEN, MICHIGAN 49417

REVISION		PART NAME: ASSEMBLY		PRODUCT TYPE: YDR	
A	AUTHOR BY	DRAWN BY	CHK'D BY	SALES	MATERIAL
REVISION BY	DATE	DATE	DATE	DATE	SHEET
SGW	2/6/2020	2/4/2020	2/6/2020	2/6/2020	1 OF 2