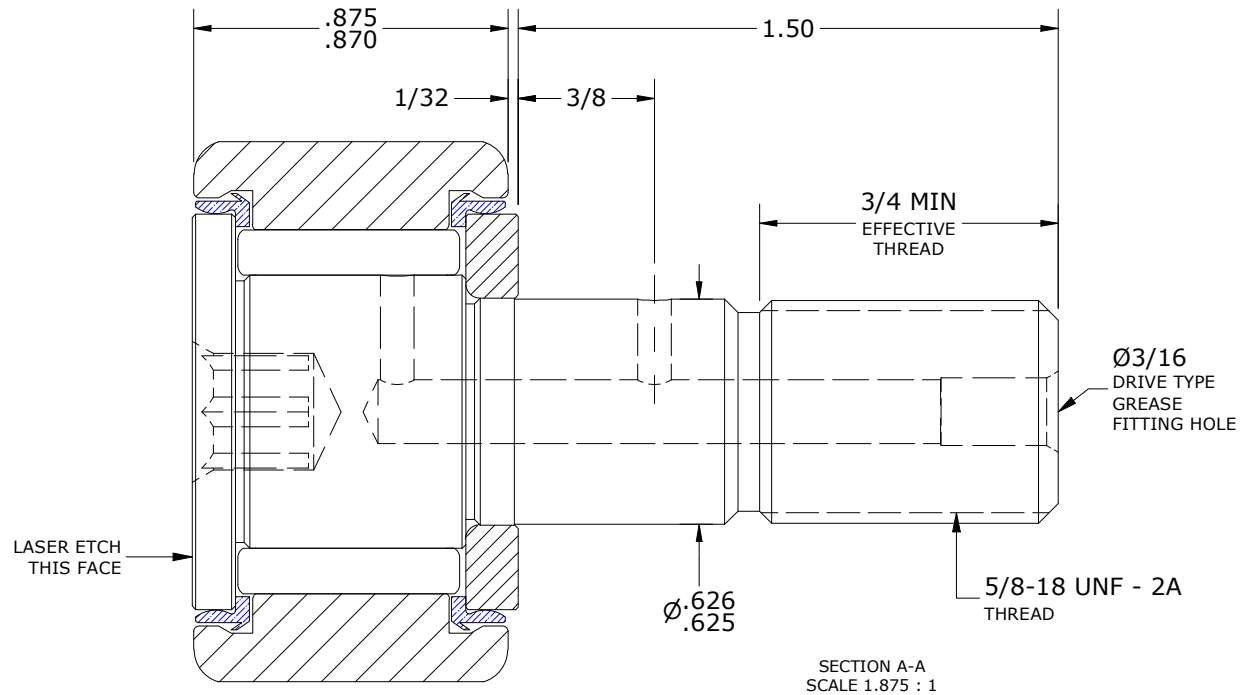
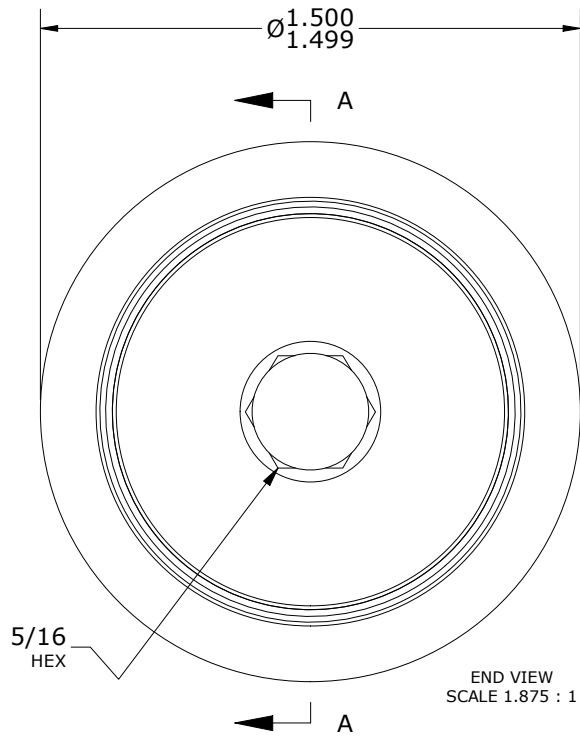
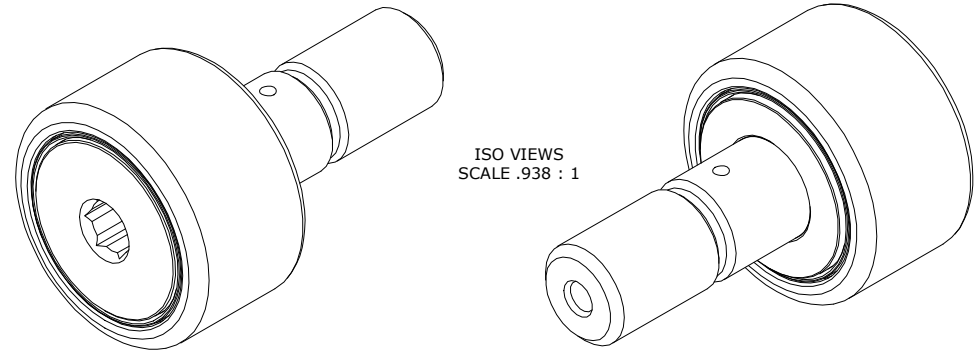


LOAD RATINGS		
RATING	lbf	Newtons
RADIAL BASIC DYNAMIC	4,840	21,529
MAXIMUM STATIC CAPACITY	5,640	25,088

RECOMMENDED MOUNTING HOLE Ø		
Limit	Inch	mm
MIN	.6250	15.875
MAX	.6255	15.888

MAXIMUM CLAMPING TORQUE**		
Thread Type	Inch Lbs	Nm
LUBRICATED	325	36.5

- NOTES:
- BEARING IS PACKED WITH NLGI GRADE 2, H1, FOOD GREASE (UNLESS OTHERWISE SPECIFIED)
  - CUSTOM LASER ETCHING IS AVAILABLE UPON REQUEST
  - LIMITING SPEED:  
A. GREASE = 2,500 RPM



\*\*TORQUE SPECIFICATION IS BASED ON LUBRICATED THREADS, IF USING DRY THREADS DOUBLE TORQUE VALUE

MATERIAL NOTES:  
 OUTER RING - XD15NW, STAINLESS STEEL, HEAT TREATED  
 STUD - XD15NW, STAINLESS STEEL, ZONE HARDENED  
 WASHER - XD15NW, STAINLESS STEEL, HEAT TREATED  
 NEEDLE ROLLER(S) - XD15NW STAINLESS STEEL, HEAT TREATED  
 SEAL(S) - SYNTHETIC

CUSTOMER PART#  
 XX = ± .01  
 XXX = ± .005  
 XXXX = ± .0005  
 ANGLES = ± 1'  
 INCH [METRIC]  
 FRACTION = ± 1/32

CARTER MANUFACTURING IS NOT RESPONSIBLE FOR TYPOGRAPHICAL ERRORS

**CARTER MANUFACTURING CO., INC.**  
 GRAND HAVEN, MICHIGAN 49417

ENGINEERING CHANGE ORDER NOTE

REVISION		PART NAME: ASSEMBLY			PRODUCT TYPE: XD	
<b>A</b>	AUTHOR BY HG	DRAWN BY SGW	CHK'D BY MD	SALES KR	MATERIAL NOTED	
REVISION BY SGW	DATE 3/23/2018	DATE 7/7/2016	DATE 3/13/2018	DATE 4/2/2018	SHEET 1 OF 2	