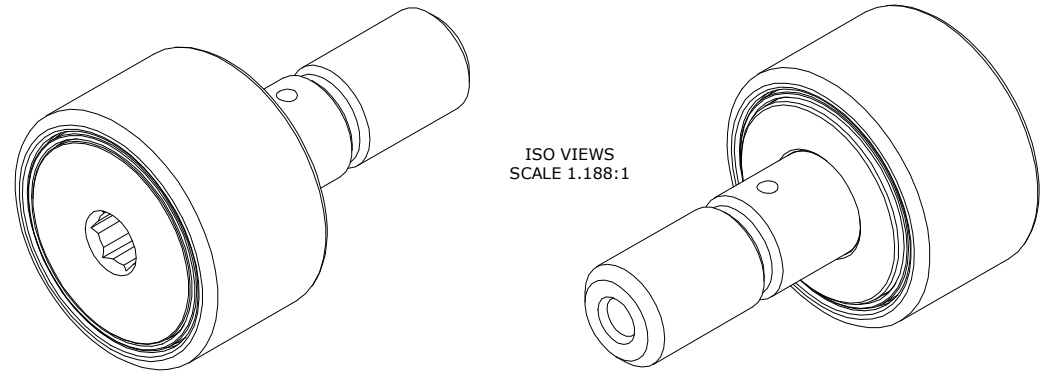


LOAD RATINGS		
RATING	lbf	Newtons
RADIAL BASIC DYNAMIC	3,930	17,481
MAXIMUM STATIC CAPACITY	4,250	18,904

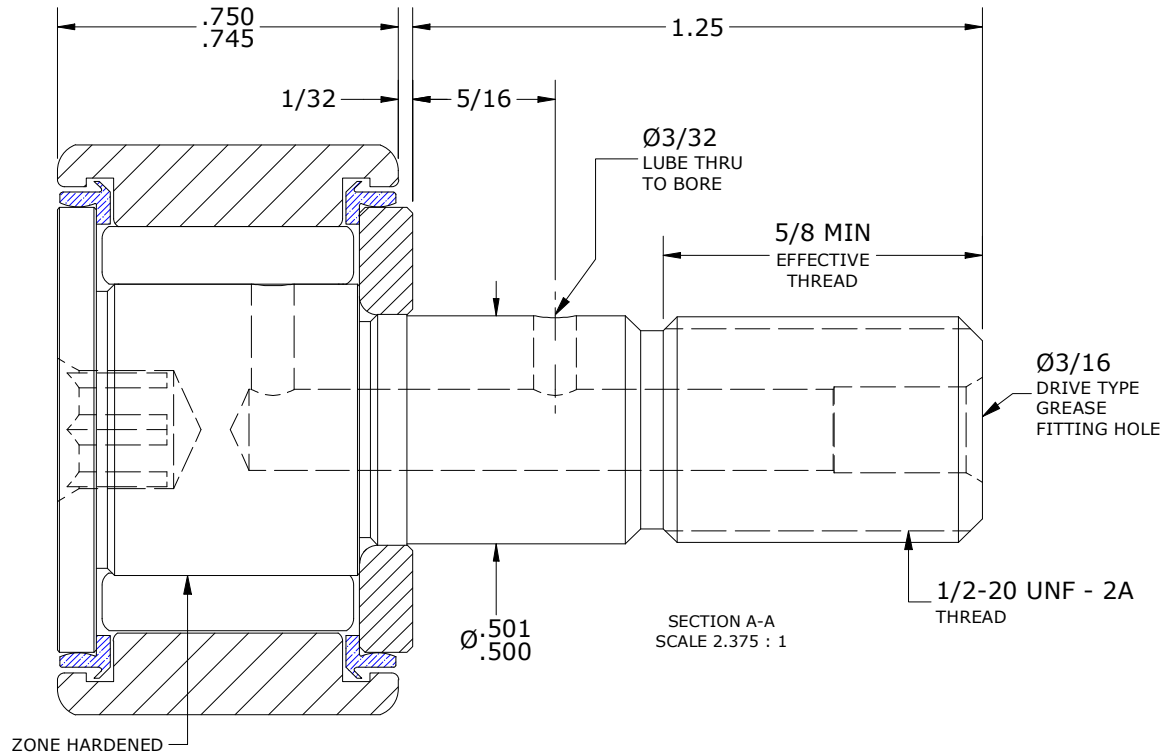
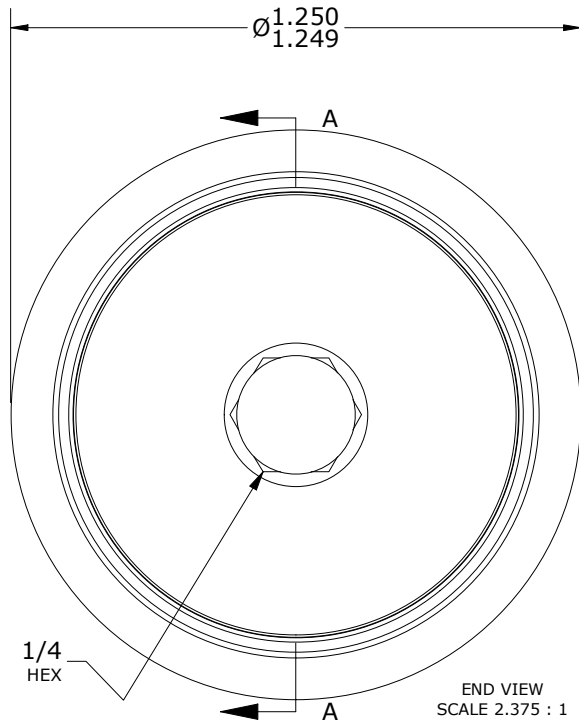
MS NO. \_\_\_\_\_ NSN NO. \_\_\_\_\_ DRAWING NO. **XD-40-SB**

RECOMMENDED MOUNTING HOLE Ø		
Limit	Inch	mm
MIN	.5000	12.7000
MAX	.5005	12.7076

- NOTES:
- BEARING IS PACKED WITH NLGI GRADE 2, H1, FOOD GREASE (UNLESS OTHERWISE SPECIFIED)
  - CUSTOM LASER ETCHING IS AVAILABLE UPON REQUEST
  - LIMITING SPEED:
    - A. GREASE = 3,100 RPM



MAXIMUM CLAMPING TORQUE**		
Thread Type	Inch Lbs	Nm
LUBRICATED	175	20



\*\*TORQUE SPECIFICATION IS BASED ON LUBRICATED THREADS, IF USING DRY THREADS DOUBLE TORQUE VALUE

**MATERIAL NOTES:**

- OUTER RING - XD15NW, STAINLESS STEEL, HEAT TREATED
- STUD - XD15NW, STAINLESS STEEL, ZONE HARDENED
- WASHER - XD15NW, STAINLESS STEEL, HEAT TREATED
- NEEDLE ROLLER(S) - XD15NW STAINLESS STEEL, HEAT TREATED
- SEAL(S) - SYNTHETIC

CUSTOMER PART# \_\_\_\_\_  
 XX = ± .01  
 XXX = ± .005  
 XXXX = ± .0005  
 ANGLES = ± 1'  
 INCH [METRIC]  
 FRACTION = ± 1/32

CARTER MANUFACTURING IS NOT RESPONSIBLE FOR TYPOGRAPHICAL ERRORS

**CARTER MANUFACTURING CO., INC.**  
 GRAND HAVEN, MICHIGAN 49417

REVISION		PART NAME: ASSEMBLY		PRODUCT TYPE: XD	
<b>A</b>	AUTHOR BY HG	DRAWN BY SGW	CHK'D BY MD	SALES KR	MATERIAL NOTED
REVISION BY SGW	DATE 5/22/2018	DATE 4/5/2018	DATE 5/17/2018	DATE 5/17/2018	SHEET 1 OF 2