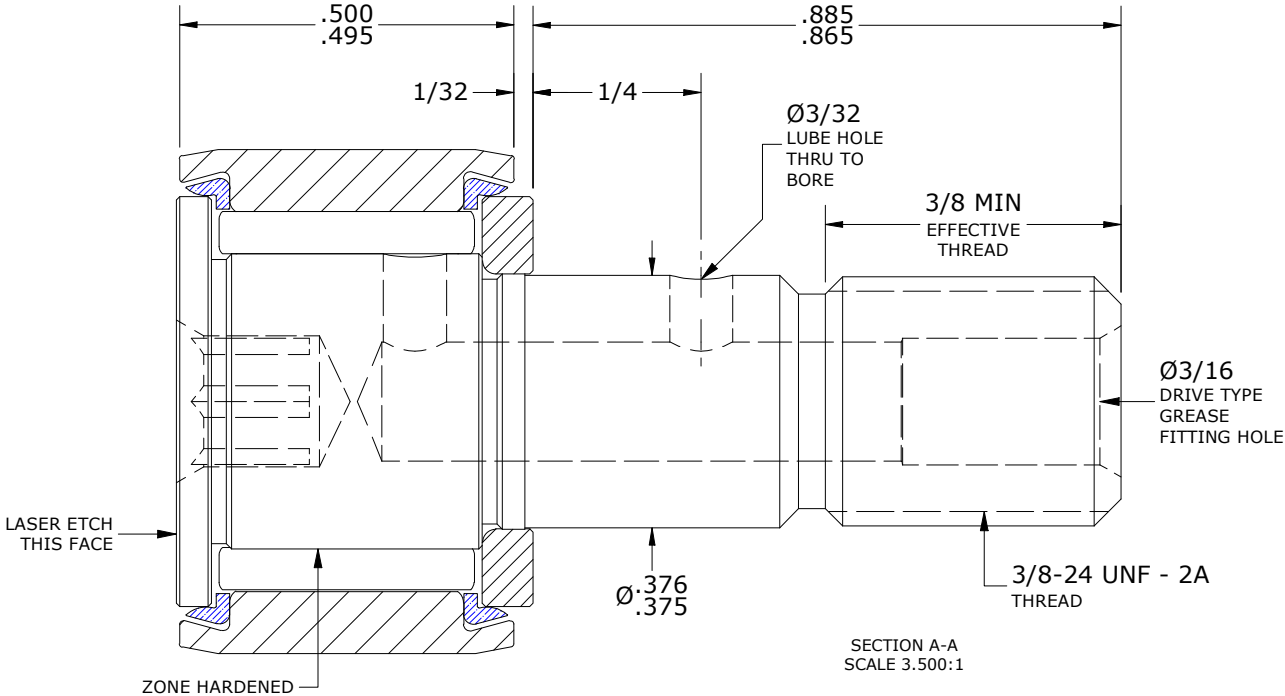
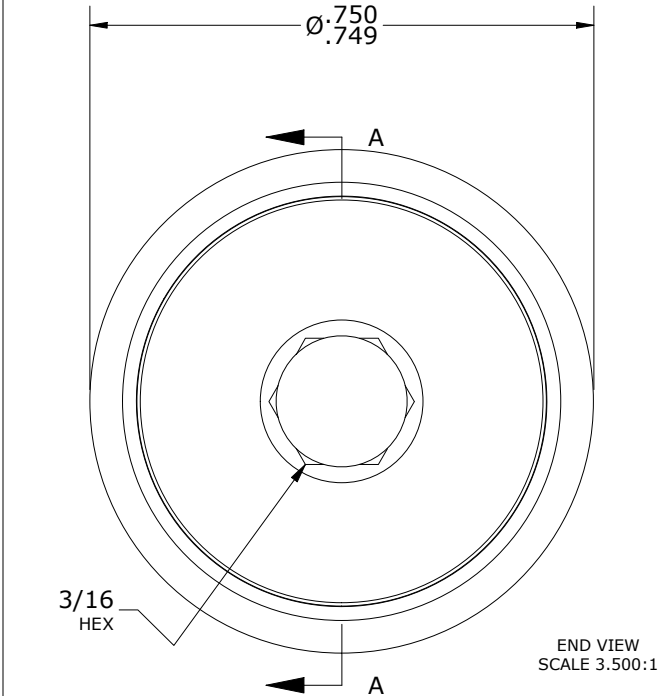
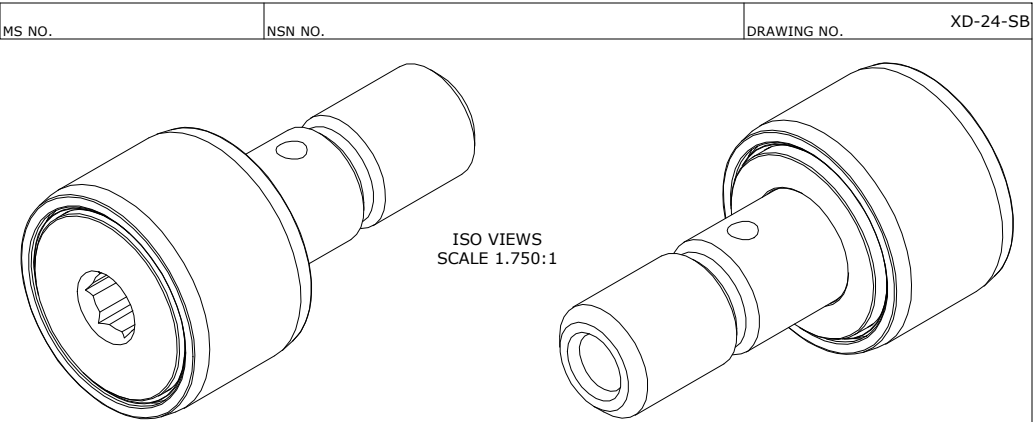


LOAD RATINGS		
RATING	lbf	Newtons
RADIAL BASIC DYNAMIC	1,490	6,628
MAXIMUM STATIC CAPACITY	1,500	6,672

RECOMMENDED MOUNTING HOLE Ø		
Limit	Inch	mm
MIN	.3750	9.5250
MAX	.3755	9.5377

MAXIMUM CLAMPING TORQUE**		
Thread Type	Inch Lbs	Nm
LUBRICATED	47.5	5.5

- NOTES:
1. BEARING COMES PACKED WITH CARTER STANDARD FOOD GRADE H1, NLGI 2 GREASE (UNLESS OTHER WISE SPECIFIED)
 2. CUSTOM LASER ETCHING AVAILABLE UPON REQUEST
 3. LIMITING SPEED:
A. GREASE = 6,400 RPM



**TORQUE SPECIFICATION IS BASED ON LUBRICATED THREADS, IF USING DRY THREADS DOUBLE TORQUE VALUE

MATERIAL NOTES: OUTER RING - XD15NW, STAINLESS STEEL, HEAT TREATED STUD - XD15NW, STAINLESS STEEL, ZONE HARDENED WASHER - XD15NW, STAINLESS STEEL, HEAT TREATED NEEDLE ROLLER(S) - XD15NW STAINLESS STEEL, HEAT TREATED SEAL(S) - SYNTHETIC	CUSTOMER PART#	XX = ± .01 XXX = ± .005 XXXX = ± .0005 ANGLES = ± 1' INCH [METRIC] FRACTION = ± 1/32	CARTER MANUFACTURING IS NOT RESPONSIBLE FOR TYPOGRAPHICAL ERRORS		CARTER MANUFACTURING CO., INC. GRAND HAVEN, MICHIGAN 49417					
	ENGINEERING CHANGE ORDER NOTE		REVISION		PART NAME: ASSEMBLY			PRODUCT TYPE: XD		
			B	AUTHOR BY HG	DRAWN BY SGW	CHK'D BY MD	SALES NC	MATERIAL NOTED		
			REVISION BY SGW	DATE 6/23/2020	DATE 2/19/2018	DATE 6/22/2020	DATE 6/23/2020	SHEET 1 OF 2		