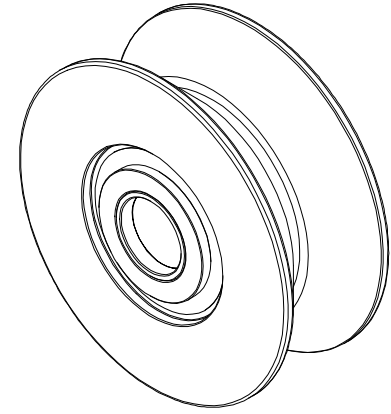
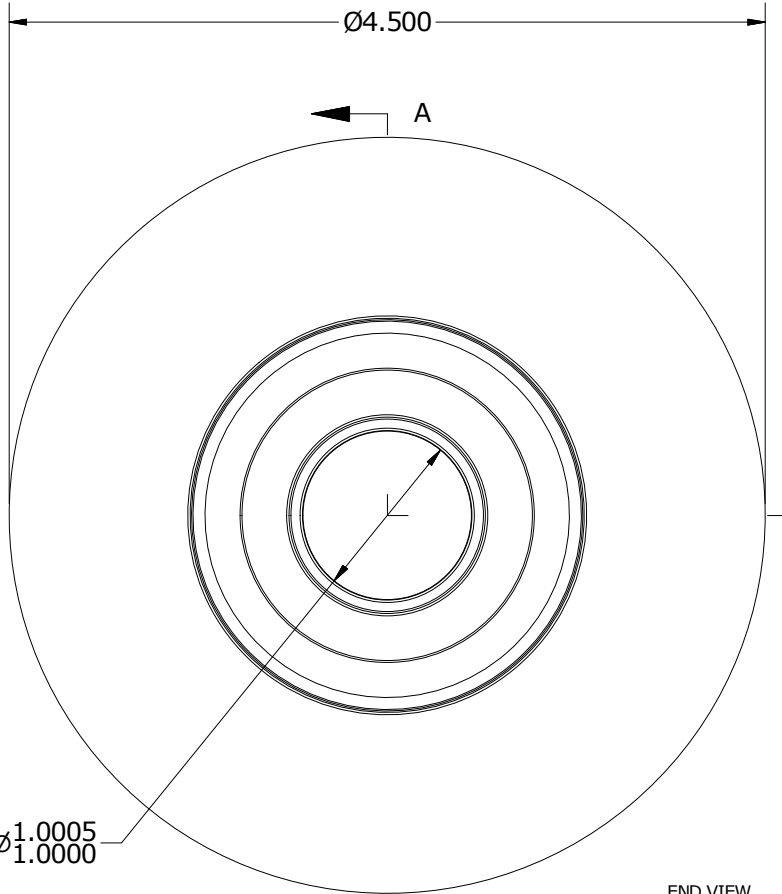


LOAD RATINGS	
RATING	Lbs
RADIAL BASIC DYNAMIC [C]	14,200
DYNAMIC THRUST LOAD	12,000
MAXIMUM STATIC CAPACITY [Co]	20,000

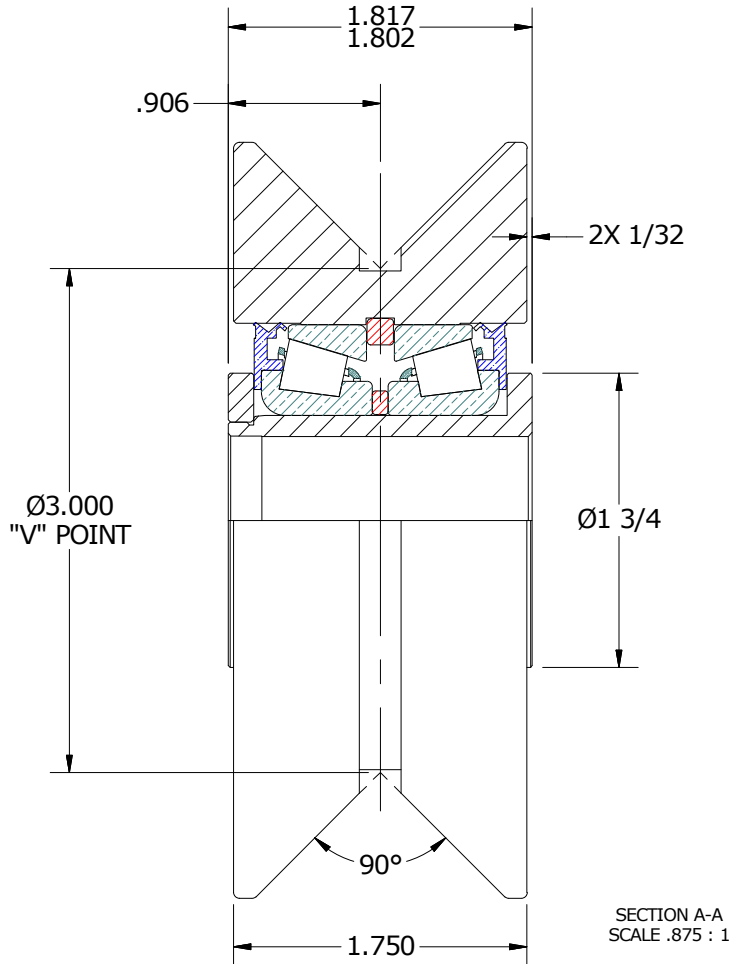
- NOTES:
 1. BEARING IS PACKED WITH NLGI GRADE 2, LITHIUM BASED GREASE
 2. YOKE & WASHER: ALL EXPOSED SURFACES HAVE BLACK OXIDE



ISO VIEW
SCALE .438 : 1



END VIEW
SCALE .875 : 1



SECTION A-A
SCALE .875 : 1

MATERIAL NOTES:
 OUTER ROLLER - BEARING STEEL, HEAT TREATED
 YOKE - COLD ROLLED STEEL
 BEARING ASSY - LM67000LA-902A2
 WASHER - COLD ROLLED STEEL

CUSTOMER PART# _____
 XX = ± .01
 XXX = ± .005
 XXXX = ± .0005
 ANGLES = ± 1'
 INCH [METRIC]
 FRACTION = ± 1/32

CARTER MANUFACTURING IS NOT RESPONSIBLE FOR TYPOGRAPHICAL ERRORS

CARTER MANUFACTURING CO., INC.
 GRAND HAVEN, MICHIGAN 49417

ENGINEERING CHANGE ORDER NOTE	

REVISION		PART NAME: ASSEMBLY			
C	AUTHOR BY DB	DRAWN BY SGW	CHK'D BY SGW	SALES KR	MATERIAL NOTED
	REVISION BY MD	DATE 11/25/2013	DATE 3/2/2011	DATE 11/25/2013	DATE 3/2/2011
				SHEET 1 OF 2	