

LOAD RATINGS	
RATING	Lbs
RADIAL BASIC DYNAMIC [C]	10,880
STATIC THRUST LOAD	4,570
MAXIMUM STATIC CAPACITY [Co]	7,630

NOTES:

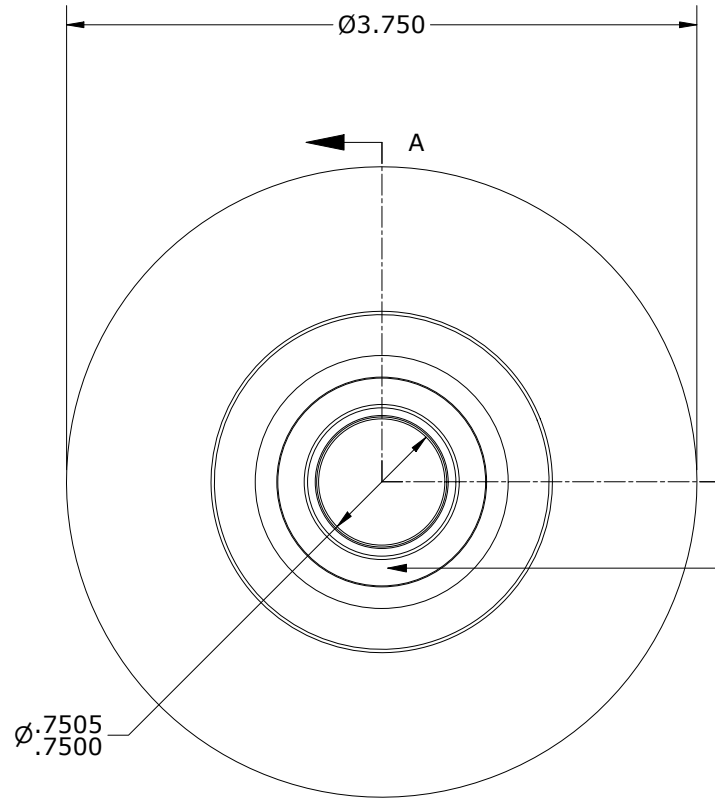
1. BEARING IS PACKED WITH NLGI GRADE 2, LITHIUM BASED GREASE UNLESS OTHERWISE SPECIFIED
2. ALL EXPOSED SURFACES HAVE BLACK OXIDE
3. CUSTOM LASER ETCHING AVAILABLE UPON REQUEST

MS NO.

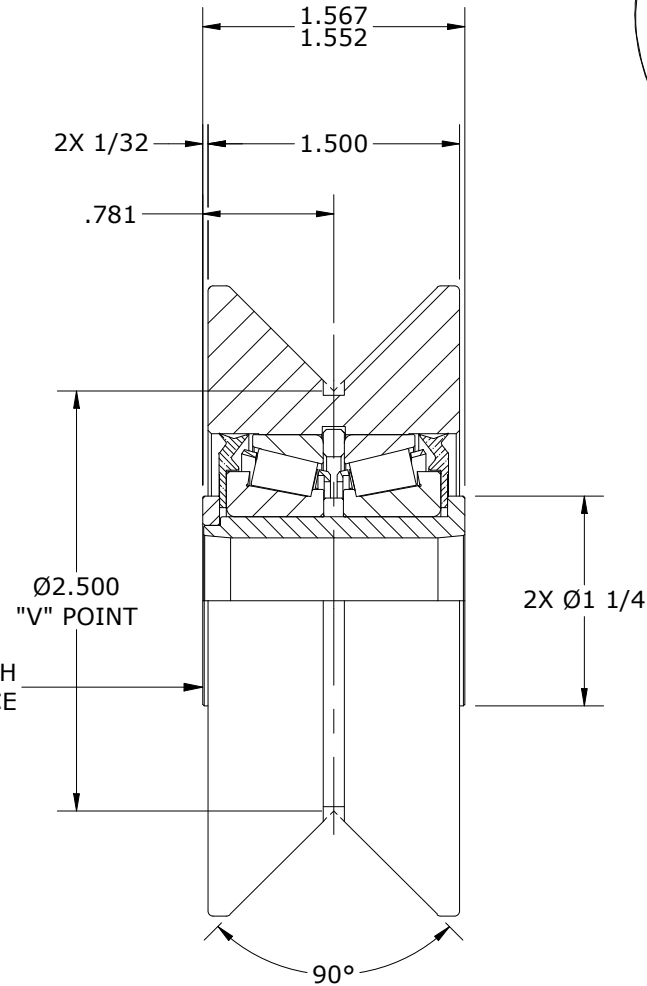
NSN NO.

DRAWING NO.

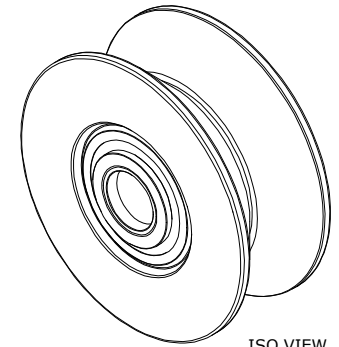
VHRY-375-A



END VIEW  
SCALE .875 : 1



SECTION A-A  
SCALE .875 : 1



ISO VIEW  
SCALE .4375 : 1

MATERIAL NOTES:

- OUTER ROLLER - BEARING STEEL, HEAT TREATED
- YOKE - STEEL
- WASHER - STEEL
- BEARING ASSEMBLY - L44600LA-902A7

CUSTOMER PART#

XX = ± .01  
XXX = ± .005  
XXXX = ± .0005  
ANGLES = ± 1'  
INCH [METRIC]  
FRACTION = ± 1/32

CARTER MANUFACTURING IS NOT RESPONSIBLE FOR TYPOGRAPHICAL ERRORS

**CARTER MANUFACTURING CO., INC.**

GRAND HAVEN, MICHIGAN 49417

ENGINEERING CHANGE ORDER NOTE

REVISION

PART NAME: VHRY-375 ASSEMBLY

PRODUCT TYPE: VHRY

D

AUTHOR BY

DRAWN BY

CHK'D BY

SALES

MATERIAL

DATE

DATE

DATE

DATE

SHEET

MD

1/3/2020

6/26/2001

1/3/2020

3/2/2011

1 OF 2