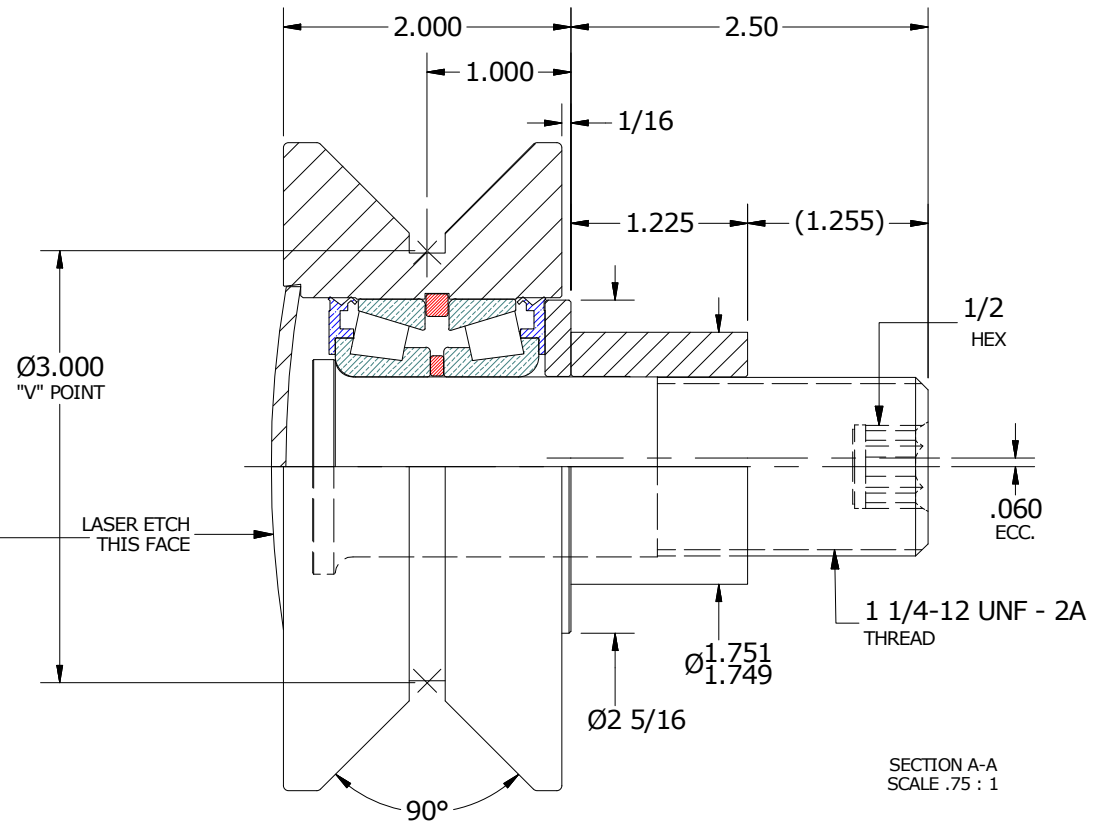
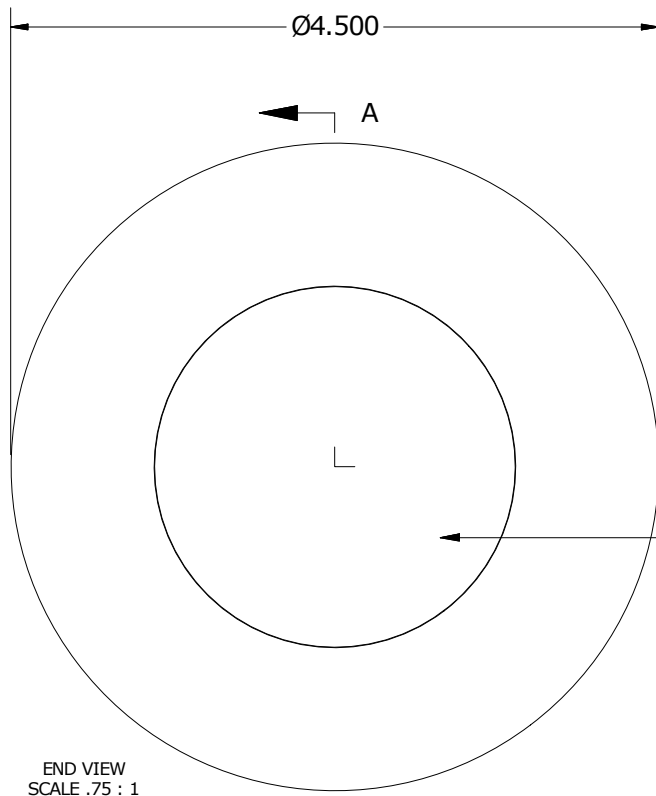
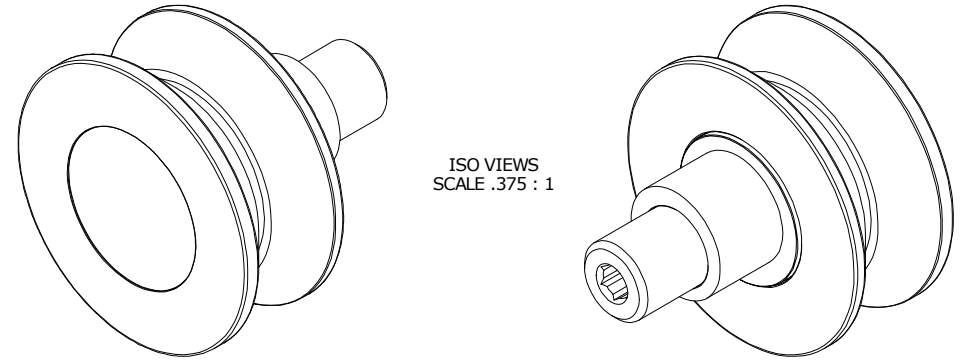


| LOAD RATINGS | |
|-------------------------|--------|
| RATING | Lbs |
| RADIAL BASIC DYNAMIC | 14,270 |
| STATIC THRUST LOAD | 12,000 |
| MAXIMUM STATIC CAPACITY | 20,000 |

- NOTES:
1. BEARING IS PACKED WITH NLGI GRADE 2, LITHIUM BASED GREASE (UNLESS OTHERWISE SPECIFIED)
 2. ALL EXPOSED SURFACES HAVE BLACK OXIDE
 3. CUSTOM LASER ETCHING IS AVAILABLE UPON REQUEST

| | | | |
|--------|---------|-------------|------------|
| MS NO. | NSN NO. | DRAWING NO. | VHRE-450-A |
|--------|---------|-------------|------------|



MATERIAL NOTES:

- OUTER ROLLER - BEARING STEEL, HEAT TREATED
- STUD - STEEL
- BEARING ASSEMBLY - LM67000LA-902A2
- WASHER - STEEL
- END CAP - STEEL
- ECCENTRIC SLEEVE - STEEL

CUSTOMER PART#

XX = ± .01
XXX = ± .005
XXXX = ± .0005
ANGLES = ± 1'
INCH [METRIC]
FRACTION = ± 1/32

CARTER MANUFACTURING IS NOT RESPONSIBLE FOR TYPOGRAPHICAL ERRORS

CARTER MANUFACTURING CO., INC.

GRAND HAVEN, MICHIGAN 49417

ENGINEERING CHANGE ORDER NOTE

REVISION

PART NAME: ASSEMBLY

PRODUCT TYPE: VHRE

B

AUTHOR BY
HG

DRAWN BY
SGW

CHK'D BY
SGW

SALES
KPR

MATERIAL
NOTED

REVISION BY
MD

DATE
3/6/2017

DATE
8/6/2008

DATE
3/6/2017

DATE
8/5/2008

SHEET
1 OF 2