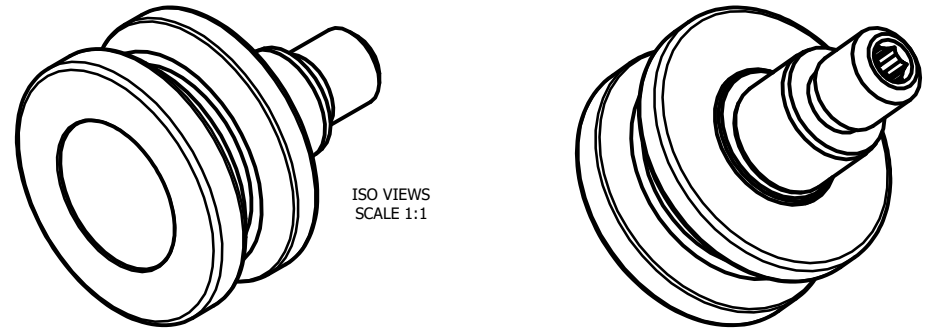
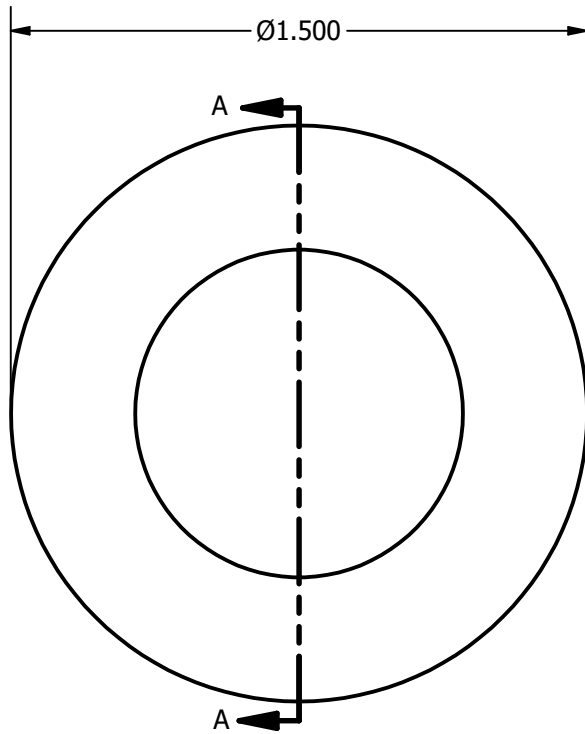


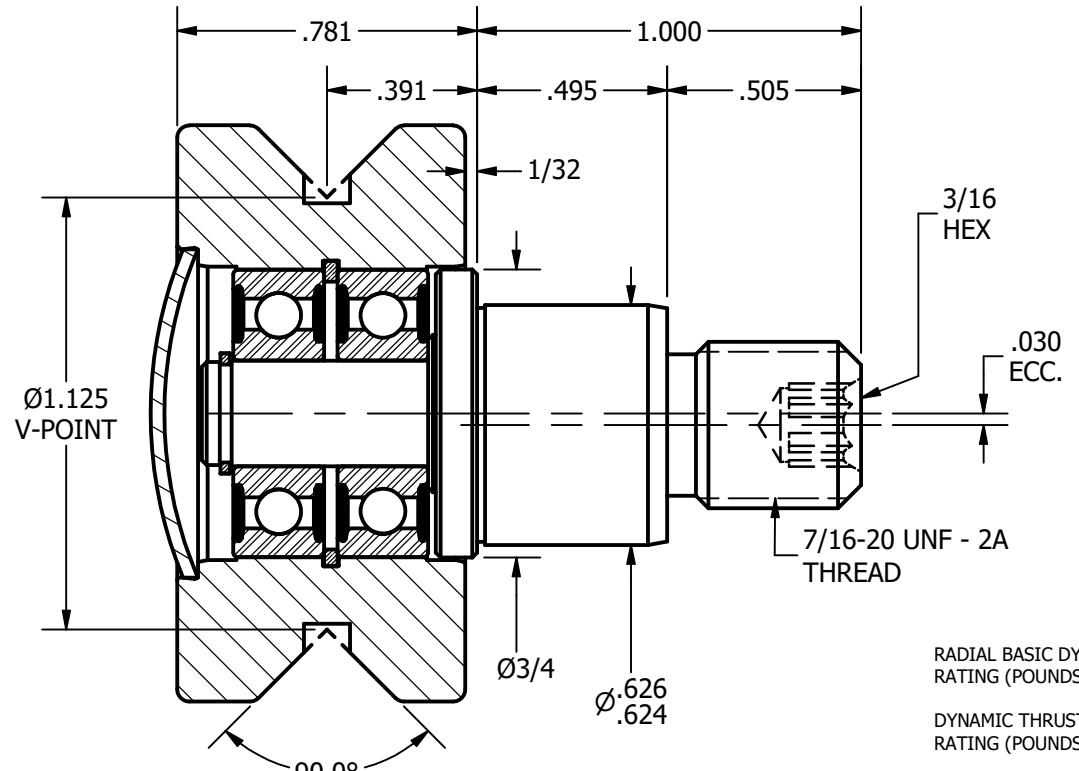
NOTES:
1. BEARING IS PACKED WITH GREASE



ISO VIEWS
SCALE 1:1



BASE VIEW
SCALE 2:1



SECTION A-A
SCALE 2:1

RADIAL BASIC DYNAMIC RATING (POUNDS) 235

DYNAMIC THRUST LOAD RATING (POUNDS) 145

MAXIMUM STATIC CAPACITY (POUNDS) 225

MATERIAL NOTES:

OUTER - BEARING STEEL, HEAT TREATED
STUD - STRESSPROOF
BALL BEARINGS - 607.2RS
SNAP RINGS - SPRING STEEL
END CAP - COLD ROLLED STEEL

CUSTOMER PART#

.XX = ± .01
 .XXX = ± .005
 .XXXX = ± .0005
 ANGLES = ± 1'
 INCH [METRIC]

CARTER MANUFACTURING IS NOT RESPONSIBLE FOR TYPOGRAPHICAL ERRORS

CARTER MANUFACTURING CO., INC.

GRAND HAVEN, MICHIGAN 49417

REVISION

PART NAME: **VHR-150 ASSEMBLY, ECCENTRIC**

SHEET 1 OF 2

CHANGE NOTE:

REV. BY	AUTHOR. BY	DRAWN BY	CHK'D BY	SALES	MATERIAL
JGV	KR	JGV	KR	KPR	NOTED
	DATE	DATE	DATE	DATE	DRAWING NO.
	4/21/2006	4/21/2006	4/21/2006	4/21/2006	VHRE-150-A