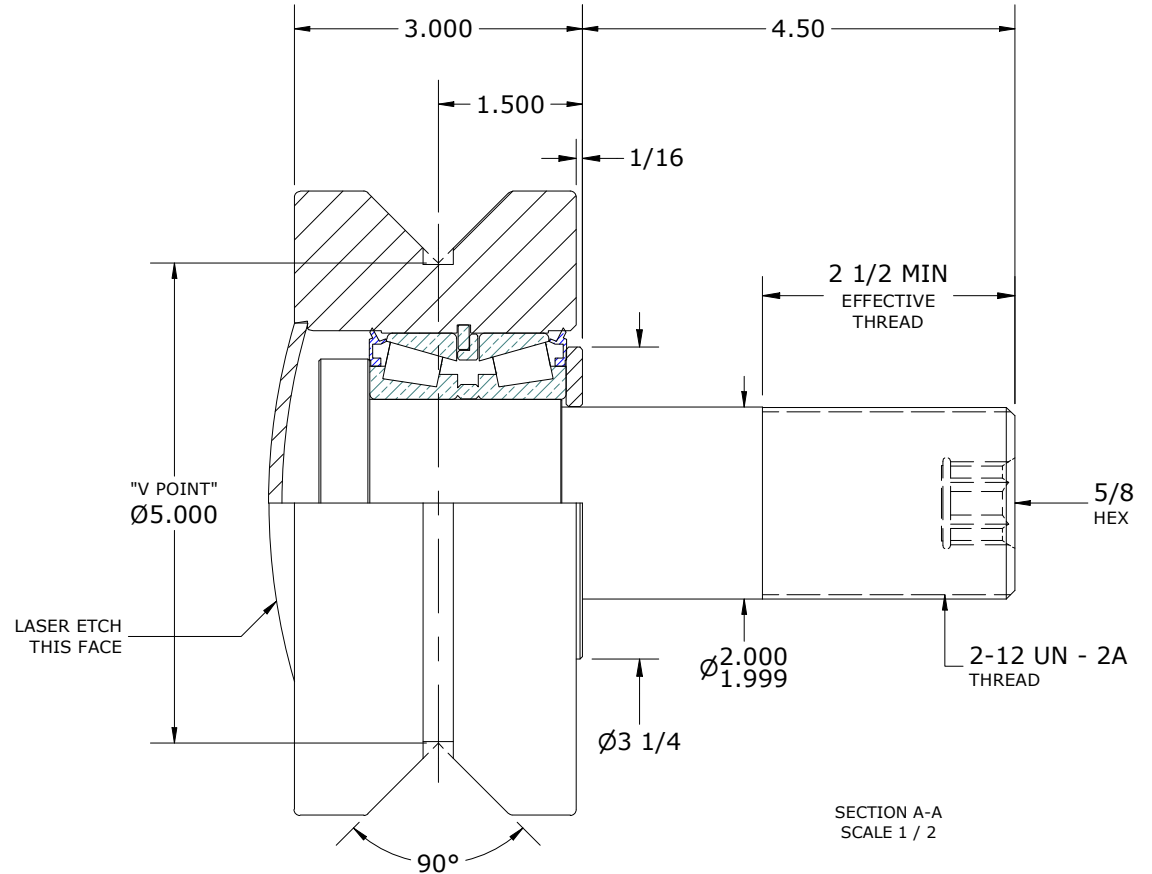
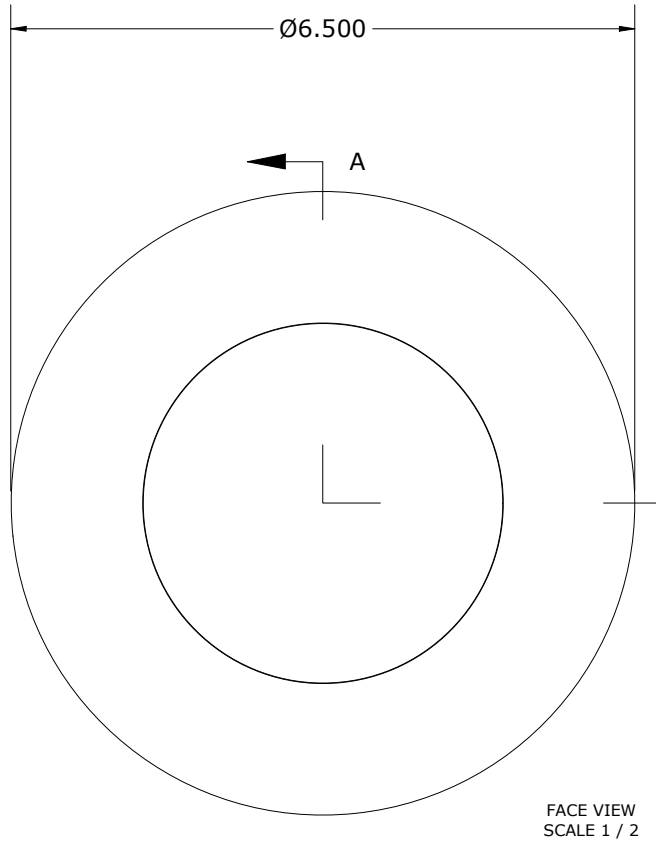
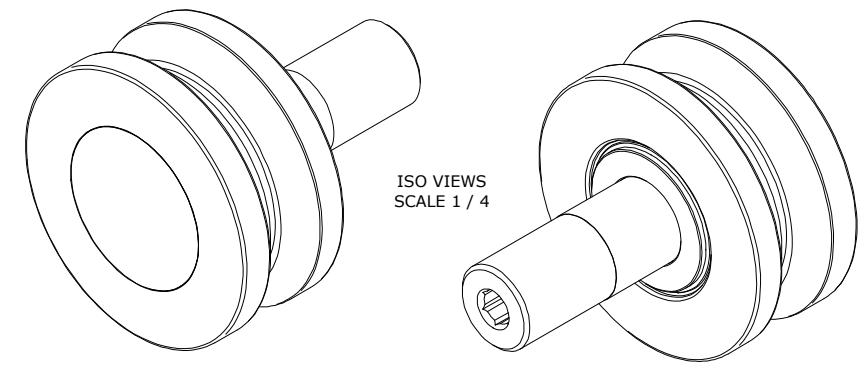


LOAD RATINGS		
RATING	lbf	Newtons
RADIAL BASIC DYNAMIC	35,840	159,424
STATIC THRUST LOAD	33,100	147,236
MAXIMUM STATIC CAPACITY	56,400	250,880

- NOTES:
 1. BEARING IS PACKED WITH NLGI GRADE 2, LITHIUM BASED GREASE (UNLESS OTHERWISE SPECIFIED)
 2. ALL EXPOSED SURFACES HAVE BLACK OXIDE
 3. CUSTOM LASER ETCHING IS AVAILABLE UPON REQUEST



MATERIAL NOTES:
 OUTER RING - BEARING STEEL, HEAT TREATED
 STUD - STEEL
 TAPERED SET - TIMKEN P/N: JLM-506489-30 OR EQUIVALENT
 WASHER - STEEL
 END CAP - STEEL
 SEAL(S) - SYNTHETIC

CUSTOMER PART#	XX = ± .01 XXX = ± .005 XXXX = ± .0005 ANGLES = ± 2' INCH [METRIC] FRACTION = ± 1/64
ENGINEERING CHANGE ORDER NOTE	
CARTER STANDARD SURFACE FINISH IS MEASURED IN "Ra" UNITS UNLESS OTHERWISE SPECIFIED.	

CARTER MANUFACTURING IS NOT RESPONSIBLE FOR TYPOGRAPHICAL ERRORS				CARTER MANUFACTURING CO., INC. GRAND HAVEN, MICHIGAN 49417			
REVISION				PART NAME: ASSEMBLY		PRODUCT TYPE: Hi-Rollers™	
C	AUTHOR BY HG	DRAWN BY AJH	CHK'D BY MD	SALES KR	MATERIAL NOTED		
REVISION BY DJB	DATE 2/27/2024	DATE 12/17/2001	DATE 2/27/2024	DATE 8/8/2011	SHEET 1 OF 2		