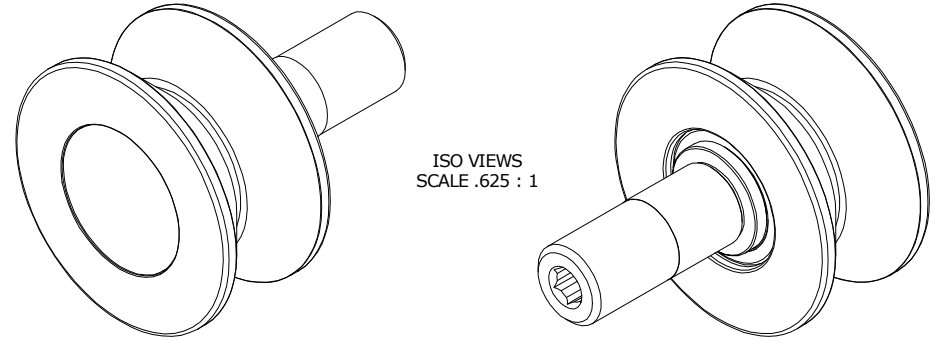


LOAD RATINGS	
RATING	Lbs
RADIAL BASIC DYNAMIC	2,760
STATIC THRUST LOAD	680
MAXIMUM STATIC CAPACITY	1,100

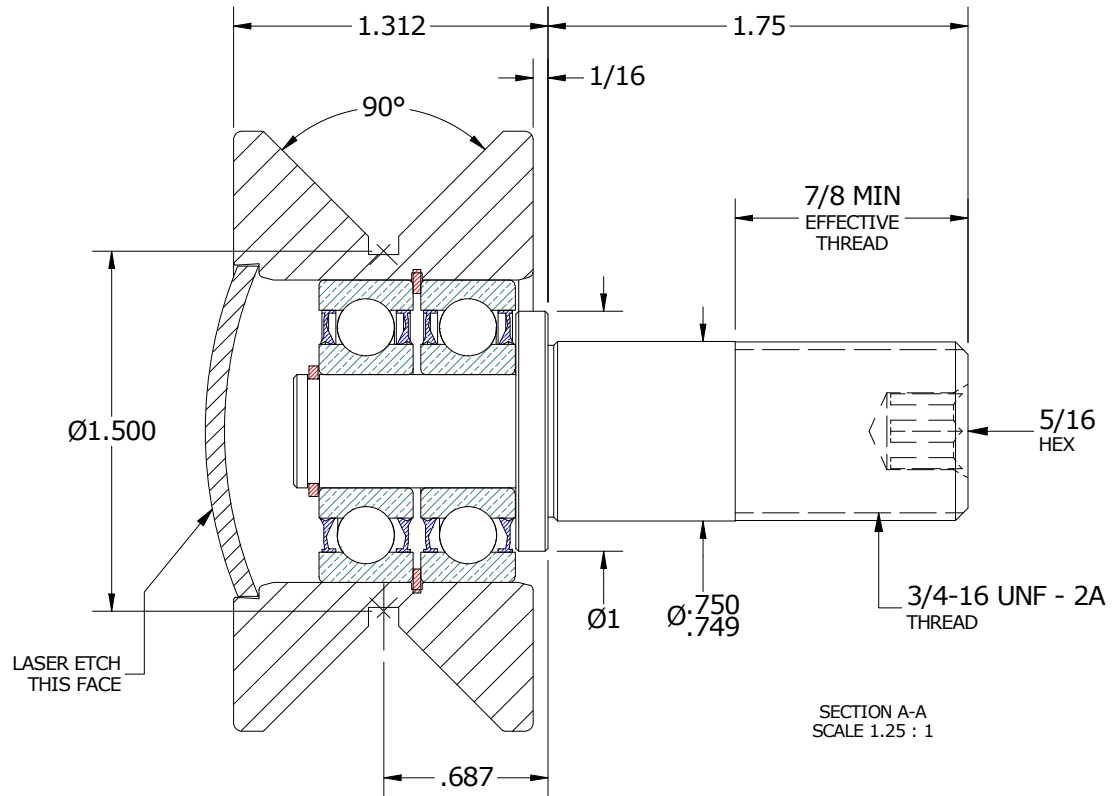
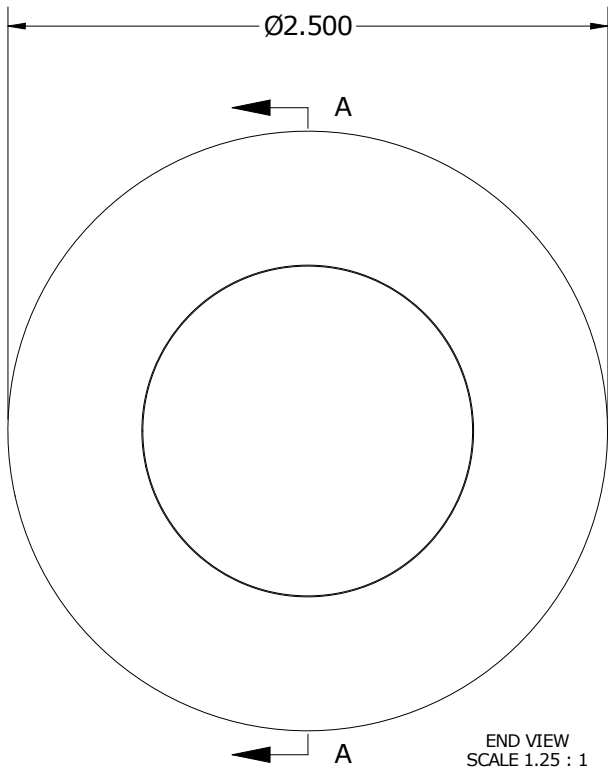
NOTES:

1. BALL BEARING COMES PRE-PACKED WITH GREASE
2. ALL EXPOSED SURFACES HAVE BLACK OXIDE
3. CUSTOM LASER ETCHING IS AVAILABLE UPON REQUEST

MS NO.	NSN NO.	DRAWING NO.	VHR-250-A
--------	---------	-------------	-----------



ISO VIEWS
SCALE .625 : 1



MATERIAL NOTES:

OUTER HOUSING- BEARING STEEL, HEAT TREATED
 STUD - STRESSPROOF
 END CAP - COLD ROLLED STEEL
 BALL BEARING ASSEMBLIES - 6201 2RS
 RETAINING RINGS - SPRING STEEL

CUSTOMER PART#

XX = ± .01
 XXX = ± .005
 XXXX = ± .0005
 ANGLES = ± 1'
 INCH [METRIC]
 FRACTION = ± 1/32

CARTER MANUFACTURING IS NOT RESPONSIBLE FOR TYPOGRAPHICAL ERRORS

CARTER MANUFACTURING CO., INC.
 GRAND HAVEN, MICHIGAN 49417

ENGINEERING CHANGE ORDER NOTE

REVISION

PART NAME: ASSEMBLY

PRODUCT TYPE: VHR

C

AUTHOR BY
HG

DRAWN BY
GJP

CHK'D BY
SGW

SALES
KPR

MATERIAL
NOTED

REVISION BY
MD

DATE
1/13/2016

DATE
3/1/2005

DATE
1/13/2016

DATE
3/27/2001

SHEET
1 OF 2