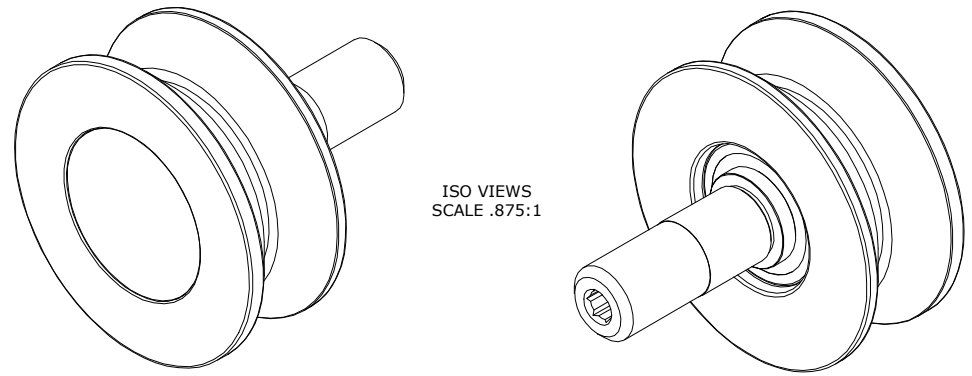


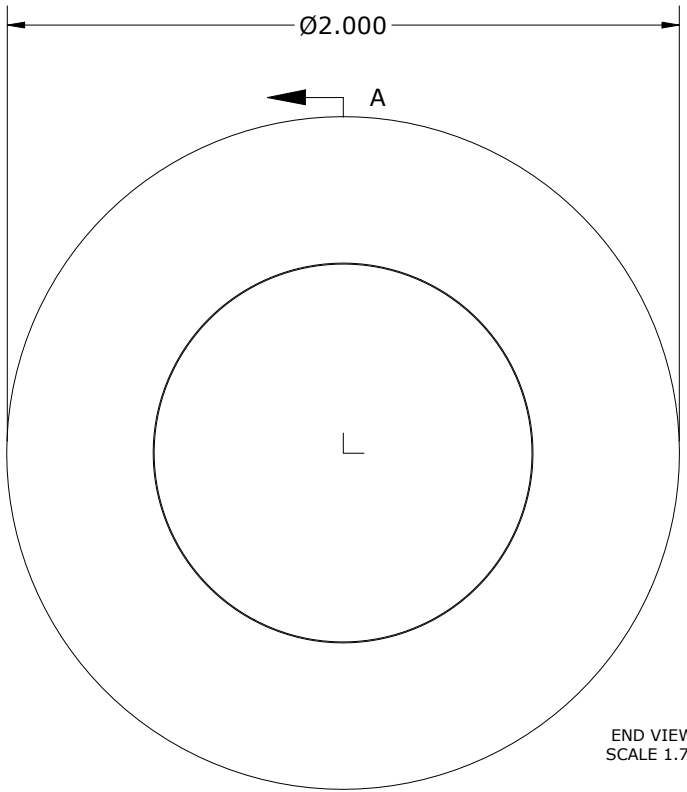
LOAD RATINGS	
RATING	Lbs
RADIAL BASIC DYNAMIC	1,350
STATIC THRUST LOAD	370
MAXIMUM STATIC CAPACITY	600

- NOTES:  
 1. BALL BEARINGS COME PRE-PACKED WITH GREASE.  
 2. BLACK OXIDE ON ALL EXPOSED SURFACES.  
 3. CUSTOM LASER ETCHING AVAILABLE UPON REQUEST.

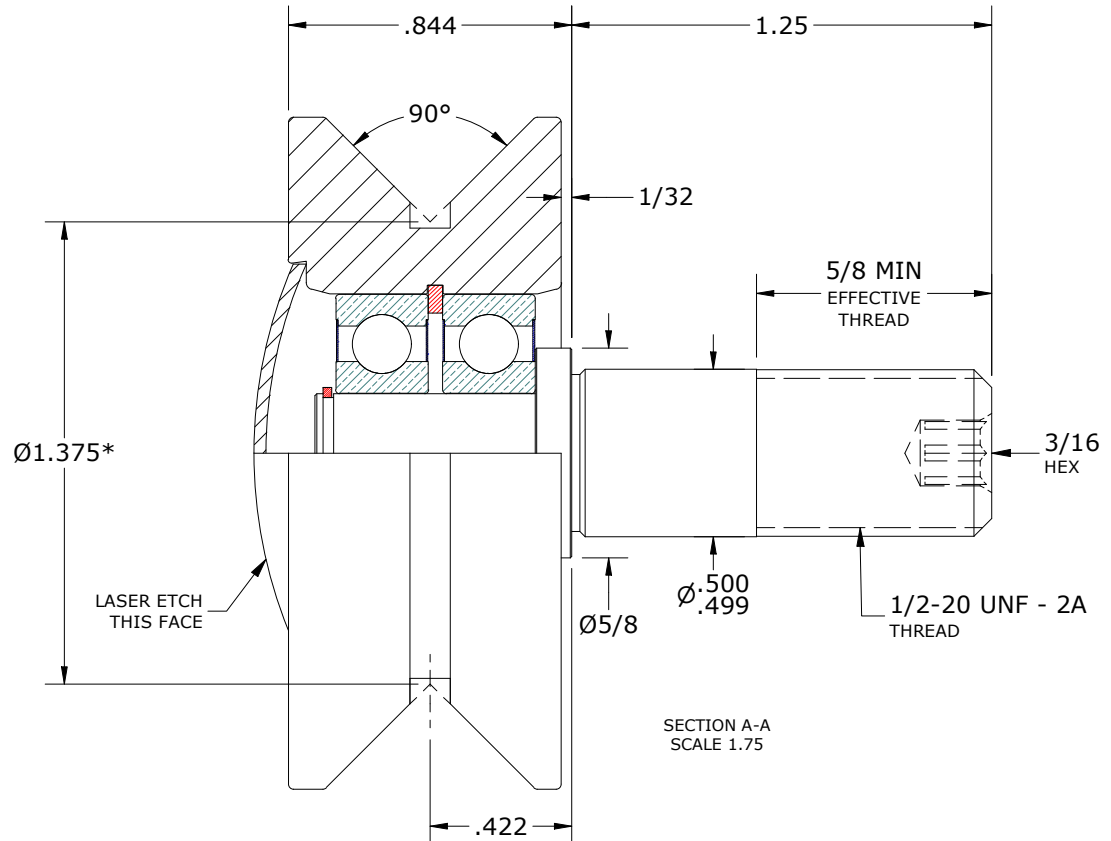
MS NO.	NSN NO.	DRAWING NO.	VHR-200-A
--------	---------	-------------	-----------



ISO VIEWS  
SCALE .875:1



END VIEW  
SCALE 1.75



SECTION A-A  
SCALE 1.75

\*DIMENSION IS PULLED FROM VIRTUAL POINT(S)

MATERIAL NOTES:  
 OUTER ROLLER HOUSING - BEARING STEEL, HEAT TREATED  
 STUD - STEEL  
 END CAP - STEEL  
 BEARING ASSEMBLIE(S)- 609.2RS  
 RETAINING RING(S) - SPRING STEEL

CUSTOMER PART#	XX = ± .01 XXX = ± .005 XXXX = ± .0005 ANGLES = ± 1' INCH [METRIC] FRACTION = ± 1/32
<b>ENGINEERING CHANGE ORDER NOTE</b>	

CARTER MANUFACTURING IS NOT RESPONSIBLE FOR TYPOGRAPHICAL ERRORS	
<b>REVISION</b>	
<b>B</b>	AUTHOR BY HG
REVISION BY SGW	DATE 12/8/2020

<b>CARTER MANUFACTURING CO., INC.</b> GRAND HAVEN, MICHIGAN 49417				PART NAME: ASSEMBLY		PRODUCT TYPE: VHR	
DRAWN BY SGW	CHK'D BY MD	SALES KR	MATERIAL NOTED	DATE 2/19/2009	DATE 12/8/2020	DATE 3/16/2009	SHEET 1 OF 2