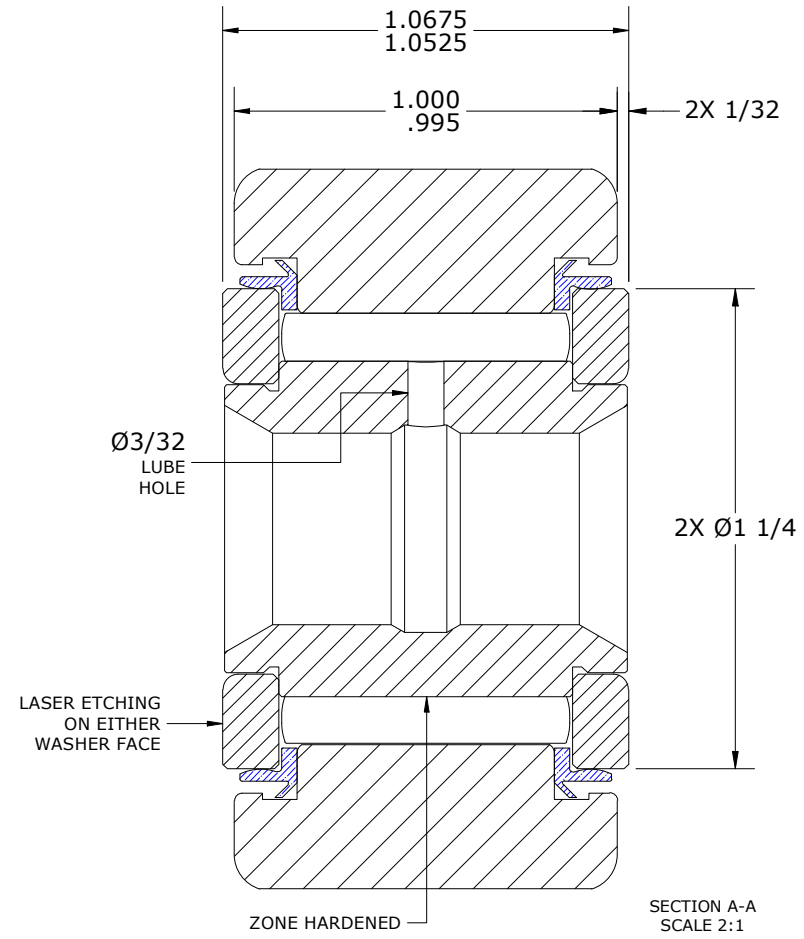
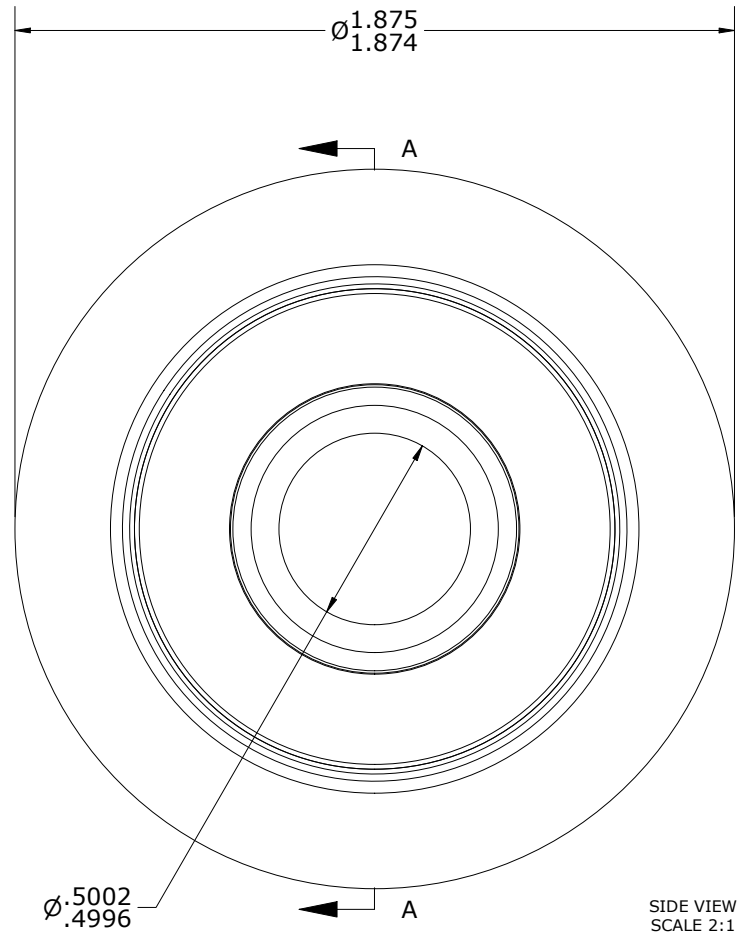
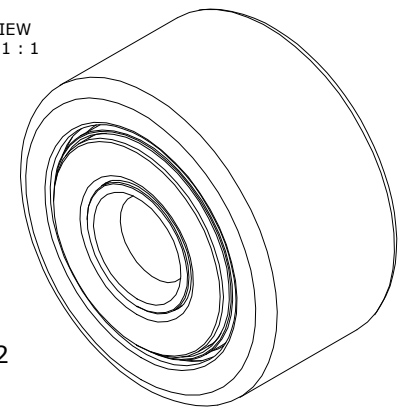


LOAD RATINGS		
RATING	lbf	Newton
RADIAL BASIC DYNAMIC	5,730	25,488
MAXIMUM STATIC CAPACITY	14,800	65,834

- NOTES:
1. BEARING IS PACKED WITH NLGI 2, FOOD GRADE, H1 GREASE (UNLESS OTHERWISE SPECIFIED)
 2. CUSTOM LASER ETCHING AVAILABLE UPON REQUEST
 3. LIMITING SPEED:
 - A. GREASE = 2,000 RPM

ISO VIEW
SCALE 1 : 1



Recommended Shaft Fits		
Fit Type - Dimension	Ø (Inch)	Ø (mm)
Push - Max	.4997	12.6924
Push - Min	.4993	12.6822
Drive - Max	.5003	12.7076
Drive - Min	.4999	12.6975
Press - Max	.5007	12.7178
Press - Min	.5003	12.7076

MATERIAL NOTES:

OUTER RING - 440C STAINLESS STEEL, HEAT TREATED

INNER RING - 440C STAINLESS STEEL, ZONE HARDENED

NEEDLE ROLLER(S) - 440C STAINLESS STEEL, HEAT TREATED

WASHER(S) - 440C STAINLESS STEEL, HEAT TREATED

SEAL(S) - SYNTHETIC

CUSTOMER PART#	XX = ± .01 XXX = ± .005 XXXX = ± .0005 ANGLES = ± 2' INCH [METRIC] FRACTION = ± 1/64
ENGINEERING CHANGE ORDER NOTE	
CARTER STANDARD SURFACE FINISH IS MEASURED IN "Ra" UNITS UNLESS OTHERWISE SPECIFIED.	

CARTER MANUFACTURING IS NOT RESPONSIBLE FOR TYPOGRAPHICAL ERRORS

REVISION	
C	AUTHOR BY HG
REVISION BY DJB	DATE 12/18/2023

CARTER MANUFACTURING CO., INC.
GRAND HAVEN, MICHIGAN 49417

PART NAME: ASSEMBLY				PRODUCT TYPE: Xtenda™	
DRAWN BY JAF	CHK'D BY MD	SALES NC	MATERIAL NOTED		
DATE 8/8/2006	DATE 12/18/2023	DATE 12/18/2023	SHEET 1 OF 2		