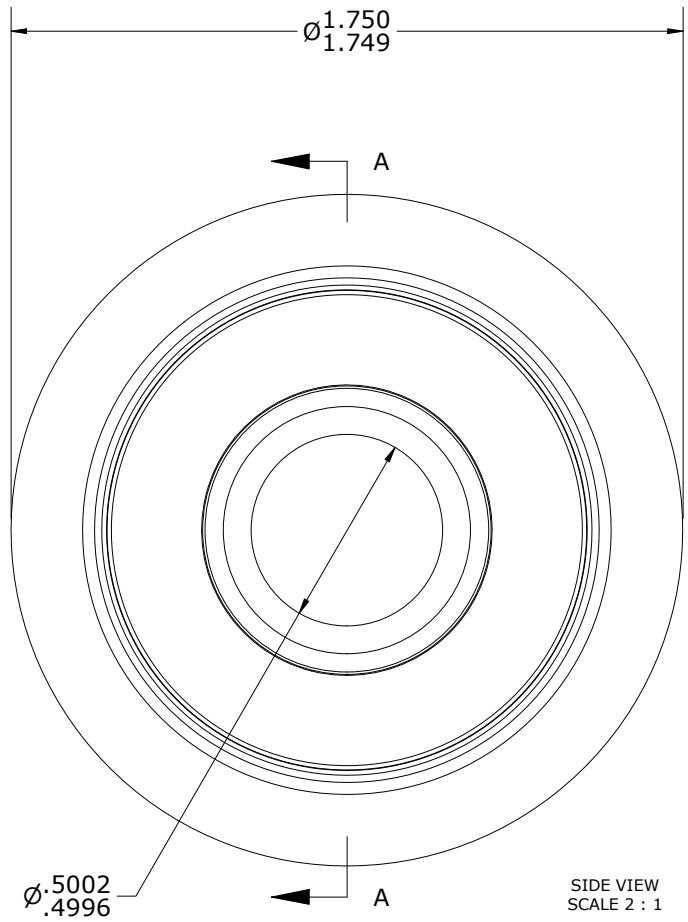
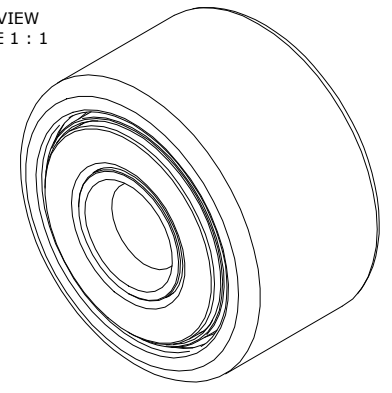


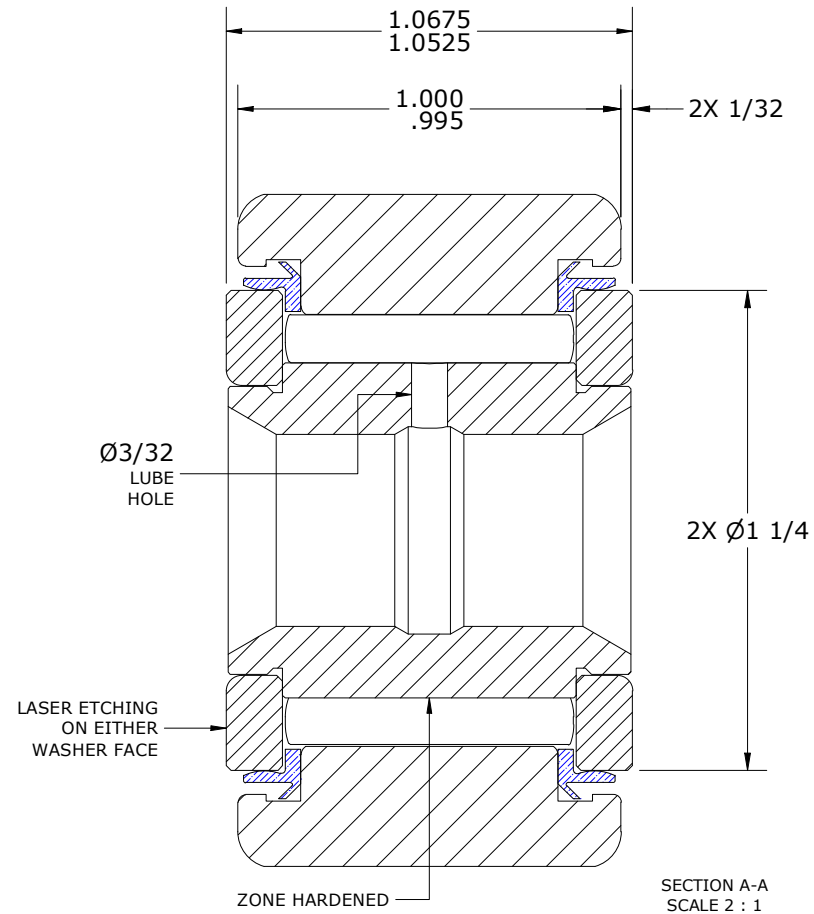
LOAD RATINGS		
RATING	lbf	Newtons
RADIAL BASIC DYNAMIC	5,730	25,488
MAXIMUM STATIC CAPACITY	14,800	65,834

- NOTES:
- BEARING COMES PACKED WITH CARTER STANDARD FOOD GRADE H1, NLGI 2 GREASE
 - LIMITING SPEED:
A. GREASE = 2,200 RPM
 - CUSTOM LASER ETCHING AVAILABLE UPON REQUEST

ISO VIEW
SCALE 1 : 1



SIDE VIEW
SCALE 2 : 1



SECTION A-A
SCALE 2 : 1

Recommended Shaft Fits		
Fit Type - Dimension	\varnothing (Inch)	\varnothing (mm)
Push - Max	.4997	12.6924
Push - Min	.4993	12.6822
Drive - Max	.5003	12.7076
Drive - Min	.4999	12.6975
Press - Max	.5007	12.7178
Press - Min	.5003	12.7076

MATERIAL NOTES:

- OUTER RING - 440C STAINLESS STEEL, HEAT TREATED
- INNER RING - 440C STAINLESS STEEL, ZONE HARDENED
- NEEDLE ROLLER(S) - 440C STAINLESS STEEL, HEAT TREATED
- WASHER(S) - 440C STAINLESS STEEL, HEAT TREATED
- SEAL(S) - SYNTHETIC

CUSTOMER PART#	XX = $\pm .01$ XXX = $\pm .005$ XXXX = $\pm .0005$ ANGLES = $\pm 2'$ INCH [METRIC] FRACTION = $\pm 1/64$
ENGINEERING CHANGE ORDER NOTE	
CARTER STANDARD SURFACE FINISH IS MEASURED IN "Ra" UNITS UNLESS OTHERWISE SPECIFIED.	

CARTER MANUFACTURING IS NOT RESPONSIBLE FOR TYPOGRAPHICAL ERRORS	
REVISION	
C	AUTHOR BY HG
REVISION BY DJB	DATE 9/7/2023

CARTER MANUFACTURING CO., INC. GRAND HAVEN, MICHIGAN 49417			
PART NAME: ASSEMBLY			PRODUCT TYPE: Xtenda™
DRAWN BY JAF	CHK'D BY MD	SALES NC	MATERIAL NOTED
DATE 8/9/2006	DATE 9/7/2023	DATE 9/7/2023	SHEET 1 OF 2