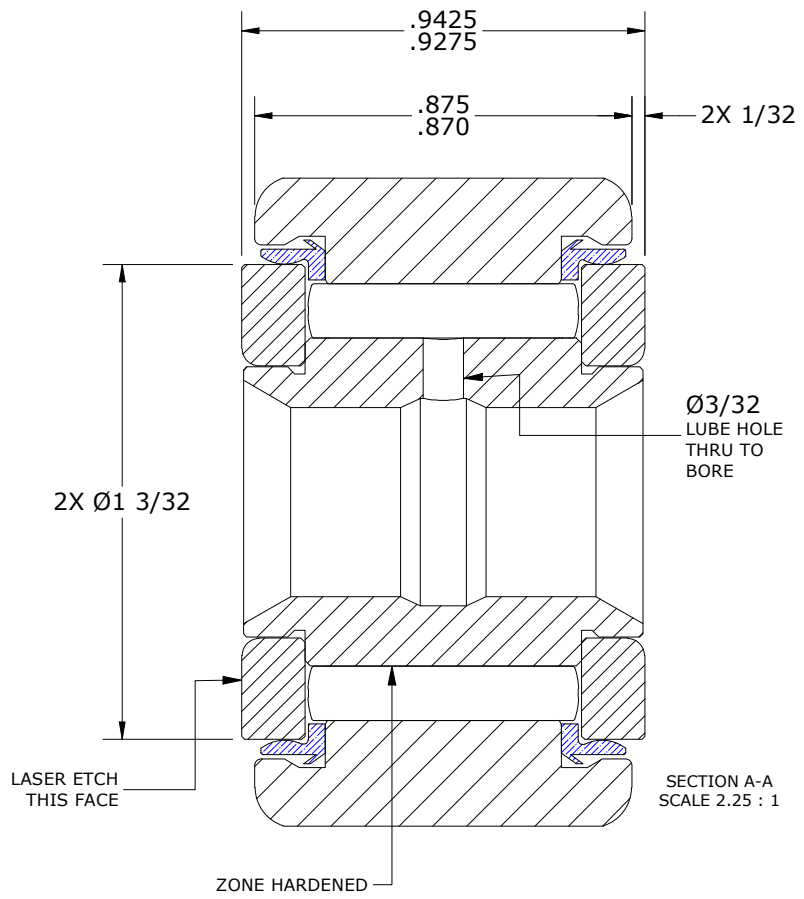
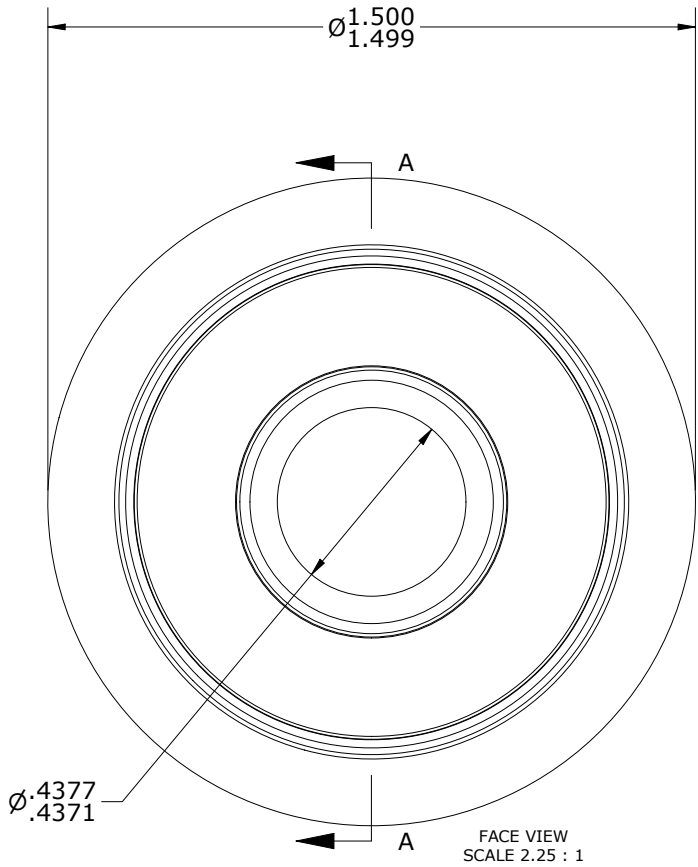
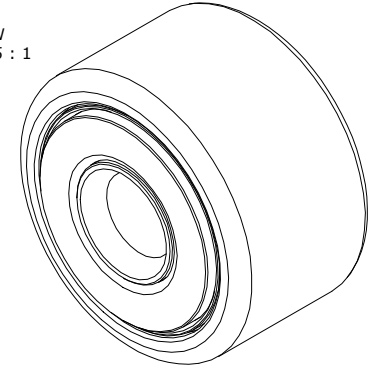


LOAD RATINGS		
RATING	lbf	Newton
RADIAL BASIC DYNAMIC	4,350	19,350
MAXIMUM STATIC CAPACITY	11,200	49,820

- NOTES:
- BEARING COMES PACKED WITH CARTER STANDARD FOOD GRADE H1, NLGI 2 GREASE
 - LIMITING SPEED:
 - GREASE = 2,500 RPM.
 - CUSTOM LASER ETCHING AVAILABLE UPON REQUEST.

ISO VIEW
SCALE 1.125 : 1



Recommended Shaft Fits		
Fit Type - Dimension	Ø (Inch)	Ø (mm)
Push - Max	.4372	11.1049
Push - Min	.4368	11.0947
Drive - Max	.4378	11.1201
Drive - Min	.4374	11.1100
Press - Max	.4380	11.1252
Press - Min	.4376	11.1150

MATERIAL NOTES:

OUTER RING - 440C STAINLESS STEEL, HEAT TREATED
 INNER RING - 440C STAINLESS STEEL, ZONE HARDENED
 WASHER(S) - 440C STAINLESS STEEL, HEAT TREATED
 NEEDLE(S) - 440C STAINLESS STEEL, HEAT TREATED
 SEAL(S) - SYNTHETIC

CUSTOMER PART#	XX = ± .01 XXX = ± .005 XXXX = ± .0005 ANGLES = ± 1' INCH [METRIC] FRACTION = ± 1/32
ENGINEERING CHANGE ORDER NOTE	

CARTER MANUFACTURING IS NOT RESPONSIBLE FOR TYPOGRAPHICAL ERRORS

REVISION	
E	AUTHOR BY HG
REVISION BY SGW	DATE 2/18/2021

CARTER MANUFACTURING CO., INC.
 GRAND HAVEN, MICHIGAN 49417

PART NAME: ASSEMBLY				PRODUCT TYPE: SY	
DRAWN BY GJP	CHK'D BY MD	SALES NC	MATERIAL NOTED		
DATE 9/29/2000	DATE 2/18/2021	DATE 2/18/2021	SHEET 1 OF 2		