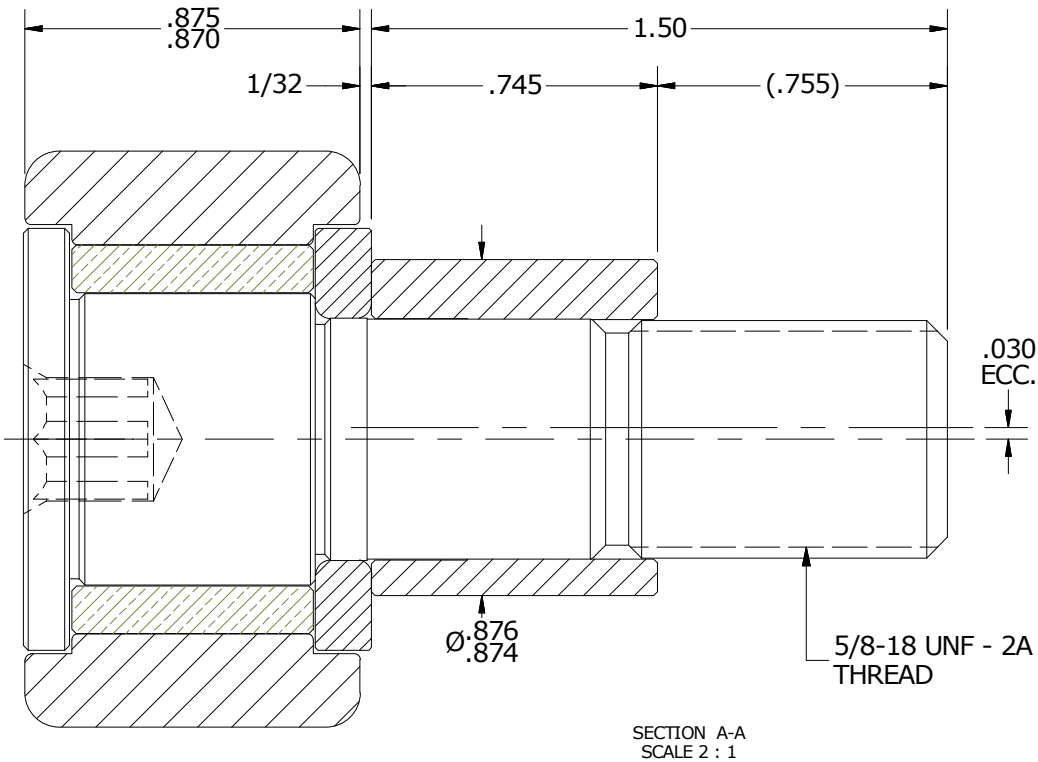
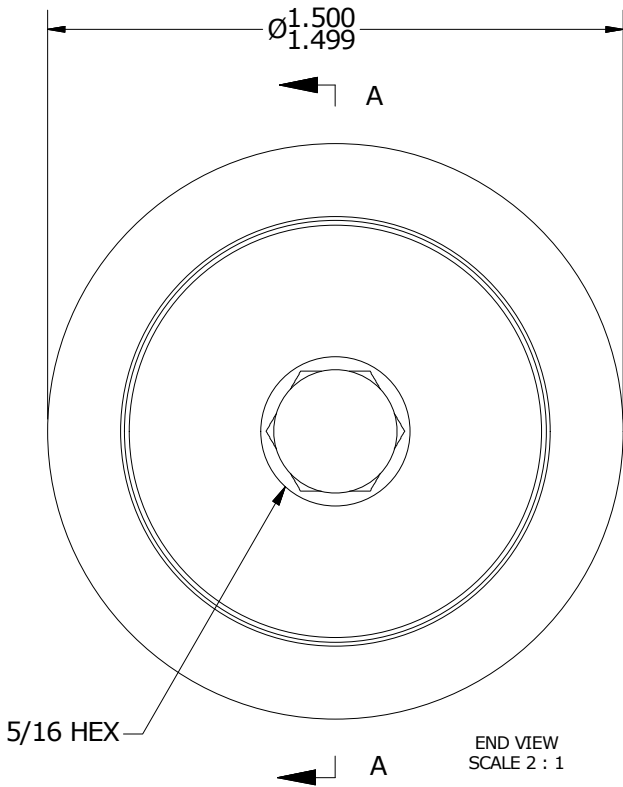
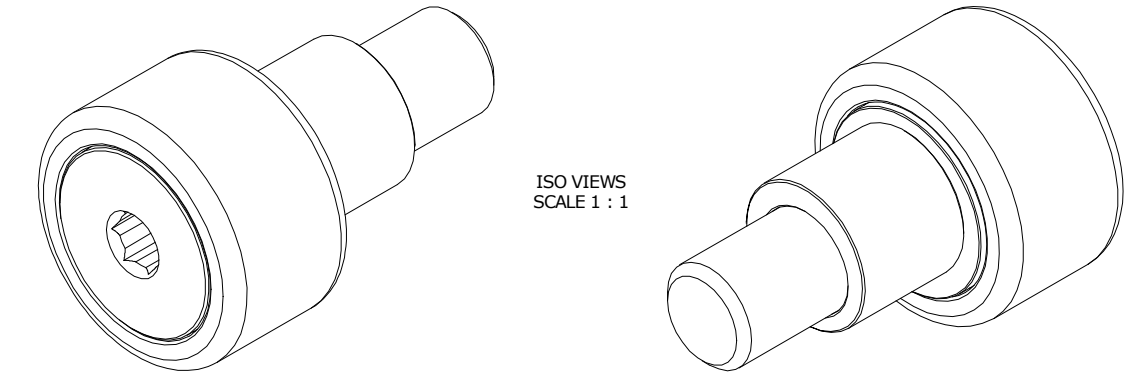


- NOTES:
- 1. BUSHING IS IMPREGNATED WITH OIL
 - 2. ALL EXPOSED SURFACES HAVE BLACK OXIDE



MATERIAL NOTES:

OUTER RING - BEARING STEEL, HEAT TREATED
STUD - COLD ROLLED STEEL
WASHER - BEARING STEEL, HEAT TREATED*
BUSHING - SINTERED BRONZE
ECCENTRIC SLEEVE - COLD ROLLED STEEL

*(DEPENDING ON MATERIAL AVAILABILITY MAY BE CONSTRUCTED FROM COLD ROLLED STEEL)

CUSTOMER PART#	XX = ± .01 XXX = ± .005 XXXX = ± .0005 ANGLES = ± 1° INCH [METRIC] FRACTION = ± 1/32	CARTER MANUFACTURING IS NOT RESPONSIBLE FOR TYPOGRAPHICAL ERRORS		CARTER MANUFACTURING CO., INC. GRAND HAVEN, MICHIGAN 49417			
		REVISION		PART NAME: ASSEMBLY			
ENGINEERING CHANGE ORDER NOTE		A	AUTHOR BY HG	DRAWN BY SGW	CHK'D BY MD	SALES KR	MATERIAL NOTED
			REVISION BY SGW	DATE 11/10/2016	DATE 11/8/2016	DATE 11/9/2016	DATE 11/11/2016