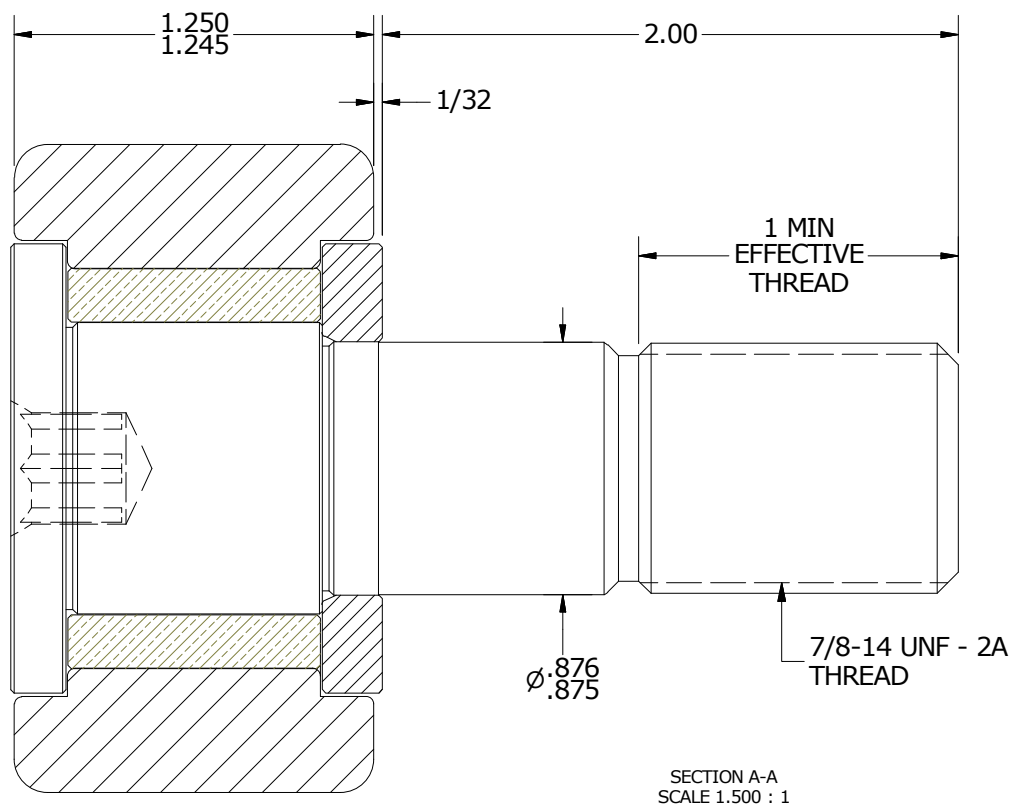
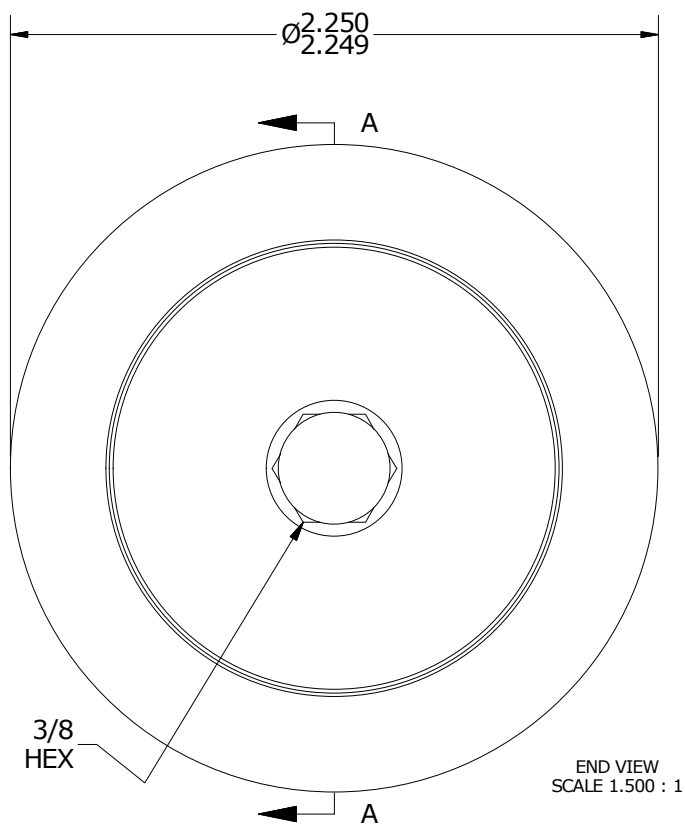
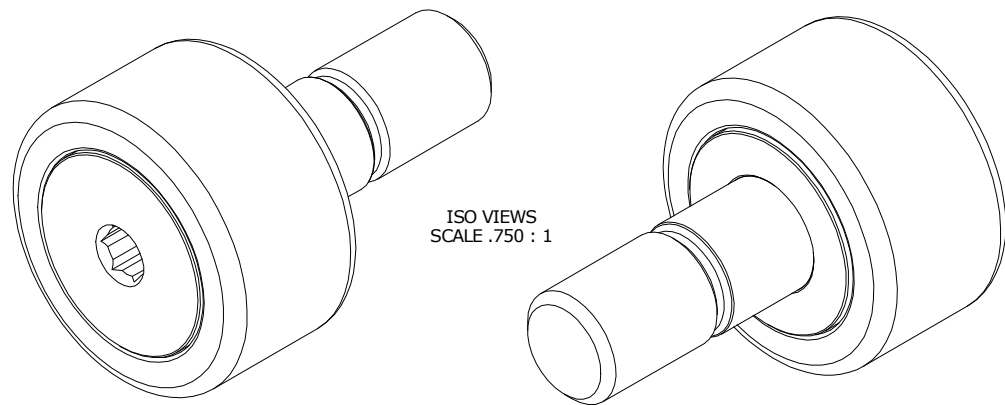


- NOTES:  
 1. BUSHING IS IMPREGNATED WITH OIL  
 2. ALL EXPOSED STEEL SURFACES HAVE BLACK OXIDE



MATERIAL NOTES:

OUTER RING - BEARING STEEL, HEAT TREATED  
 STUD - COLD ROLLED STEEL  
 BUSHING - SINTERED BRONZE  
 WASHER - BEARING STEEL, HEAT TREATED\*

\*(DEPENDING ON MATERIAL AVAILABILITY, MAY BE CONSTRUCTED FROM COLD ROLLED STEEL)

CUSTOMER PART#

XX = ± .01  
 XXX = ± .005  
 XXXX = ± .0005  
 ANGLES = ± 1'  
 INCH [METRIC]  
 FRACTION = ± 1/32

CARTER MANUFACTURING IS  
 NOT RESPONSIBLE FOR  
 TYPOGRAPHICAL ERRORS

**CARTER MANUFACTURING CO., INC.**

GRAND HAVEN, MICHIGAN 49417

REVISION

PART NAME: ASSEMBLY

ENGINEERING CHANGE ORDER NOTE

**B**

AUTHOR BY  
HG

DRAWN BY  
GJP

CHK'D BY  
MD

SALES  
KR

MATERIAL  
NOTED

REVISION BY  
SGW

DATE  
11/4/2016

DATE  
8/25/2000

DATE  
11/3/2016

DATE  
11/7/2016

SHEET  
1 OF 2