

NOTES:

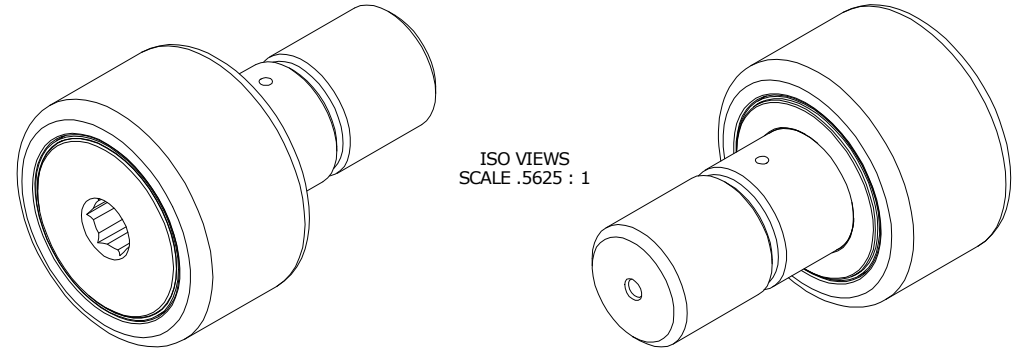
1. BEARING IS PACKED WITH NLGI GRADE 2, FOOD GRADE H1 GREASE UNLESS OTHERWISE SPECIFIED
2. CUSTOM LASER ETCHING UPON REQUEST

MS NO.

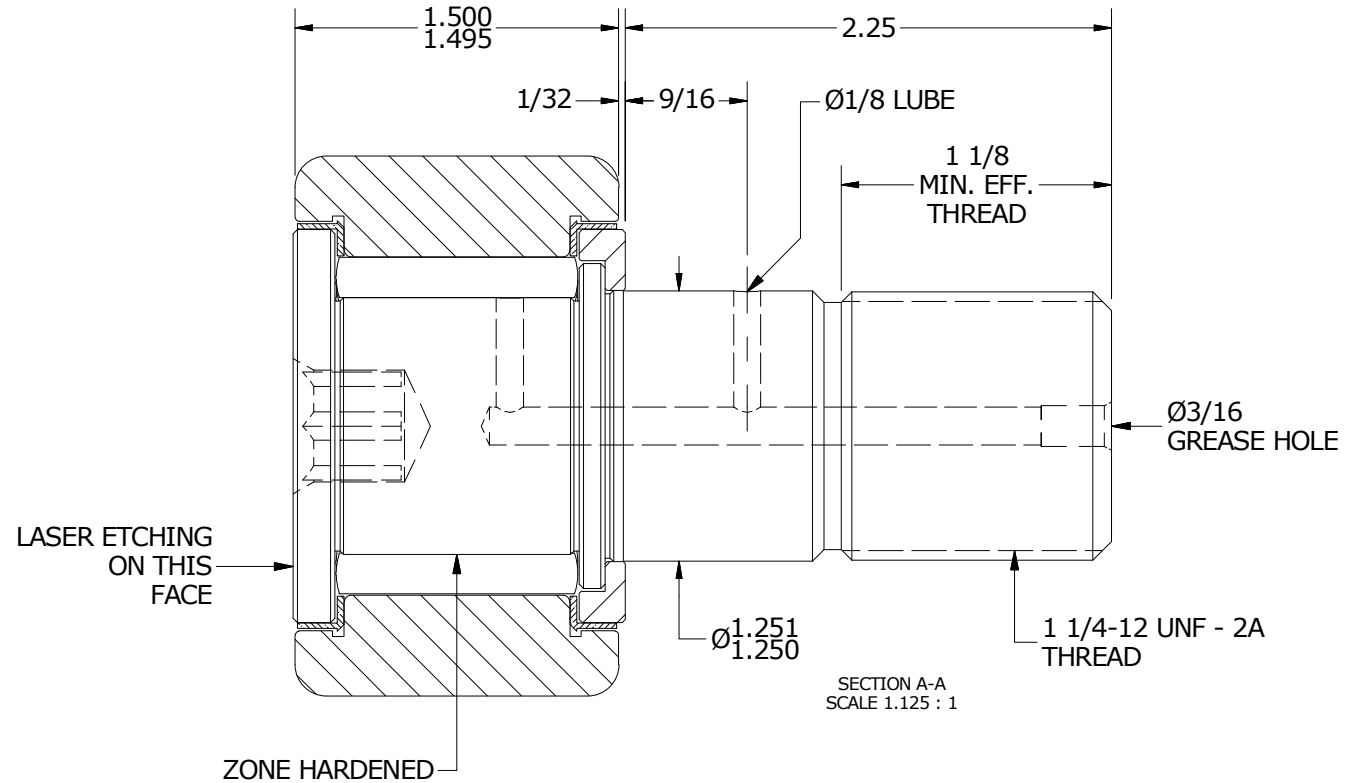
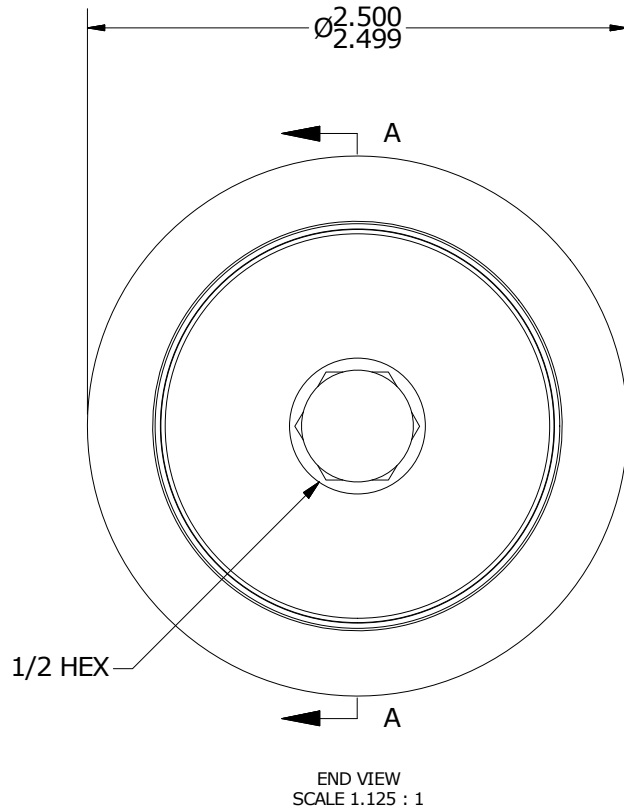
NSN NO.

DRAWING NO.

SCH-80-SB



ISO VIEWS  
SCALE .5625 : 1



MATERIAL NOTES:

- OUTER RING - 440C STAINLESS STEEL, HEAT TREATED
- STUD - 440C STAINLESS STEEL, ZONE HARDENED
- WASHER - 440C STAINLESS STEEL, HEAT TREATED
- NEEDLE ROLLERS - 440C STAINLESS STEEL, HEAT TREATED
- SEALS - SYNTHETIC

CUSTOMER PART#

XX = ± .01  
XXX = ± .005  
XXXX = ± .0005  
ANGLES = ± 1'  
INCH [METRIC]  
FRACTION = ± 1/32

CARTER MANUFACTURING IS NOT RESPONSIBLE FOR TYPOGRAPHICAL ERRORS

**CARTER MANUFACTURING CO., INC.**  
GRAND HAVEN, MICHIGAN 49417

ENGINEERING CHANGE ORDER NOTE

REVISION

PART NAME: ASSEMBLY

PRODUCT TYPE: SCH

**B**

AUTHOR BY  
HG

DRAWN BY  
SGW

CHK'D BY  
SGW

SALES  
KR

MATERIAL  
NOTED

REVISION BY  
MD

DATE  
2/1/2019

DATE  
10/31/2013

DATE  
2/1/2019

DATE  
10/31/2013

SHEET  
1 OF 2