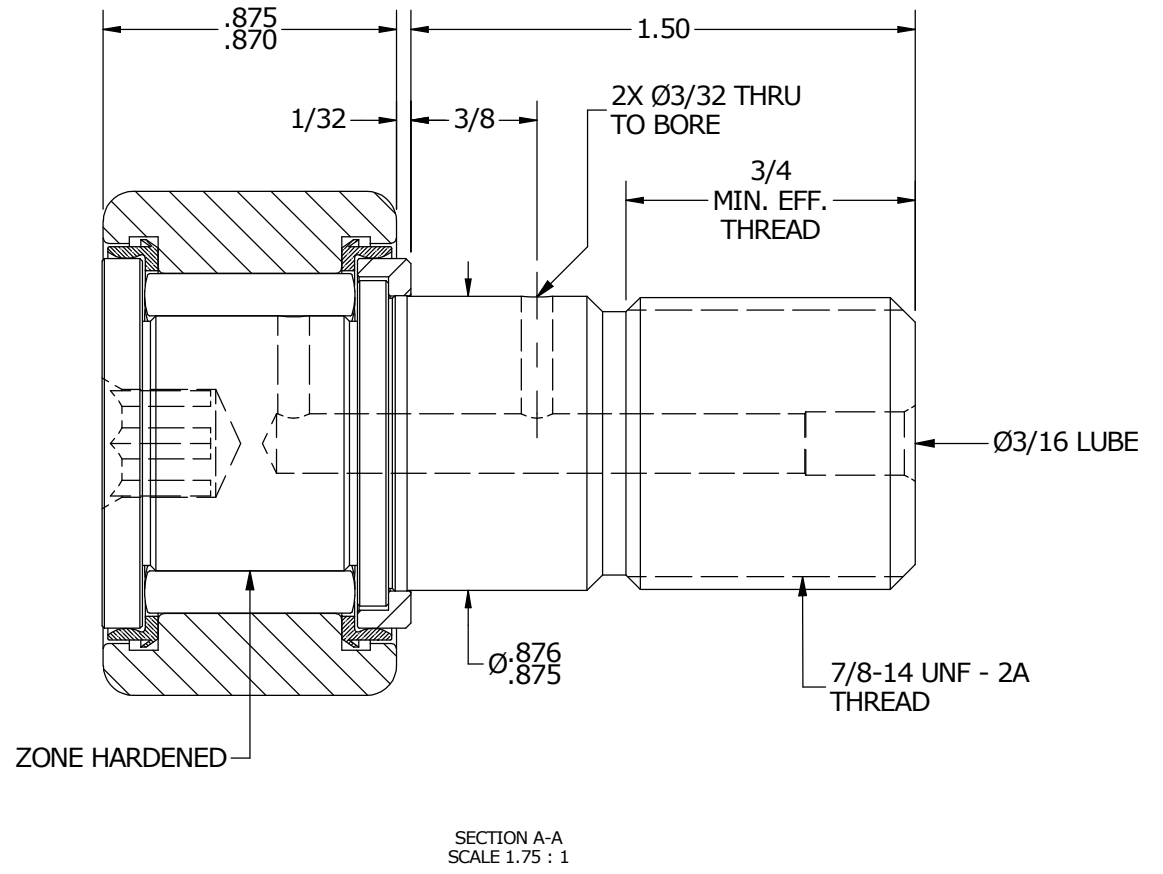
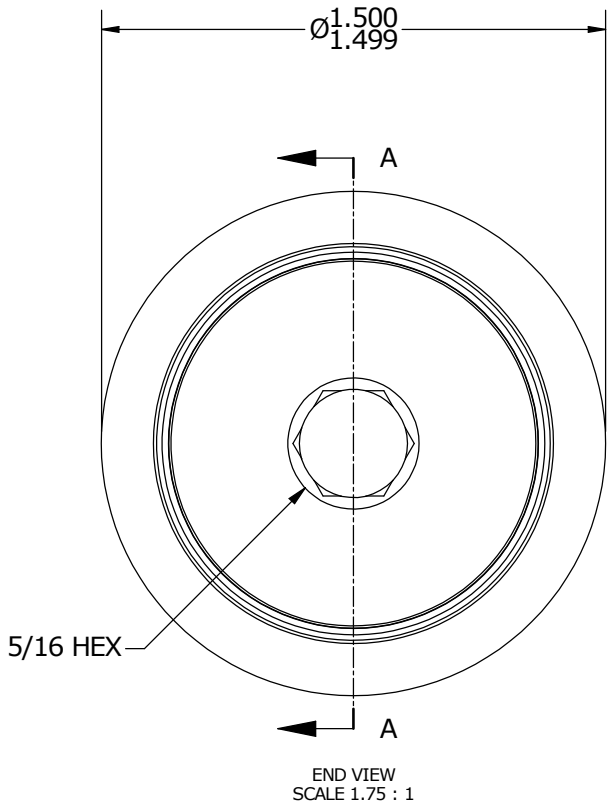
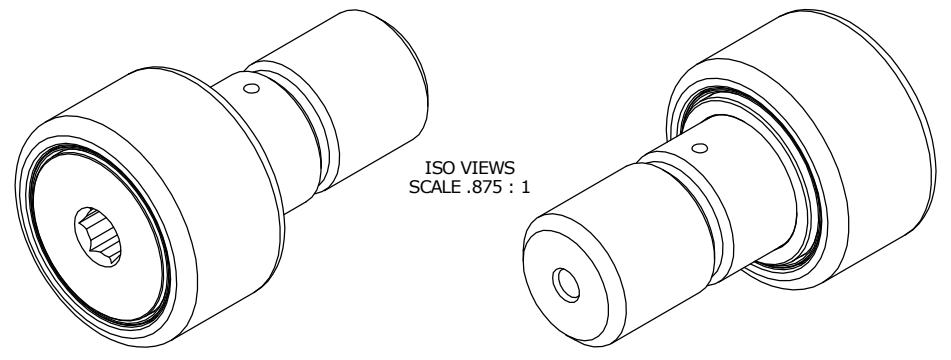


LOAD RATINGS	
RATING	Lbs
RADIAL BASIC DYNAMIC	3,872
MAXIMUM STATIC CAPACITY	7,896

NOTES:  
 1. BEARING COMES PACKED WITH CARTER STANDARD FOOD GRADE H1, NLGI 2 GREASE(UNLESS OTHERWISE SPECIFIED)

MS NO.	NSN NO.	DRAWING NO.
--------	---------	-------------



MATERIAL NOTES:  
 OUTER RACE - 440C STAINLESS STEEL, HEAT TREATED  
 STUD - 440C STAINLESS STEEL, ZONE HARDENED  
 WASHER - 440C STAINLESS STEEL, HEAT TREATED  
 NEEDLE ROLLERS -  
 SEALS - SYNTHETIC

CUSTOMER PART#	XX = ± .01 XXX = ± .005 XXXX = ± .0005 ANGLES = ± 1' INCH [METRIC] FRACTION = ± 1/32
<i>ENGINEERING CHANGE ORDER NOTE</i>	

CARTER MANUFACTURING IS NOT RESPONSIBLE FOR TYPOGRAPHICAL ERRORS

REVISION	
<b>C</b>	AUTHOR BY HG
REVISION BY MD	DATE 1/23/2015

**CARTER MANUFACTURING CO., INC.**  
 GRAND HAVEN, MICHIGAN 49417

PART NAME: ASSEMBLY

DRAWN BY	CHK'D BY	SALES	MATERIAL
JAF	SGW	KPR	NOTED
DATE	DATE	DATE	SHEET
7/26/2006	1/23/2015	7/25/2006	1 OF 2