

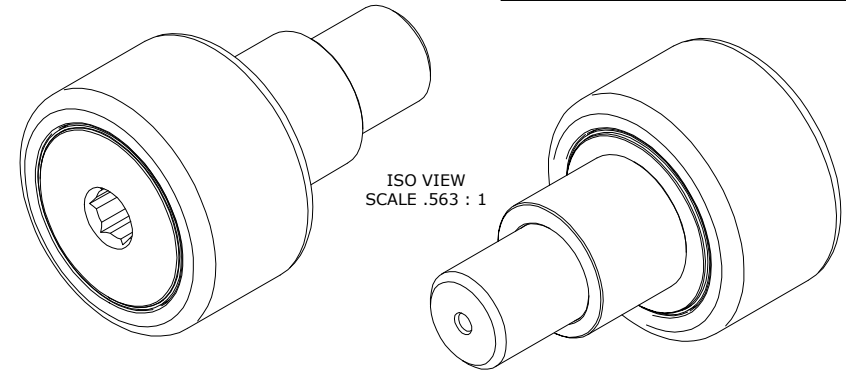
| LOAD RATINGS | | |
|-------------------------|--------|---------|
| RATING | lbf | Newtons |
| RADIAL BASIC DYNAMIC | 10,430 | 46,395 |
| MAXIMUM STATIC CAPACITY | 12,335 | 54,869 |

NOTES:

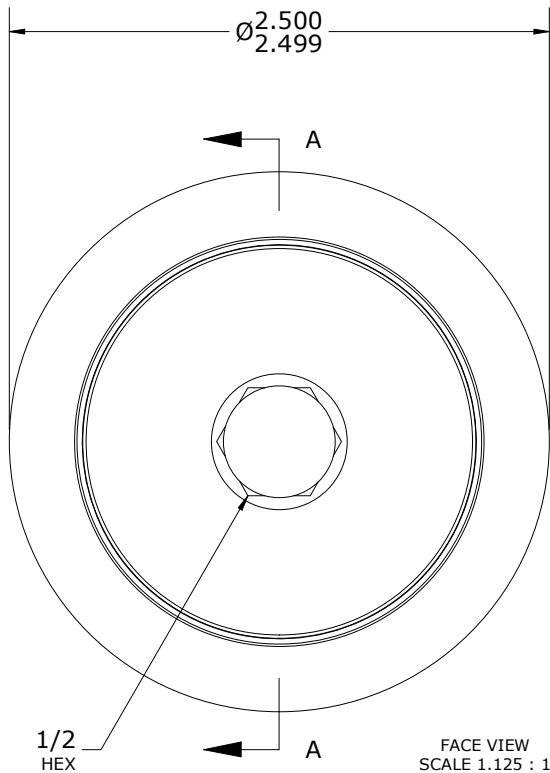
1. BEARING IS PACKED WITH NLGI GRADE 2, FOOD GRADE H1 GREASE (UNLESS OTHERWISE SPECIFIED)
2. CUSTOM LASER ETCHING AVAILABLE UPON REQUEST
3. LIMITING SPEED:
A. GREASE = 1,100 RPM

| RECOMMENDED MOUNTING HOLE Ø | | |
|-----------------------------|-------|---------|
| Limit | Inch | mm |
| MIN | 1.377 | 34.9758 |
| MAX | 1.379 | 35.0266 |

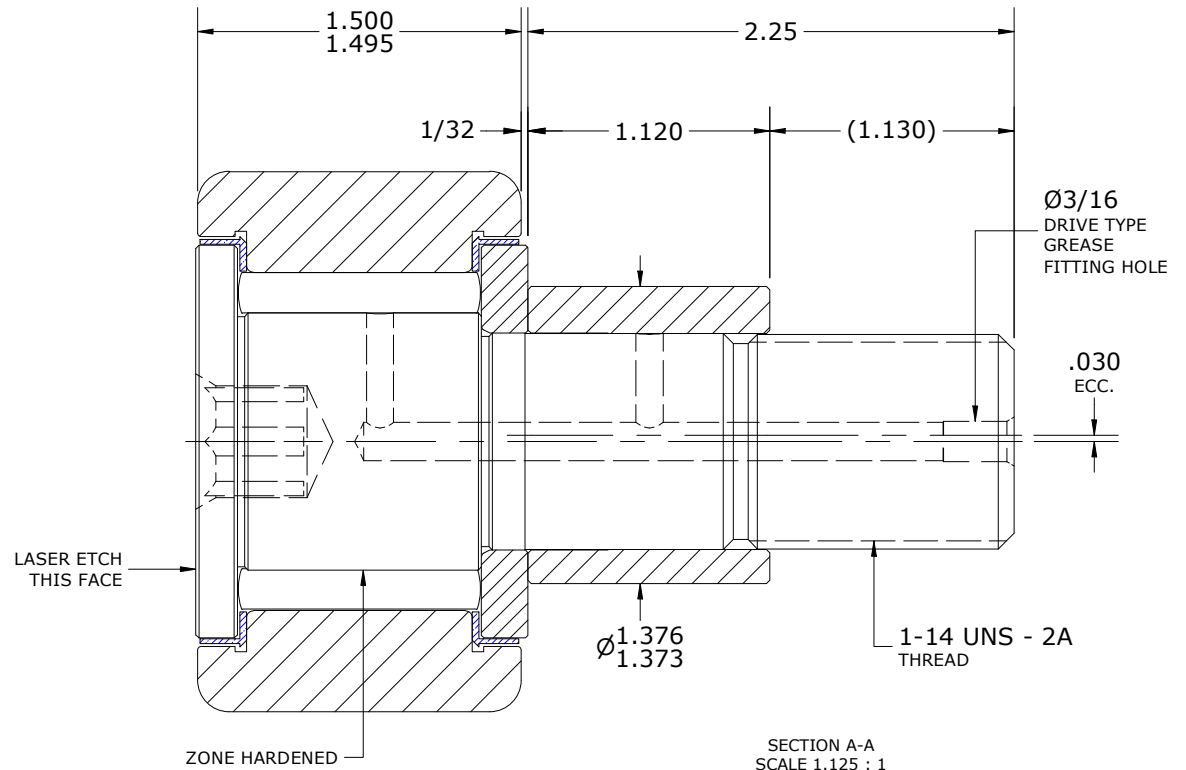
| MAXIMUM CLAMPING TORQUE** | | |
|---------------------------|----------|-----|
| Thread Type | Inch lbf | Nm |
| LUBRICATED | 1,125 | 127 |



ISO VIEW
SCALE .563 : 1



FACE VIEW
SCALE 1.125 : 1



SECTION A-A
SCALE 1.125 : 1

**TORQUE SPECIFICATION IS BASED ON LUBRICATED THREADS, IF USING DRY THREADS DOUBLE TORQUE VALUE

MATERIAL NOTES:
 OUTER RING - 440C STAINLESS STEEL, HEAT TREATED
 STUD - 440C STAINLESS STEEL, ZONE HARDENED
 WASHER - 440C STAINLESS STEEL, HEAT TREATED
 NEEDLE ROLLER(S) - 440C STAINLESS STEEL, HEAT TREATED
 ECCENTRIC SLEEVE - 300 SERIES STAINLESS STEEL
 SEAL(S) - SYNTHETIC

| | |
|--|---|
| <i>CUSTOMER PART#</i> | XX = ± .01 XXX = ± .005 XXXX = ± .0005 ANGLES = ± 2' INCH [METRIC] FRACTION = ± 1/64 |
| <i>ENGINEERING CHANGE ORDER NOTE</i> | |
| CARTER STANDARD SURFACE FINISH IS MEASURED IN "Ra" UNITS UNLESS OTHERWISE SPECIFIED. | |

| | |
|--|--------------------------|
| CARTER MANUFACTURING IS NOT RESPONSIBLE FOR TYPOGRAPHICAL ERRORS | |
| <i>REVISION</i> | |
| B | <i>AUTHOR BY</i> HG |
| <i>REVISION BY</i> DJB | <i>DATE</i> 10/4/2023 |

CARTER MANUFACTURING CO., INC.
 GRAND HAVEN, MICHIGAN 49417

| | | | | | |
|----------------------------|--------------------------|--------------------------|--------------------------|------------------------------|--|
| <i>PART NAME:</i> ASSEMBLY | | | | <i>PRODUCT TYPE:</i> Xtenda™ | |
| <i>DRAWN BY</i> SGW | <i>CHK'D BY</i> MD | <i>SALES</i> KR | <i>MATERIAL</i> NOTED | | |
| <i>DATE</i> 3/25/2009 | <i>DATE</i> 10/4/2023 | <i>DATE</i> 3/25/2009 | <i>SHEET</i> 1 OF 2 | | |