

LOAD RATINGS

RATING	lbf	Newtons
RADIAL BASIC DYNAMIC	5,730	25,488
MAXIMUM STATIC CAPACITY	6,000	26,689

NOTES:

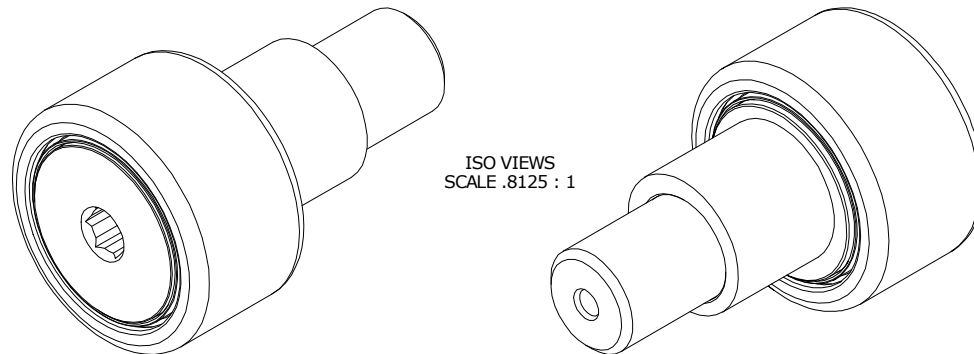
1. BEARING IS PACKED WITH NLGI GRADE 2, FOOD GRADE H1 GREASE UNLESS OTHERWISE SPECIFIED
2. CUSTOM LASER ETCHING AVAILABLE UPON REQUEST
3. LIMITING SPEED:
 - A. GREASE = 2,200 RPM

RECOMMENDED MOUNTING HOLE Ø

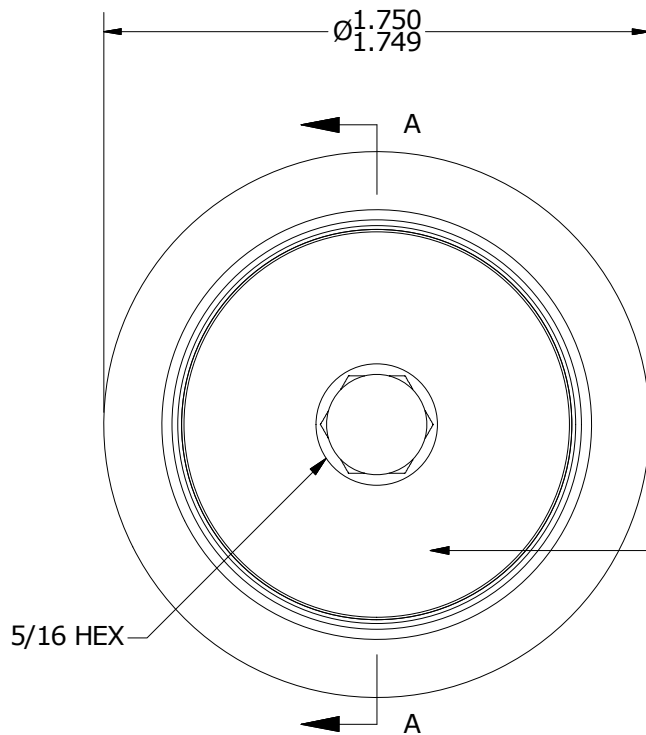
Limit	Inch	mm
MIN	1.002	25.451
MAX	1.004	25.502

MAXIMUM CLAMPING TORQUE

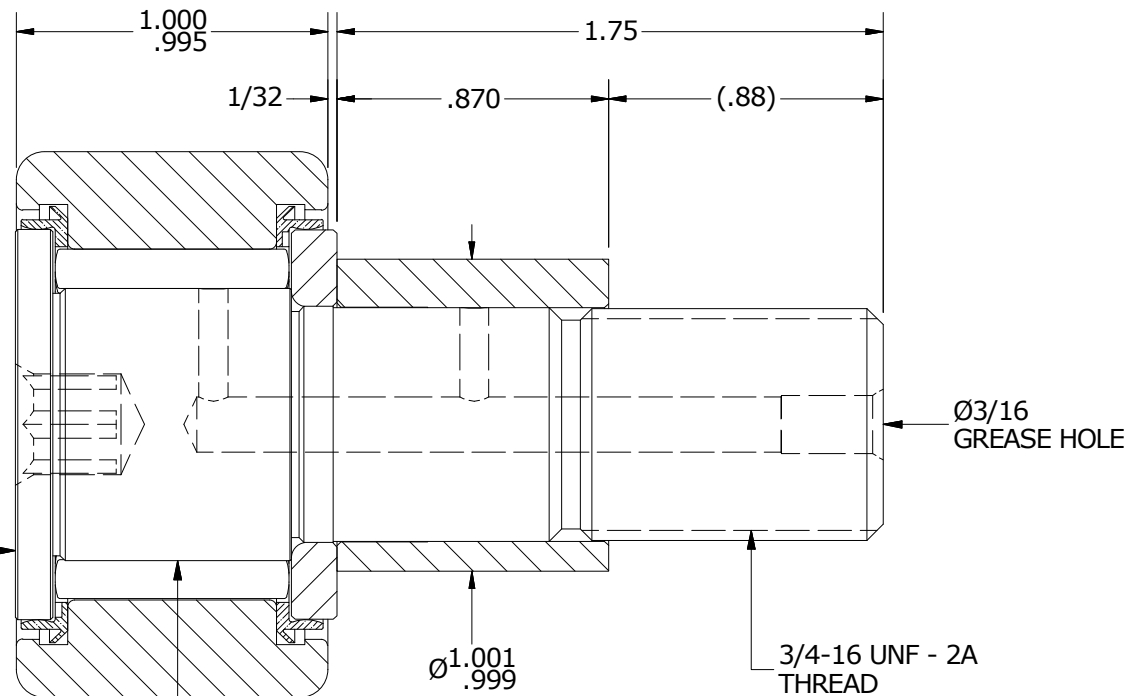
Thread Type	Inch lbf	Nm
DRY	1,250	141
LUBRICATED	625	70.5



ISO VIEWS
SCALE .8125 : 1



END VIEW
SCALE 1.625 : 1



SECTION A-A
SCALE 1.625 : 1

MATERIAL NOTES:

OUTER RING - 440C STAINLESS STEEL, HEAT TREATED
 STUD - 440C STAINLESS STEEL, ZONE HARDENED
 NEEDLE ROLLERS - 440C STAINLESS STEEL, HEAT TREATED
 WASHER - 440C STAINLESS STEEL, HEAT TREATED
 ECCENTRIC SLEEVE - 300 SERIES STAINLESS STEEL
 SEALS - SYNTHETIC

CUSTOMER PART#

XX = ± .01
 XXX = ± .005
 XXXX = ± .0005
 ANGLES = ± 1'
 INCH [METRIC]
 FRACTION = ± 1/32

CARTER MANUFACTURING IS NOT RESPONSIBLE FOR TYPOGRAPHICAL ERRORS

CARTER MANUFACTURING CO., INC.

GRAND HAVEN, MICHIGAN 49417

ENGINEERING CHANGE ORDER NOTE

REVISION

PART NAME: ASSEMBLY

PRODUCT TYPE: SCE

B

AUTHOR BY

DRAWN BY

CHK'D BY

SALES

MATERIAL

HG

EMD

SGW

KPR

NOTED

REVISION BY

DATE

DATE

DATE

DATE

SHEET

MD

8/13/2019

7/26/2006

8/12/2019

7/12/2006

1 OF 2