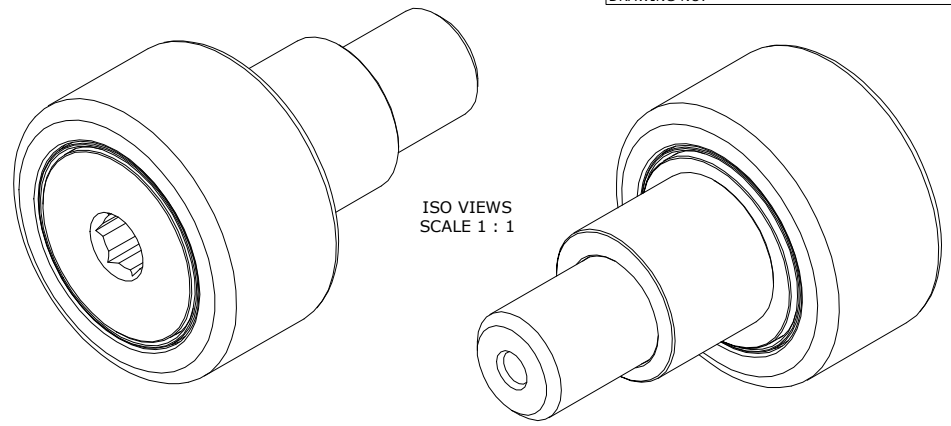


LOAD RATINGS		
RATING	lbf	Newtons
RADIAL BASIC DYNAMIC	4,350	19,350
MAXIMUM STATIC CAPACITY	4,000	17,793

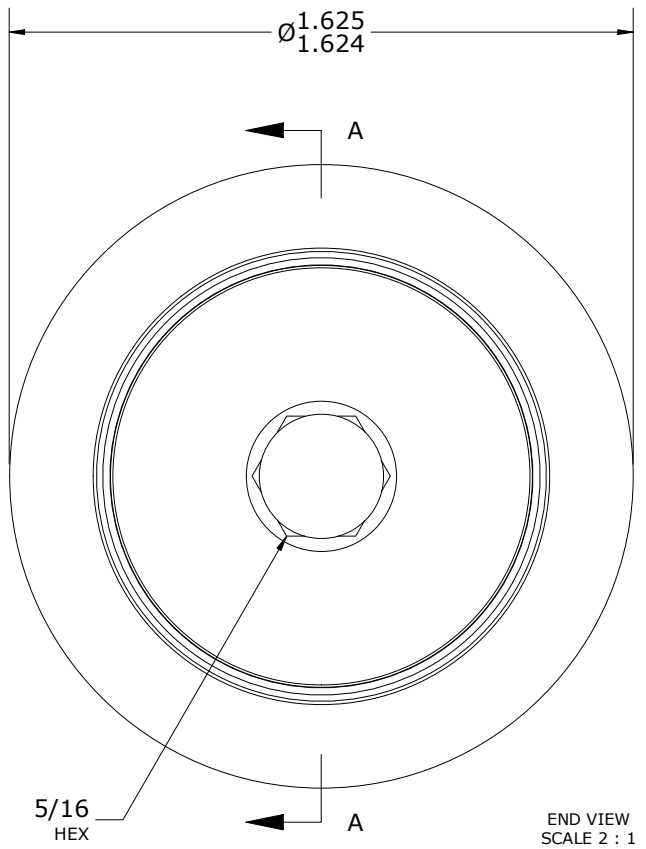
- NOTES:
- BEARING IS PACKED WITH NLGI GRADE 2, FOOD GRADE H1 GREASE (UNLESS OTHERWISE SPECIFIED)
 - CUSTOM LASER ETCHING AVAILABLE UPON REQUEST
 - LIMITING SPEED:
 - A. GREASE = 2,350 RPM

RECOMMENDED MOUNTING HOLE Ø		
Limit	Inch	mm
MIN	.877	22.279
MAX	.879	22.327

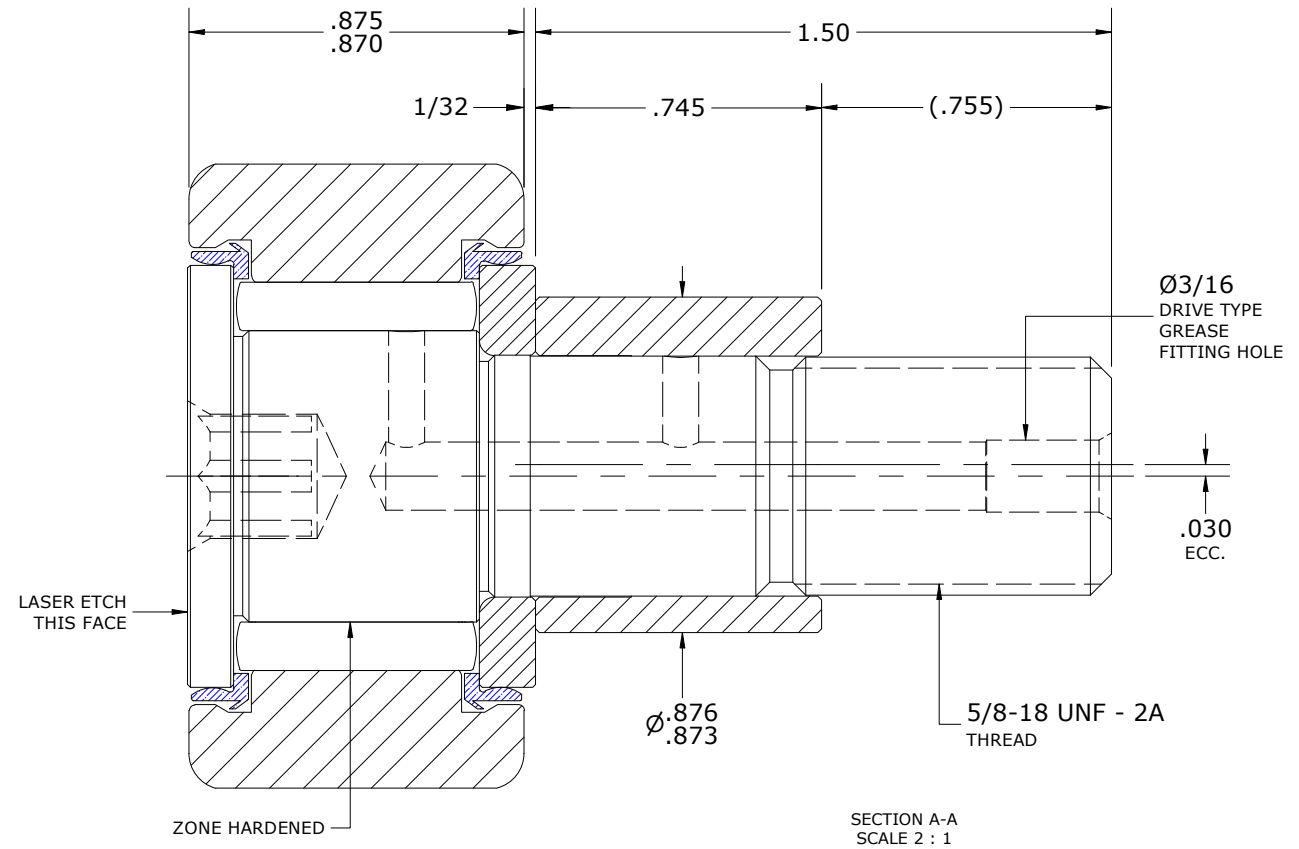
MAXIMUM CLAMPING TORQUE**		
Thread Type	Inch lbf	Nm
LUBRICATED	325	36.5



ISO VIEWS
SCALE 1 : 1



END VIEW
SCALE 2 : 1



SECTION A-A
SCALE 2 : 1

**TORQUE SPECIFICATION IS BASED ON LUBRICATED THREADS, IF USING DRY THREADS DOUBLE TORQUE VALUE

MATERIAL NOTES:

- OUTER RING - 440C STAINLESS STEEL, HEAT TREATED
- STUD - 440C STAINLESS STEEL, ZONE HARDENED
- WASHER - 440C STAINLESS STEEL, HEAT TREATED
- NEEDLE ROLLER(S) - 440C STAINLESS STEEL, HEAT TREATED
- SEAL(S) - SYNTHETIC
- ECCENTRIC SLEEVE - 300 SERIES STAINLESS STEEL

<i>CUSTOMER PART#</i>	XX = ± .01 XXX = ± .005 XXXX = ± .0005 ANGLES = ± 2' INCH [METRIC] FRACTION = ± 1/64
<i>ENGINEERING CHANGE ORDER NOTE</i>	
CARTER STANDARD SURFACE FINISH IS MEASURED IN "Ra" UNITS UNLESS OTHERWISE SPECIFIED.	

CARTER MANUFACTURING IS NOT RESPONSIBLE FOR TYPOGRAPHICAL ERRORS				CARTER MANUFACTURING CO., INC. GRAND HAVEN, MICHIGAN 49417			
<i>REVISION</i>				PART NAME: ASSEMBLY		PRODUCT TYPE: SC	
C	AUTHOR BY HG	DRAWN BY EMD	CHK'D BY MD	SALES NC	MATERIAL NOTED		
REVISION BY DJB	DATE 2/9/2024	DATE 7/26/2006	DATE 2/9/2024	DATE 3/8/2021	SHEET 1 OF 2		