

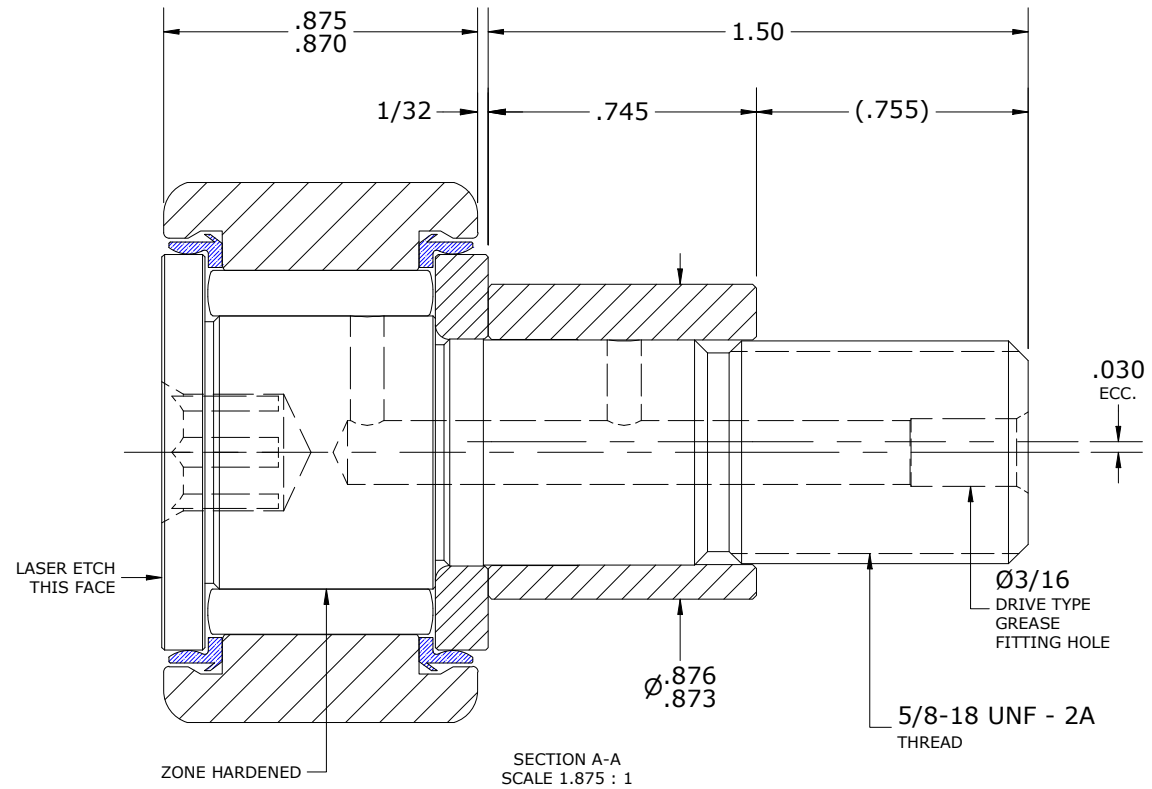
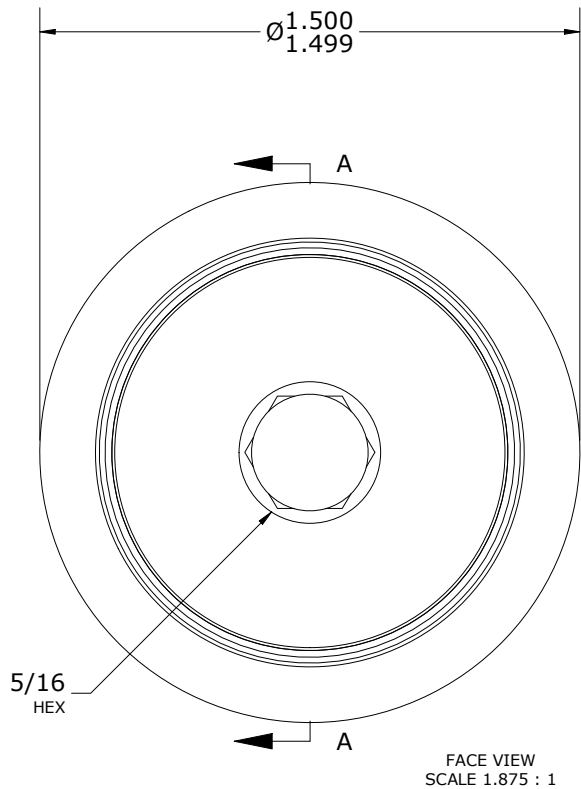
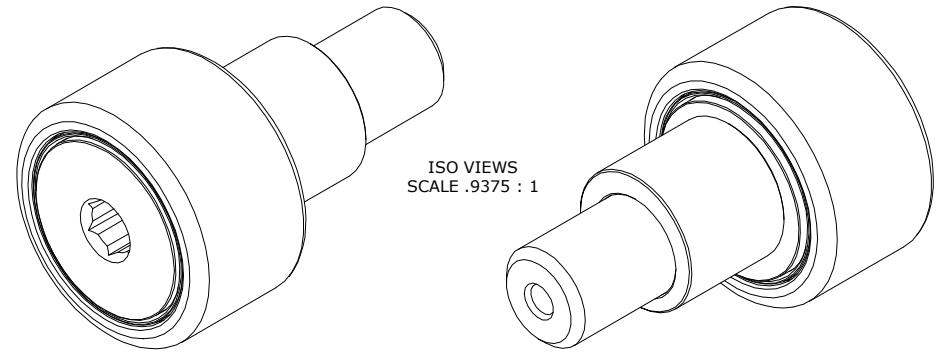
LOAD RATINGS		
RATING	Lbf	Newtons
RADIAL BASIC DYNAMIC	4,000	17,793
MAXIMUM STATIC CAPACITY	4,400	19,572

NOTES:

- BEARING IS PACKED WITH NLGI GRADE 2, FOOD GRADE H1 GREASE (UNLESS OTHERWISE SPECIFIED)
- LIMITING SPEED:
 - A. GREASE = 2,500 RPM
- CUSTOM LASER ETCHING AVAILABLE UPON REQUEST

RECOMMENDED MOUNTING HOLE Ø		
Limit	Inch	mm
MIN	.877	22.276
MAX	.879	22.327

MAXIMUM CLAMPING TORQUE**		
Thread Type	Inch lbf	Nm
LUBRICATED	325	36.5



** (TORQUE SPECIFICATION IS BASED ON LUBRICATED THREADS, IF USING DRY THREADS DOUBLE TORQUE VALUE)

MATERIAL NOTES:

- OUTER RING - 440C STAINLESS STEEL, HEAT TREATED
- STUD - 440C STAINLESS STEEL, ZONE HARDENED
- NEEDLE ROLLER(S) - 440C STAINLESS STEEL, HEAT TREATED
- WASHER - 440C STAINLESS STEEL, HEAT TREATED
- ECCENTRIC SLEEVE - 300 SERIES STAINLESS STEEL
- SEAL(S) - SYNTHETIC

CUSTOMER PART#

XX = ± .01
 XXX = ± .005
 XXXX = ± .0005
 ANGLES = ± 2'
 INCH [METRIC]
 FRACTION = ± 1/64

CARTER MANUFACTURING IS NOT RESPONSIBLE FOR TYPOGRAPHICAL ERRORS

CARTER MANUFACTURING CO., INC.
 GRAND HAVEN, MICHIGAN 49417

ENGINEERING CHANGE ORDER NOTE

REVISION		PART NAME: ASSEMBLY		PRODUCT TYPE: Xtenda™	
D	AUTHOR BY HG	DRAWN BY AJH	CHK'D BY MD	SALES KPR	MATERIAL NOTED
REVISION BY DJB	DATE 8/16/2023	DATE 11/21/2001	DATE 8/16/2023	DATE 12/9/2008	SHEET 1 OF 2