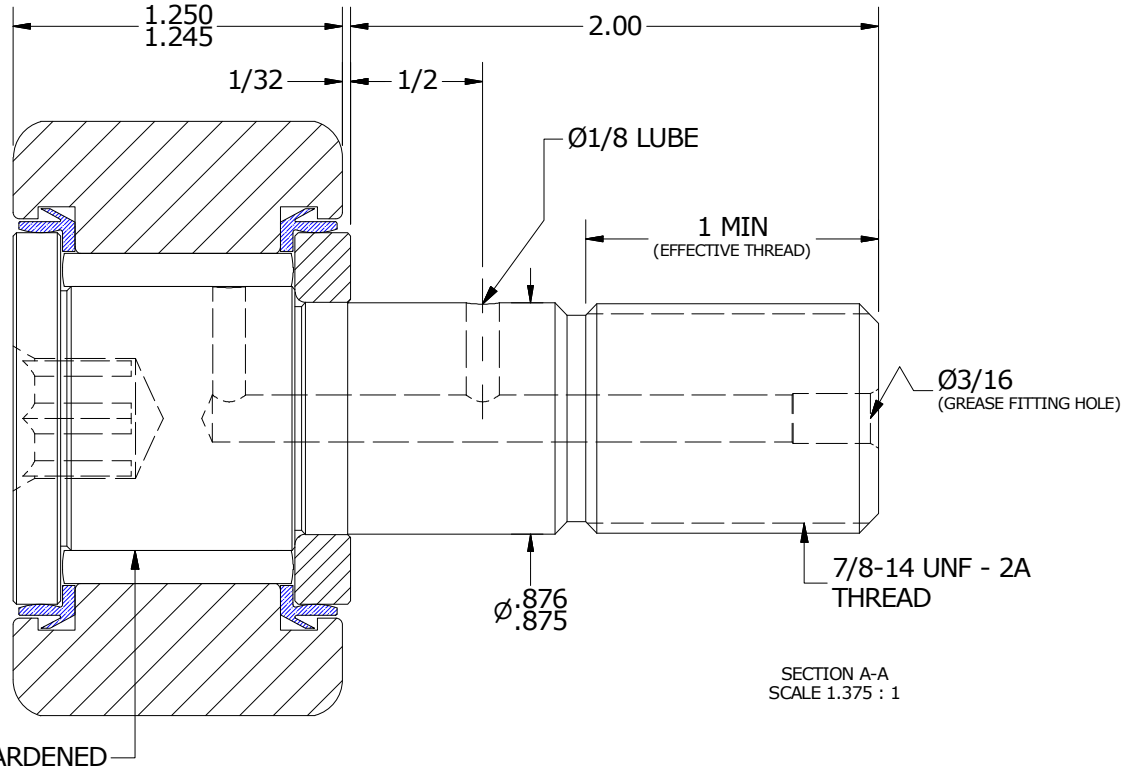
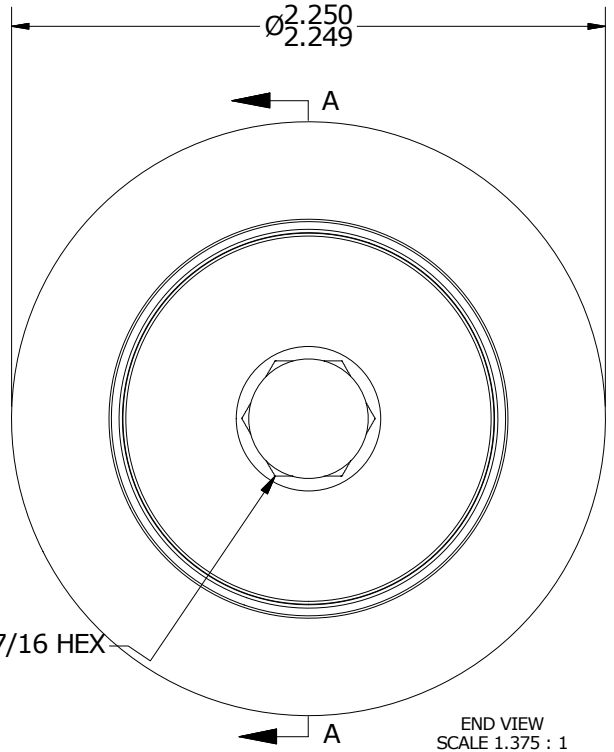
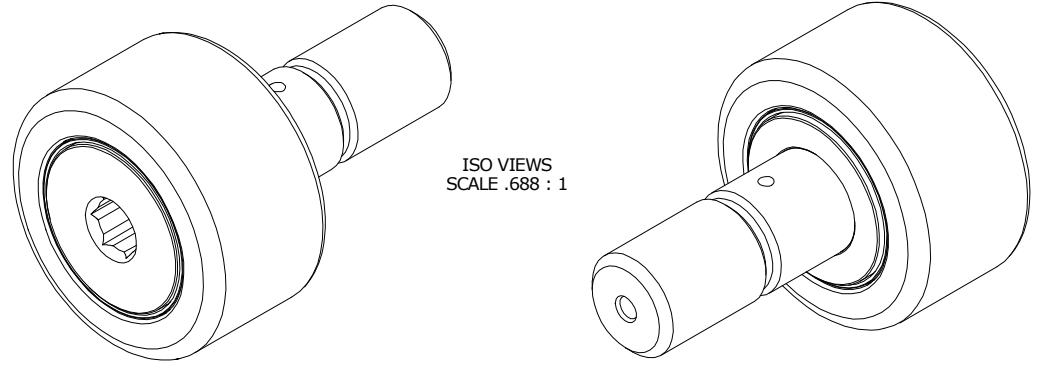


LOAD RATINGS		
RATING	lbf	Newtons
RADIAL BASIC DYNAMIC	6,472	28,789
MAXIMUM STATIC CAPACITY	8,456	37,614

RECOMMENDED MOUNTING HOLE Ø		
Limit	Inch	mm
MIN	.8750	22.2250
MAX	.8755	22.2377

- NOTES:
 1. BEARING IS PACKED WITH NLGI GRADE 2, FOOD GRADE H1 GREASE (UNLESS OTHERWISE SPECIFIED)
 2. LIMITING SPEED:
 A. GREASE = 1,400

MAXIMUM CLAMPING TORQUE		
Thread Type	Inch Lbs	Nm
DRY	1,500	169.5
LUBRICATED	750	84.7



MATERIAL NOTES:
 OUTER RING - 440C STAINLESS, HEAT TREATED
 STUD - 440C STAINLESS, ZONE HARDENED
 NEEDLE ROLLER(S) - 440C STAINLESS, HEAT TREATED
 WASHER - 440C STAINLESS, HEAT TREATED
 SEAL(S) - SYNTHETIC

CUSTOMER PART#	XX = ± .01 XXX = ± .005 XXXX = ± .0005 ANGLES = ± 1' INCH [METRIC] FRACTION = ± 1/32
ENGINEERING CHANGE ORDER NOTE	
REVISION BY	DATE
SGW	7/26/2018

CARTER MANUFACTURING IS NOT RESPONSIBLE FOR TYPOGRAPHICAL ERRORS	
REVISION	
B	AUTHOR BY
	HG
REVISION BY	DATE
SGW	7/26/2018

CARTER MANUFACTURING CO., INC. GRAND HAVEN, MICHIGAN 49417			
PART NAME: ASSEMBLY		PRODUCT TYPE: CNB / SC	
DRAWN BY	CHK'D BY	SALES	MATERIAL
GJP	MD	KR	NOTED
DATE	DATE	DATE	SHEET
11/5/1999	7/25/2018	7/25/2018	1 OF 2