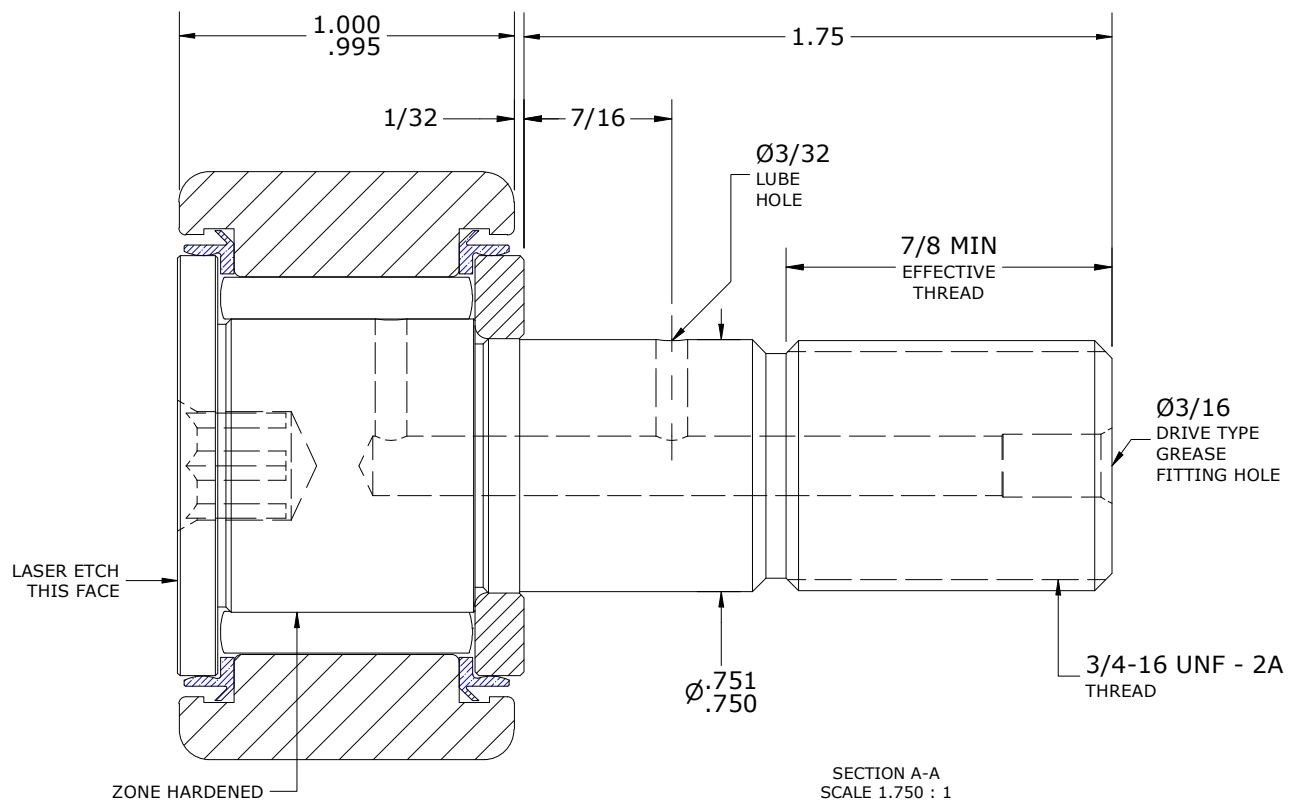
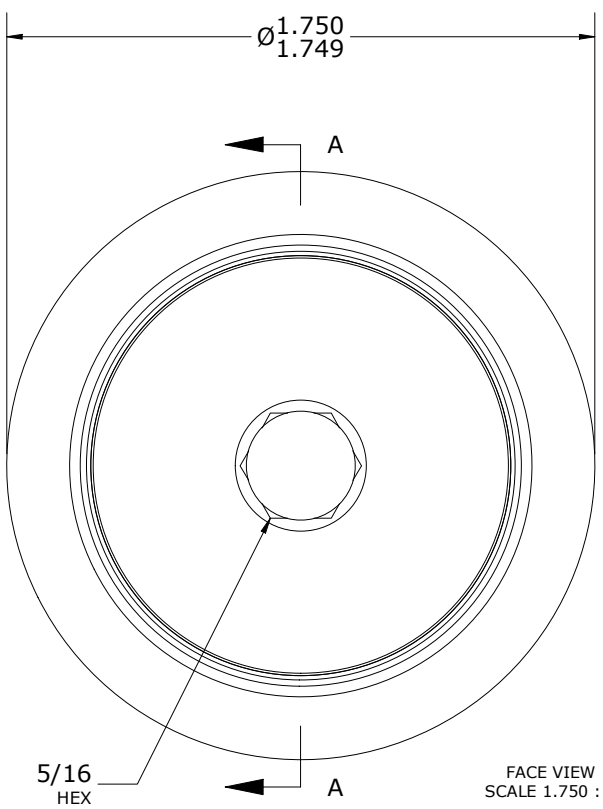
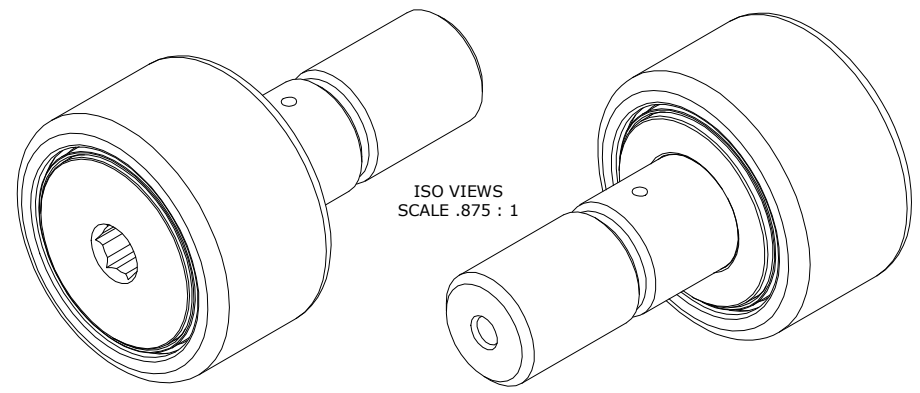


LOAD RATINGS		
RATING	lbf	Newtons
RADIAL BASIC DYNAMIC	5,730	25,488
MAXIMUM STATIC CAPACITY	6,000	26,689

- NOTES:
- BEARING IS PACKED WITH NLGI GRADE 2, FOOD GRADE H1 GREASE (UNLESS OTHERWISE SPECIFIED)
  - LIMITING SPEED:
    - A. GREASE = 2,200 RPM
  - CUSTOM LASER ETCHING AVAILABLE UPON REQUEST

RECOMMENDED MOUNTING HOLE Ø		
Limit	Inch	mm
MIN	.7500	19.0500
MAX	.7505	19.0627

MAXIMUM CLAMPING TORQUE**		
Thread Type	Inch lbf	Nm
LUBRICATED	625	70.6



\*\* (TORQUE SPECIFICATION IS BASED ON LUBRICATED THREADS, IF USING DRY THREADS DOUBLE TORQUE VALUE)

**MATERIAL NOTES:**

OUTER RING - 440C STAINLESS STEEL, HEAT TREATED

STUD - 440C STAINLESS STEEL, ZONE HARDENED

WASHER - 440C STAINLESS STEEL, HEAT TREATED

NEEDLE ROLLER(S) - 440C STAINLESS STEEL, HEAT TREATED

SEAL(S) - SYNTHETIC

CUSTOMER PART#	XX = ± .01 XXX = ± .005 XXXX = ± .0005 ANGLES = ± 2' INCH [METRIC] FRACTION = ± 1/64
<b>ENGINEERING CHANGE ORDER NOTE</b>	
CARTER STANDARD SURFACE FINISH IS MEASURED IN "Ra" UNITS UNLESS OTHERWISE SPECIFIED.	

CARTER MANUFACTURING IS NOT RESPONSIBLE FOR TYPOGRAPHICAL ERRORS				<b>CARTER MANUFACTURING CO., INC.</b> GRAND HAVEN, MICHIGAN 49417			
<b>REVISION</b>				PART NAME: ASSEMBLY		PRODUCT TYPE: Xtenda™	
<b>D</b>	AUTHOR BY HG	DRAWN BY AJH	CHK'D BY MD	SALES NC	MATERIAL NOTED		
REVISION BY DJB	DATE 8/22/2023	DATE 8/14/2001	DATE 8/22/2023	DATE 8/22/2023	SHEET 1 OF 2		