

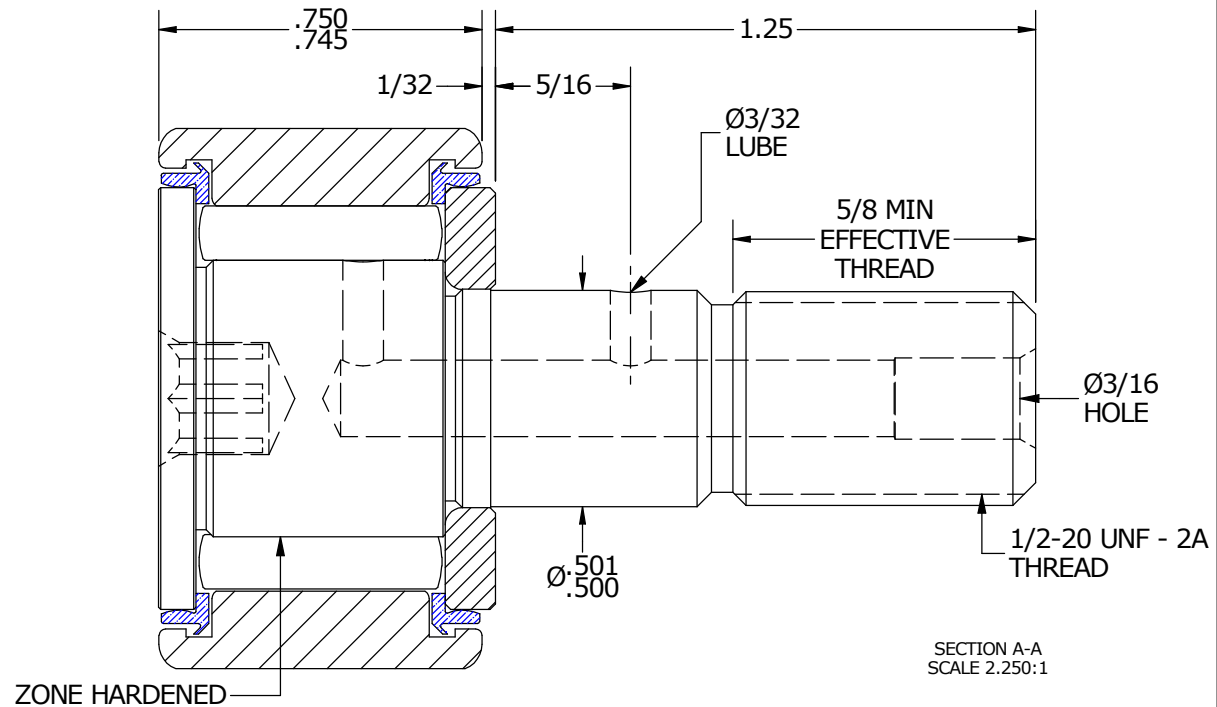
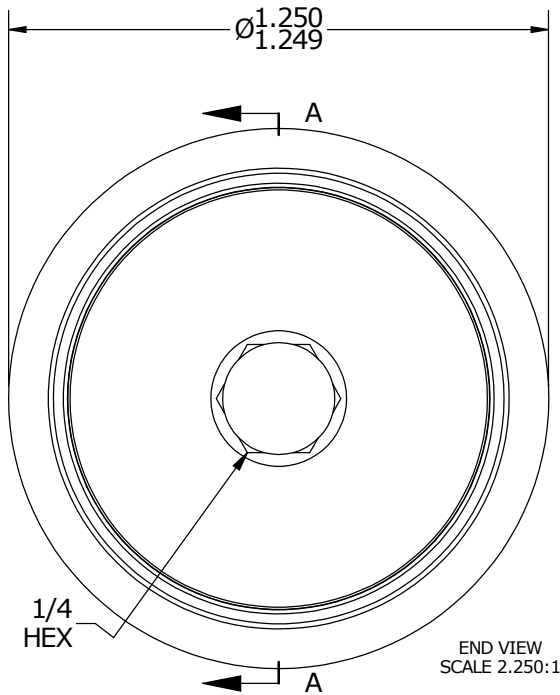
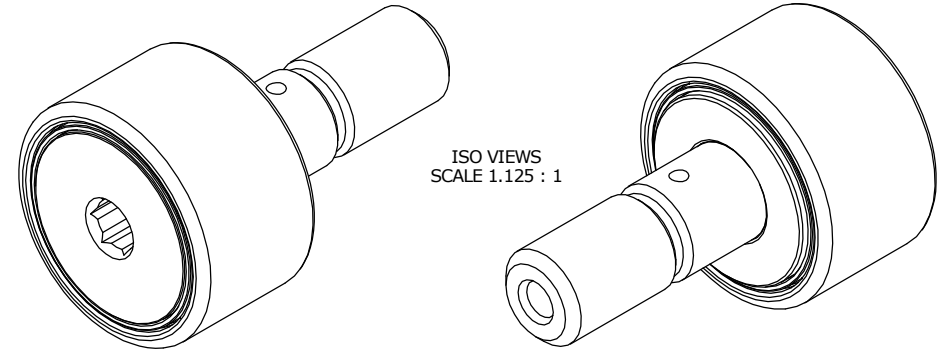
LOAD RATINGS		
RATING	lbf	Newtons
RADIAL BASIC DYNAMIC	3,530	15,702
MAXIMUM STATIC CAPACITY	2,300	10,231

RECOMMENDED MOUNTING HOLE Ø		
Limit	Inch	mm
MIN	.5000	12.7000
MAX	.5005	12.7130

MAXIMUM CLAMPING TORQUE		
Thread Type	Inch Lbs	Nm
DRY	350	40
LUBRICATED	175	20

NOTES:  
 1. BEARING IS PACKED WITH NLGI GRADE 2, FOOD GRADE H1 GREASE (UNLESS OTHERWISE SPECIFIED)

MS NO. \_\_\_\_\_ NSN NO. \_\_\_\_\_ DRAWING NO. SC-40-SB



**MATERIAL NOTES:**

OUTER RING - 440C STAINLESS STEEL, HEAT TREATED  
 STUD - 440C STAINLESS STEEL, ZONE HARDENED  
 NEEDLE ROLLER(S) - 440C STAINLESS STEEL, HEAT TREATED  
 WASHER - 440C STAINLESS STEEL, HEAT TREATED  
 SEAL(S) - SYNTHETIC

*CUSTOMER PART#*

XX = ± .01  
 XXX = ± .005  
 XXXX = ± .0005  
 ANGLES = ± 1'  
 INCH [METRIC]  
 FRACTION = ± 1/32

CARTER MANUFACTURING IS NOT RESPONSIBLE FOR TYPOGRAPHICAL ERRORS

**CARTER MANUFACTURING CO., INC.**  
 GRAND HAVEN, MICHIGAN 49417

*ENGINEERING CHANGE ORDER NOTE*

*REVISION*

PART NAME: ASSEMBLY

REVISION BY	DATE	DATE	DATE	DATE	SHEET
B	HG	AJH	MD	KR	NOTED
SGW	6/30/2016	8/13/2001	6/14/2016	7/15/2016	1 OF 2