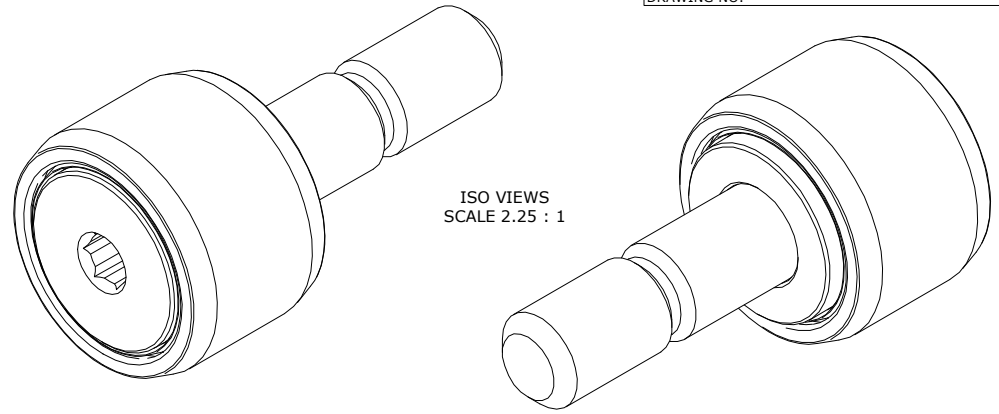


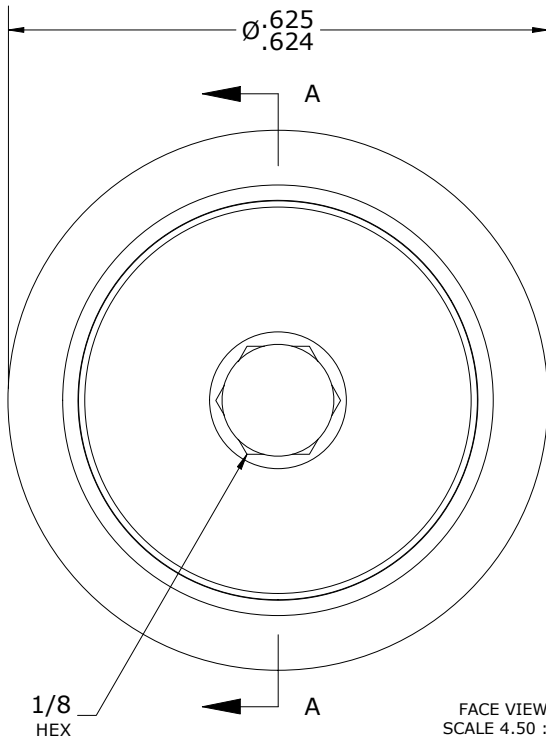
LOAD RATINGS		
RATING	lbf	Newtons
RADIAL BASIC DYNAMIC	860	3,825
MAXIMUM STATIC CAPACITY	600	2,669

NOTES:
 1. BEARING COMES PACKED WITH CARTER STANDARD
 FOOD GRADE H1, NLGI 2 GREASE

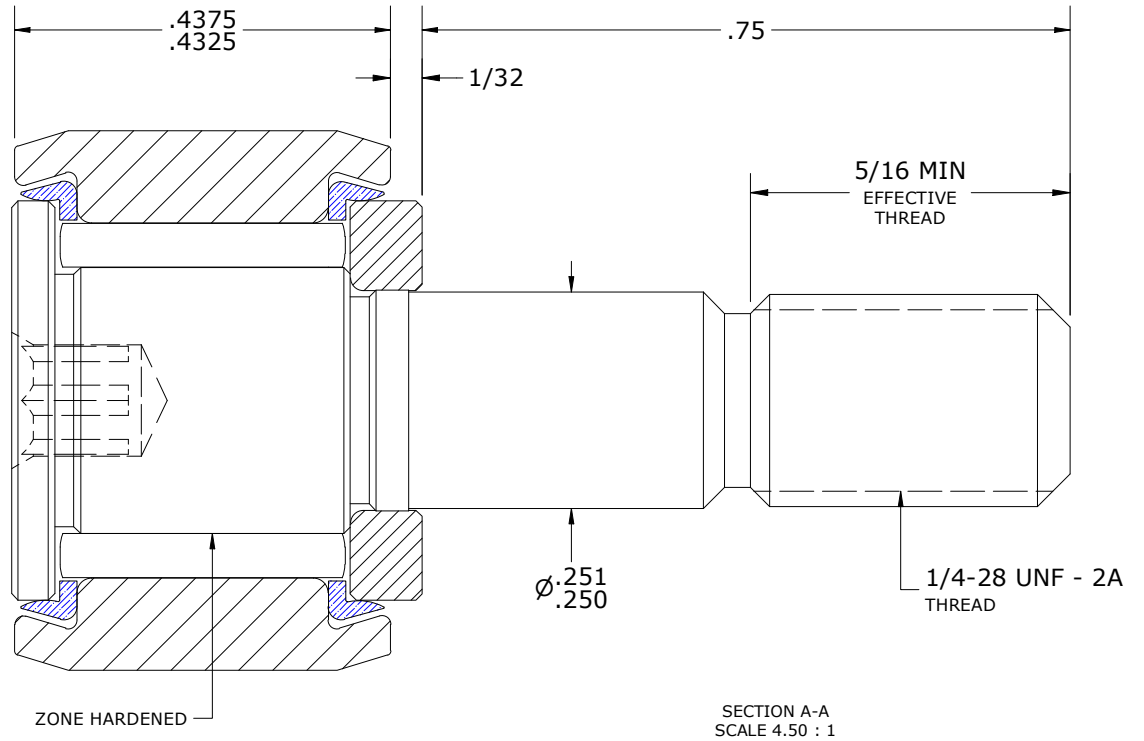
DRAWING NO. SC-20-SB



ISO VIEWS
 SCALE 2.25 : 1



FACE VIEW
 SCALE 4.50 : 1



SECTION A-A
 SCALE 4.50 : 1

MATERIAL NOTES:

- OUTER RING - 440C STAINLESS STEEL, HEAT TREATED
- STUD - 440C STAINLESS STEEL, ZONE HARDENED
- WASHER - 440C STAINLESS STEEL, HEAT TREATED
- NEEDLE ROLLER(S) - 440C STAINLESS STEEL, HEAT TREATED
- SEAL(S) - SYNTHETIC

CUSTOMER PART#

XX = ± .01
 XXX = ± .005
 XXXX = ± .0005
 ANGLES = ± 2'
 INCH [METRIC]
 FRACTION = ± 1/64

CARTER MANUFACTURING IS
 NOT RESPONSIBLE FOR
 TYPOGRAPHICAL ERRORS

CARTER MANUFACTURING CO., INC.

GRAND HAVEN, MICHIGAN 49417

ENGINEERING CHANGE ORDER NOTE

REVISION

PART NAME: ASSEMBLY

PRODUCT TYPE: Xtenda™,
 Standard CF/YR

D

AUTHOR BY

DRAWN BY

CHK'D BY

SALES

MATERIAL

HG

GJP

MD

KR

NOTED

CARTER STANDARD SURFACE FINISH IS
 MEASURED IN "Ra" UNITS UNLESS
 OTHERWISE SPECIFIED.

REVISION BY

DATE

DATE

DATE

DATE

SHEET

DJB

2/22/2024

10/11/1999

2/21/2024

1/22/2015

1 OF 2