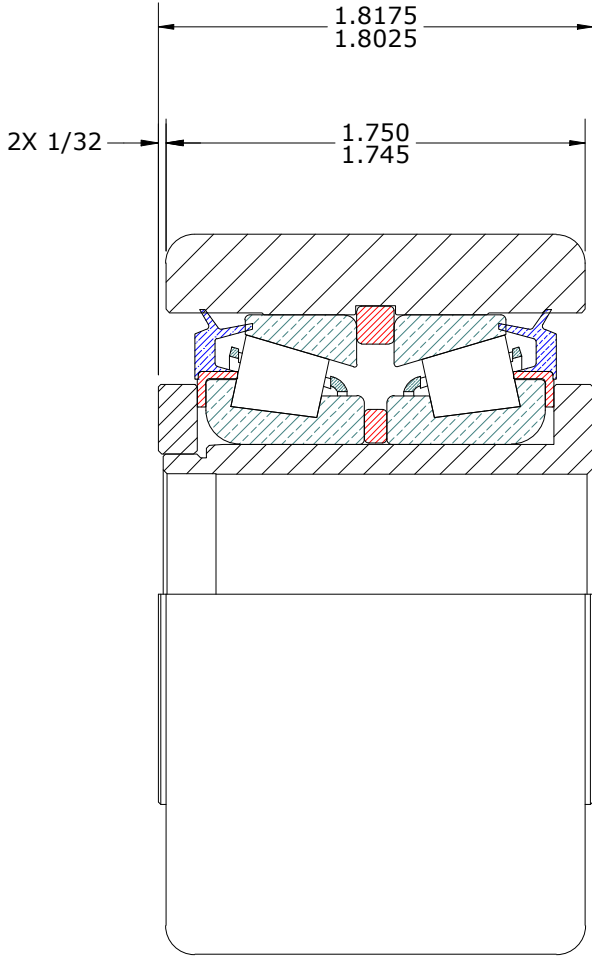
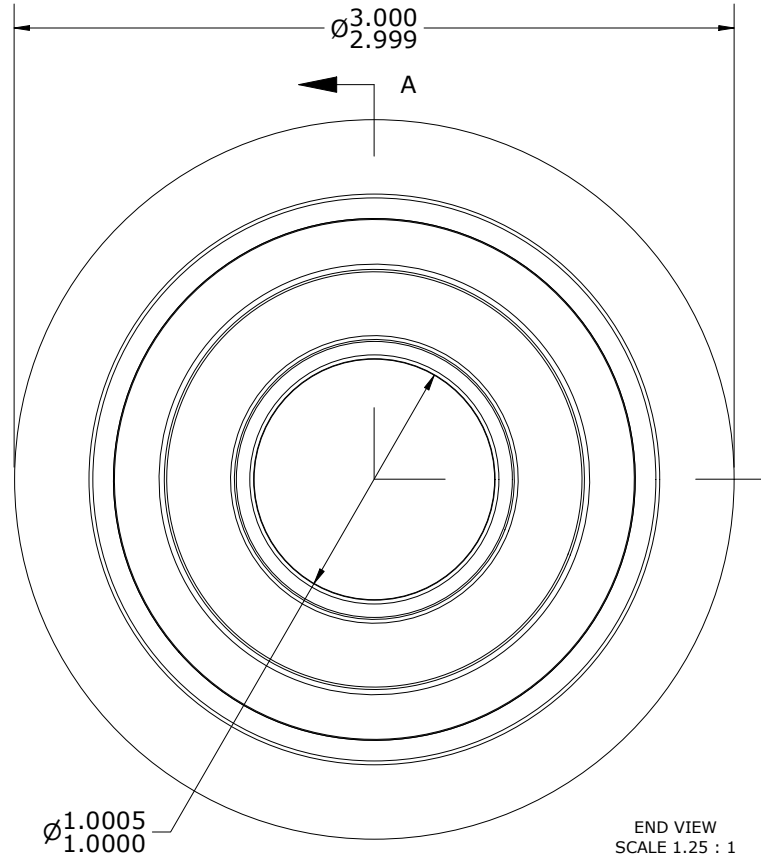
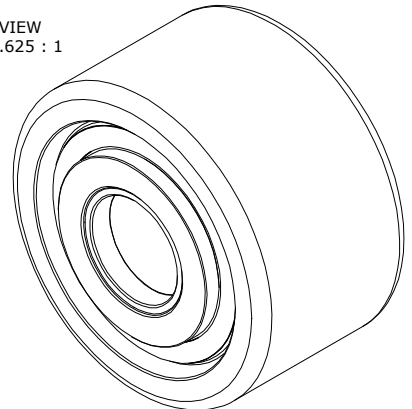


LOAD RATINGS	
RATING	Lbs
RADIAL BASIC DYNAMIC	14,270
STATIC THRUST LOAD	12,000
MAXIMUM STATIC CAPACITY	20,000

- NOTES:
1. BEARING IS PACKED WITH NLGI GRADE 2, LITHIUM BASED GREASE (UNLESS OTHERWISE SPECIFIED)
  2. OUTER ROLLER HOUSING, INNER RING & WASHER: ALL EXPOSED SURFACES HAVE BLACK OXIDE
  3. CUSTOM LASER ETCHING AVAILABLE UPON REQUEST

ISO VIEW  
SCALE .625 : 1



MATERIAL NOTES:

OUTER ROLLER HOUSING - BEARING STEEL, HEAT TREATED

INNER RING - STEEL

TAPERED SET - TIMKEN LM67000LA-902A2, EQUIVALENT

WASHER - STEEL

CUSTOMER PART#	XX = ± .01 XXX = ± .005 XXXX = ± .0005 ANGLES = ± 2' INCH [METRIC] FRACTION = ± 1/64
<b>ENGINEERING CHANGE ORDER NOTE</b>	
CARTER STANDARD SURFACE FINISH IS MEASURED IN "Ra" UNITS UNLESS OTHERWISE SPECIFIED.	

CARTER MANUFACTURING IS NOT RESPONSIBLE FOR TYPOGRAPHICAL ERRORS	
<b>REVISION</b>	
<b>D</b>	AUTHOR BY HG
REVISION BY DJB	DATE 1/23/2024

<b>CARTER MANUFACTURING CO., INC.</b> GRAND HAVEN, MICHIGAN 49417					
PART NAME: ASSEMBLY			PRODUCT TYPE: Hi-Rollers™		
DRAWN BY GJP	CHK'D BY MD	SALES NC	MATERIAL NOTED		
DATE 1/4/2001	DATE 1/23/2024	DATE 1/23/2024	SHEET 1 OF 2		