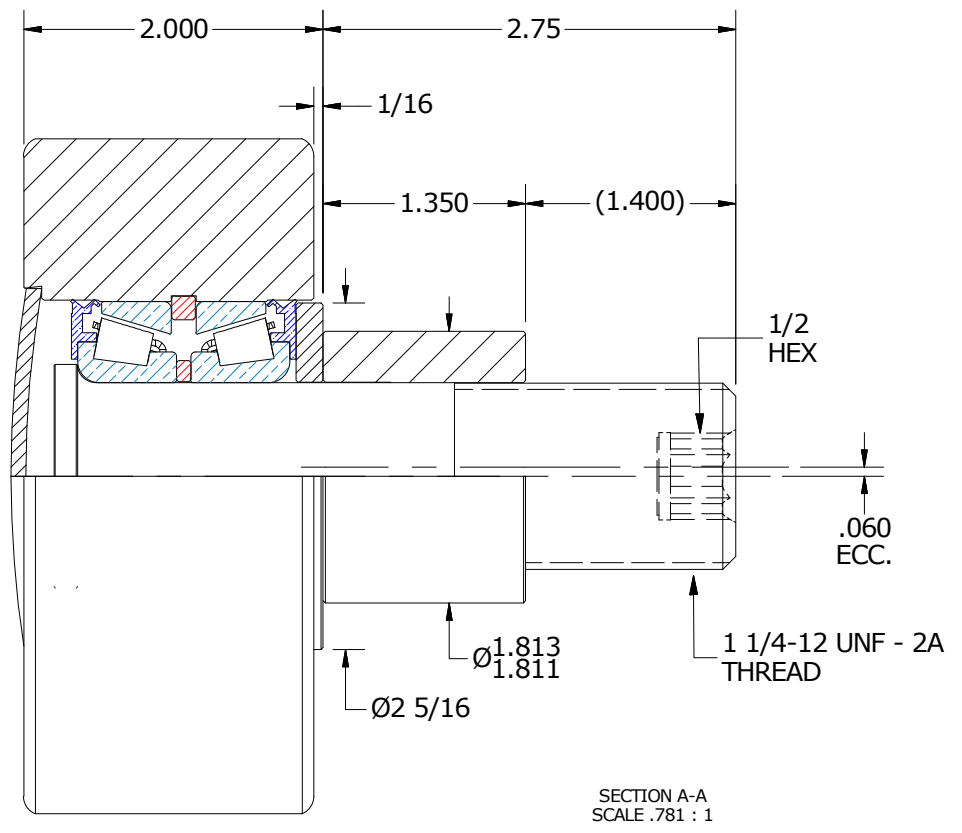
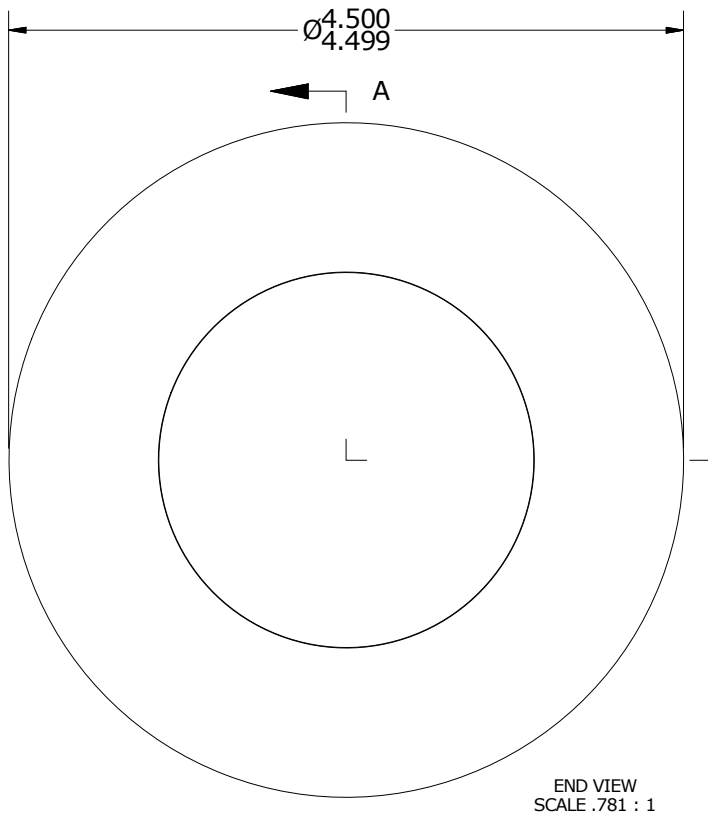
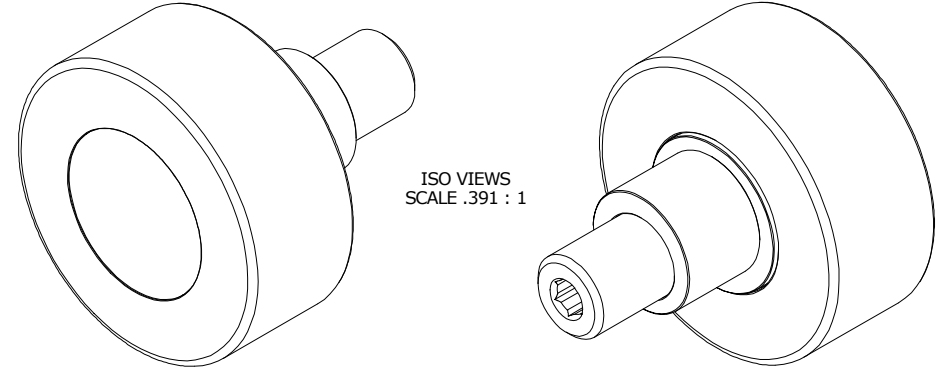


LOAD RATINGS	
RATING	Lbs
RADIAL BASIC DYNAMIC	14,200
DYNAMIC THRUST LOAD	13,000
MAXIMUM STATIC CAPACITY	26,000

MS NO. \_\_\_\_\_ NSN NO. \_\_\_\_\_ DRAWING NO. PHRE-450-A

- NOTES:  
 1. BEARING IS PACKED WITH NLGI GRADE 2, LITHIUM BASED GREASE  
 2. STUD & WASHER: ALL EXPOSED SURFACES HAVE BLACK OXIDE



MATERIAL NOTES:  
 OUTER ROLLER - BEARING STEEL, HEAT TREATED  
 STUD - COLD ROLLED STEEL  
 BEARING ASSY - LM67000LA-902A2  
 WASHER - COLD ROLLED STEEL  
 END CAP - COLD ROLLED STEEL  
 ECCENTRIC SLEEVE - COLD ROLLED STEEL

CUSTOMER PART# \_\_\_\_\_  
 XX = ± .01  
 XXX = ± .005  
 XXXX = ± .0005  
 ANGLES = ± 1'  
 INCH [METRIC]  
 FRACTION = ± 1/32

CARTER MANUFACTURING IS NOT RESPONSIBLE FOR TYPOGRAPHICAL ERRORS

**CARTER MANUFACTURING CO., INC.**  
 GRAND HAVEN, MICHIGAN 49417

ENGINEERING CHANGE ORDER NOTE

REVISION		PART NAME: ASSEMBLY				
<b>B</b>	AUTHOR BY	DRAWN BY	CHK'D BY	SALES	MATERIAL	
	HG	AJH	MD	KR	NOTED	
	REVISION BY	DATE	DATE	DATE	SHEET	
SGW	2/9/2017	12/5/2001	2/13/2017	2/9/2017	1 OF 2	