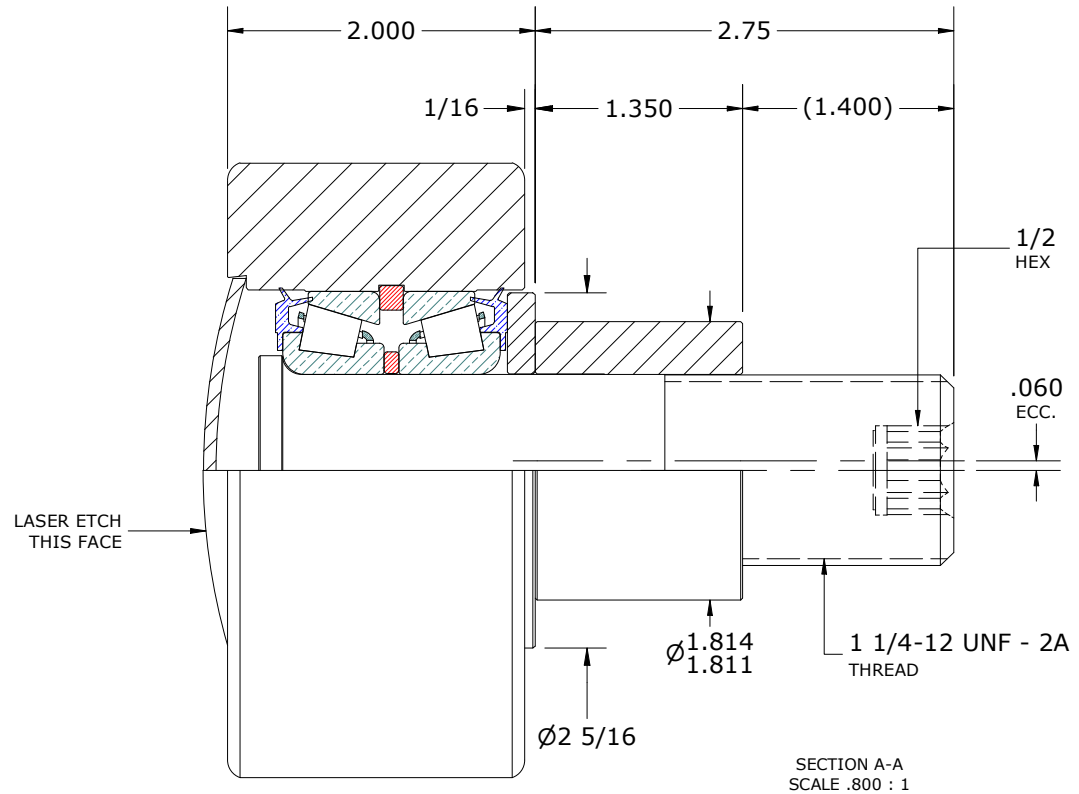
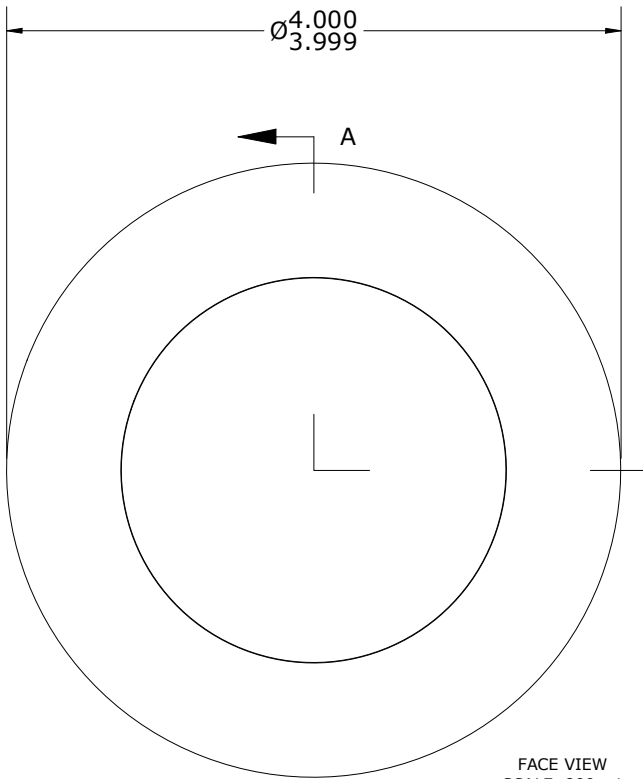
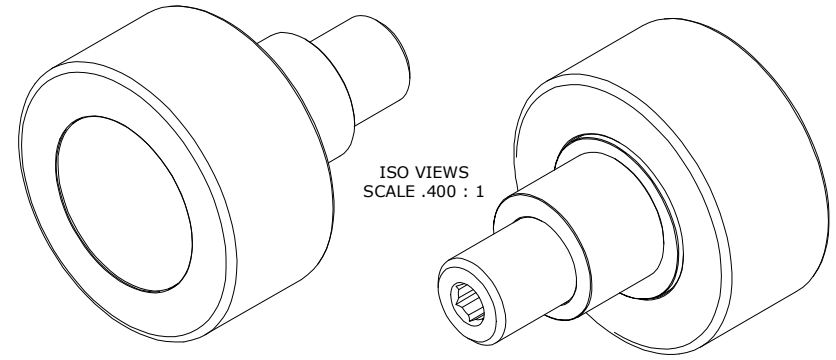


| LOAD RATINGS | |
|-------------------------|--------|
| RATING | Lbs |
| RADIAL BASIC DYNAMIC | 14,270 |
| STATIC THRUST LOAD | 12,000 |
| MAXIMUM STATIC CAPACITY | 20,000 |

- NOTES:
1. BEARING IS PACKED WITH NLGI GRADE 2, LITHIUM BASED GREASE UNLESS OTHERWISE SPECIFIED
 2. ALL EXPOSED SURFACES HAVE BLACK OXIDE
 3. CUSTOM LASER ETCHING AVAILABLE UPON REQUEST

DRAWING NO. PHRE-400-A



MATERIAL NOTES:

- OUTER RING - BEARING STEEL, HEAT TREATED
- STUD - STEEL
- BEARING ASSEMBLY - LM67000LA-902A2
- WASHER - STEEL
- END CAP - STEEL
- ECCENTRIC SLEEVE - STEEL

CUSTOMER PART#

XX = ± .01
 XXX = ± .005
 XXXX = ± .0005
 ANGLES = ± 2'
 INCH [METRIC]
 FRACTION = ± 1/64

CARTER MANUFACTURING IS NOT RESPONSIBLE FOR TYPOGRAPHICAL ERRORS

CARTER MANUFACTURING CO., INC.
 GRAND HAVEN, MICHIGAN 49417

ENGINEERING CHANGE ORDER NOTE

REVISION

PART NAME: ASSEMBLY

PRODUCT TYPE: Hi-Rollers™

C

AUTHOR BY

DRAWN BY

CHK'D BY

SALES

MATERIAL

HG

AJH

MD

KR

NOTED

CARTER STANDARD SURFACE FINISH IS MEASURED IN "Ra" UNITS UNLESS OTHERWISE SPECIFIED.

REVISION BY

DATE

DATE

DATE

DATE

SHEET

DJB

10/18/2023

12/5/2001

10/18/2023

7/13/2012

1 OF 2