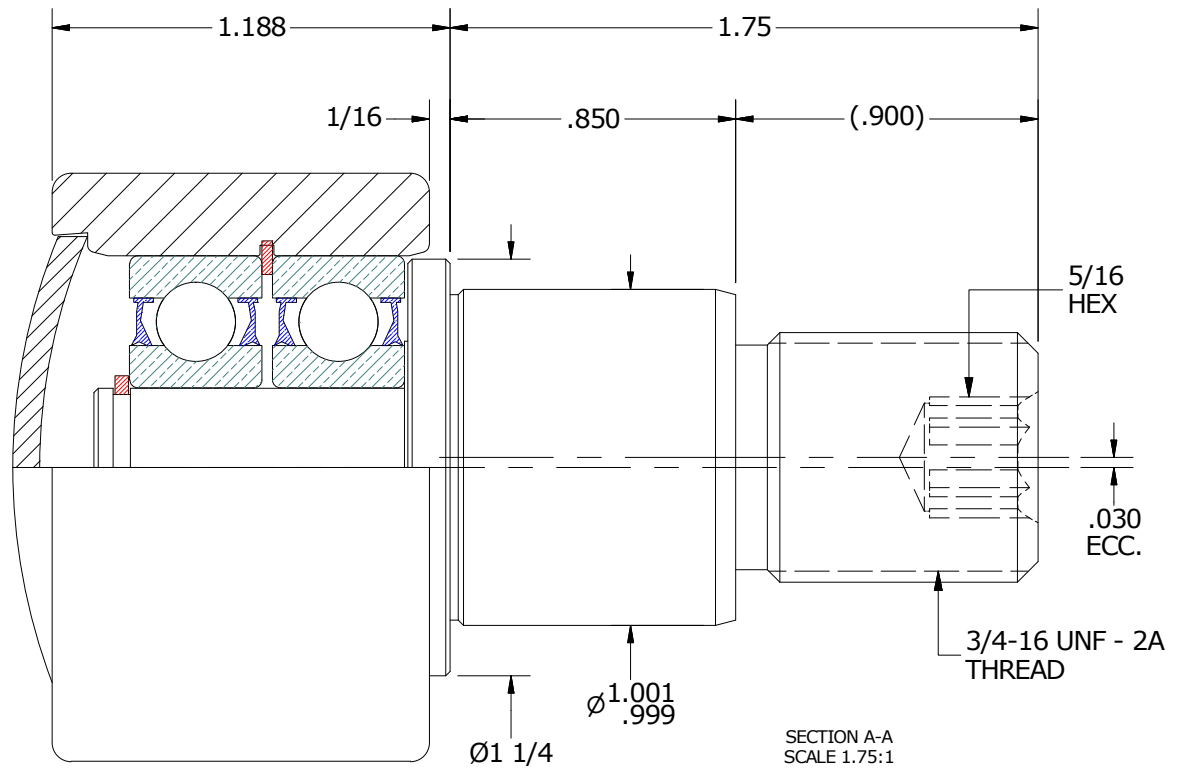
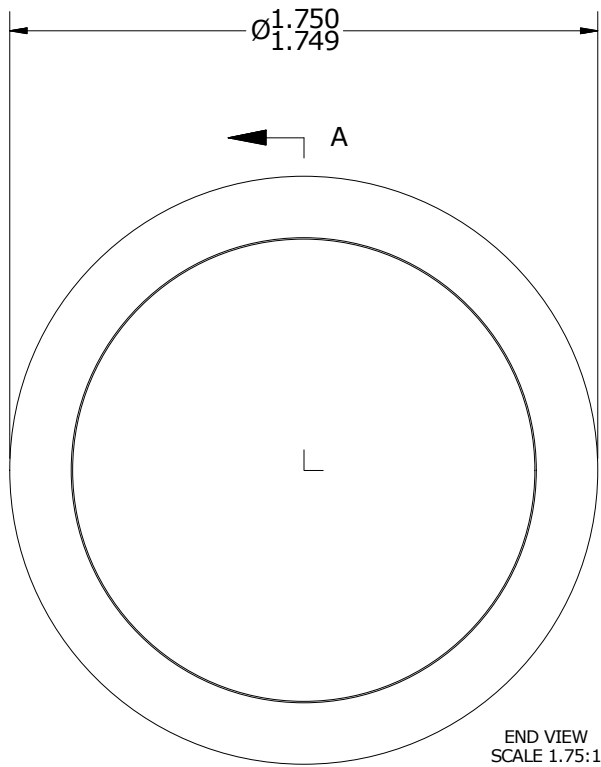
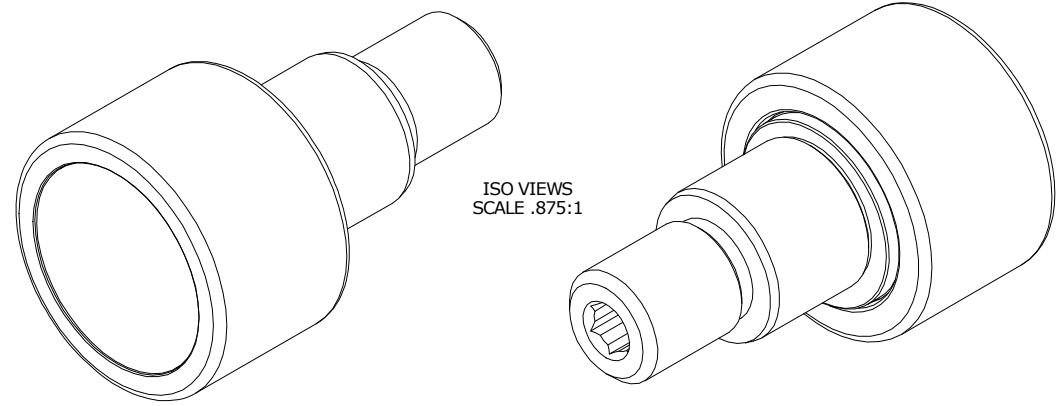


LOAD RATINGS	
RATING	Lbs
RADIAL BASIC DYNAMIC	2,380
DYNAMIC THRUST LOAD	1,880
MAXIMUM STATIC CAPACITY	1,300

- NOTES:  
 1. BALL BEARINGS COME PREPACKED WITH GREASE  
 2. STUD AND END CAP HAVE BLACK OXIDE ON ALL EXPOSED SURFACES

MS NO. NSN NO. DRAWING NO. PHRE-175-A



MATERIAL NOTES:

OUTER HOUSING - BEARING STEEL, HEAT TREATED  
 STUD - STRESSPROOF  
 END CAP - COLD ROLLED STEEL  
 BEARING ASSEMBLY(S) - 6201 2RS  
 RETAINING RINGS - SPRING STEEL

CUSTOMER PART#

XX = ± .01  
 XXX = ± .005  
 XXXX = ± .0005  
 ANGLES = ± 1'  
 INCH [METRIC]  
 FRACTION = ± 1/32

CARTER MANUFACTURING IS NOT RESPONSIBLE FOR TYPOGRAPHICAL ERRORS

**CARTER MANUFACTURING CO., INC.**  
 GRAND HAVEN, MICHIGAN 49417

ENGINEERING CHANGE ORDER NOTE

REVISION

PART NAME: ASSEMBLY

B

AUTHOR BY  
HG

DRAWN BY  
AJH

CHK'D BY  
MD

SALES  
KR

MATERIAL  
NOTED

REVISION BY  
SGW

DATE  
7/5/2017

DATE  
2/4/2003

DATE  
7/5/2017

DATE  
7/3/2017

SHEET  
1 OF 2