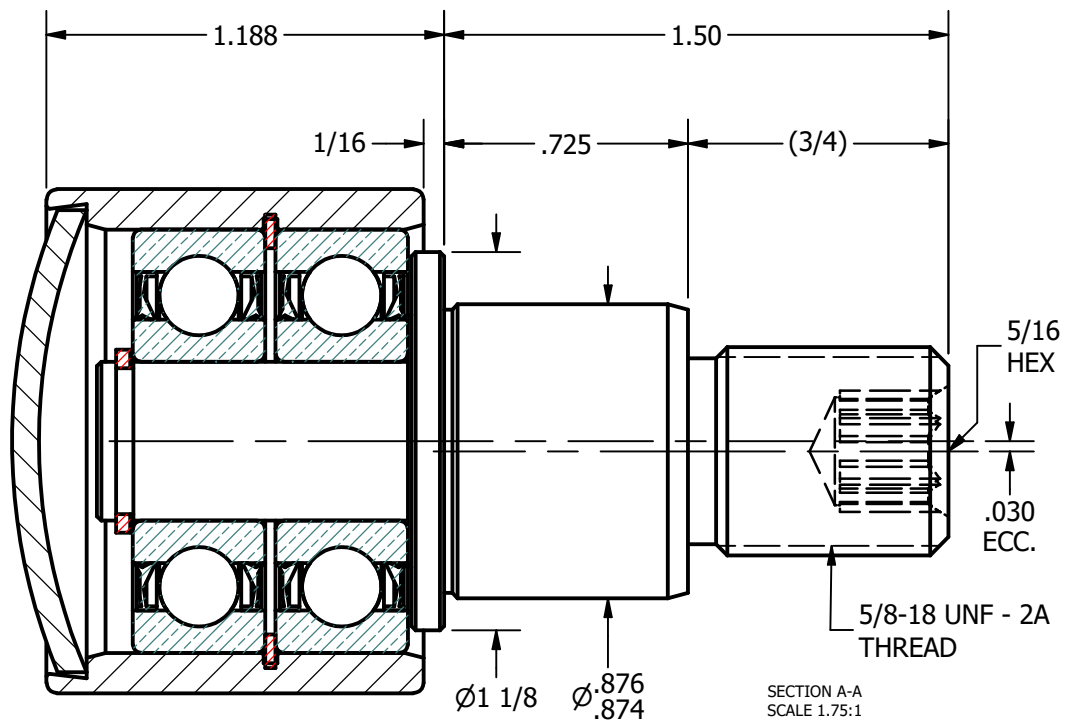
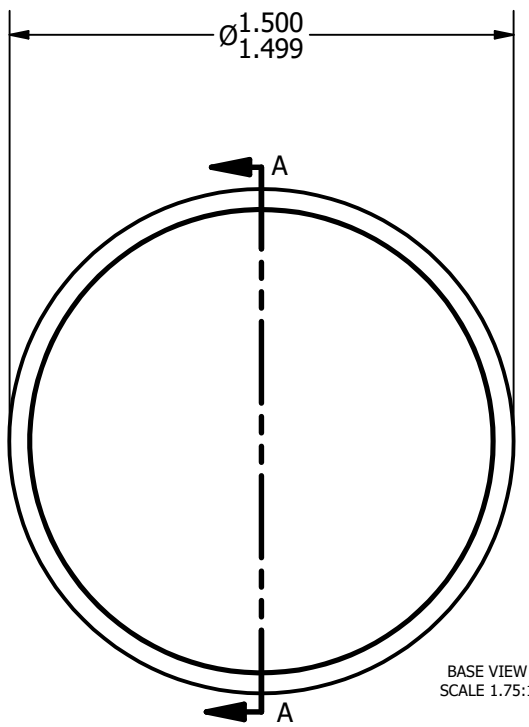
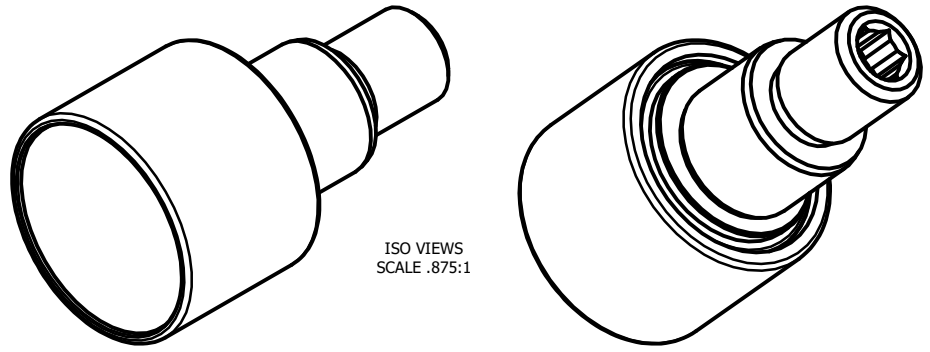


LOAD RATINGS	
RATING	Lbs
RADIAL BASIC DYNAMIC	2,300
DYNAMIC THRUST LOAD	1,880
MAXIMUM STATIC CAPACITY	1,300

NOTES:
 1. BALL BEARINGS COME PRE-PACKED WITH GREASE



MATERIAL NOTES:
 OUTER - BEARING STEEL, HEAT TREATED
 STUD - COLD ROLLED STEEL
 BALL BEARING - 6201-2RS, QTY [2]
 RETAINING RINGS, SPRING STEEL
 END CAP, COLD ROLLED STEEL

<i>CUSTOMER PART#</i> OSBORN# PLRE-1 1/2, McGill# PCFE 1 1/2 [2145100000]	.XX = ± .01 .XXX = ± .005 .XXXX = ± .0005 ANGLES = ± 1' INCH [METRIC]
CHANGE NOTE:	

CARTER MANUFACTURING IS NOT RESPONSIBLE FOR TYPOGRAPHICAL ERRORS	
REVISION	
A	<i>AUTHOR. BY</i> KPR
<i>REV. BY</i>	<i>DATE</i>
SGW	2/7/2007

CARTER MANUFACTURING CO., INC.					
GRAND HAVEN, MICHIGAN 49417					
PART NAME: ASSEMBLY			SHEET 1 OF 2		
<i>AUTHOR. BY</i>	<i>DRAWN BY</i>	<i>CHK'D BY</i>	<i>SALES</i>	<i>MATERIAL</i>	
KPR	SGW	KR	KPR	NOTED	
<i>REV. BY</i>	<i>DATE</i>	<i>DATE</i>	<i>DATE</i>	<i>DATE</i>	<i>DRAWING NO.</i>
SGW	2/7/2007	2/7/2007	2/7/2007	6/25/1997	PHRE-150-A