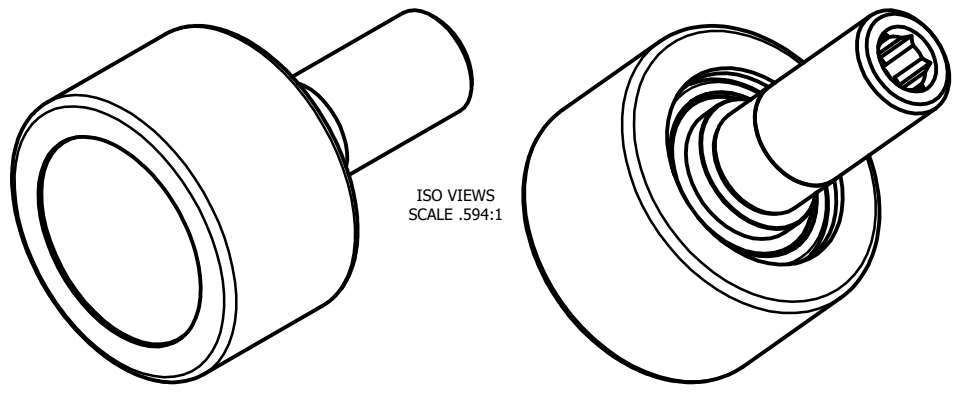


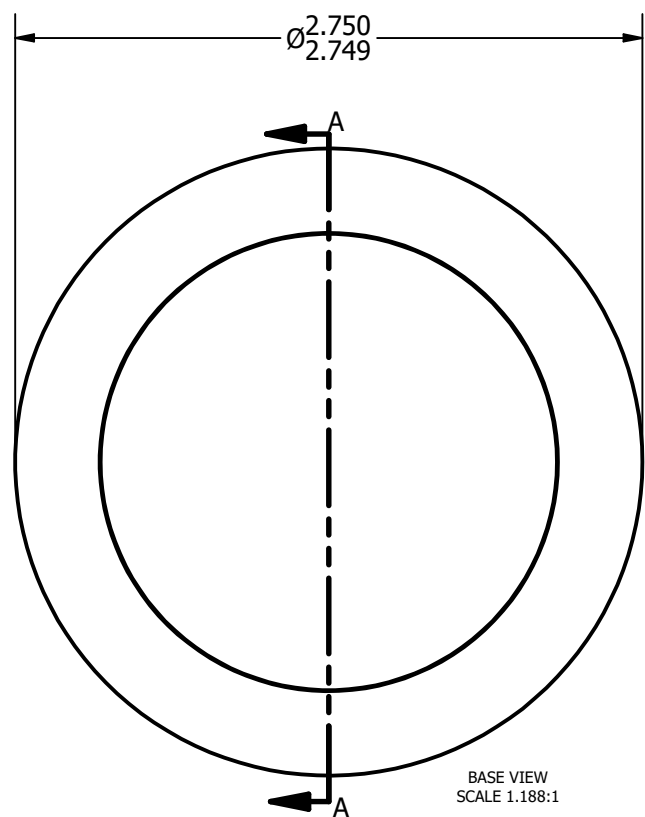
| LOAD RATINGS | |
|-------------------------|-------|
| RATING | Lbs |
| RADIAL BASIC DYNAMIC | 5,190 |
| DYNAMIC THRUST LOAD | 2,660 |
| MAXIMUM STATIC CAPACITY | 2,220 |

NOTES:
1. BALL BEARINGS COME PRE-PACKED WITH GREASE

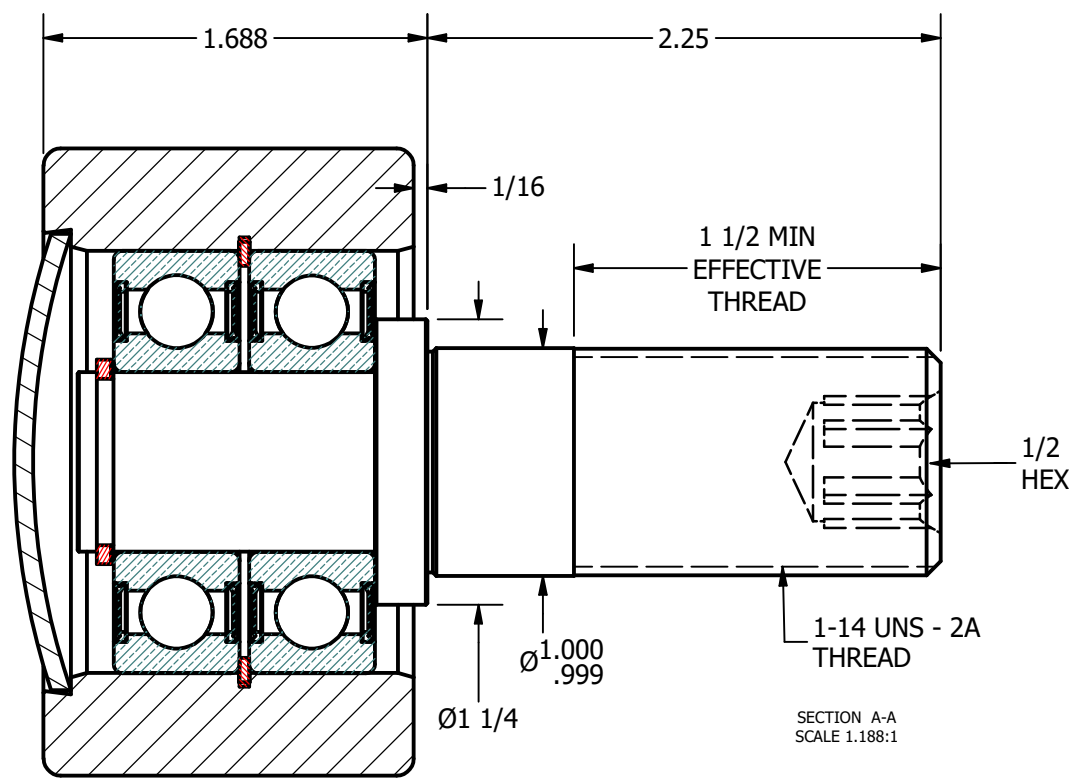
W/SV NO. _____ DRAWING NO. **PHR-275-A**



ISO VIEWS
SCALE .594:1



BASE VIEW
SCALE 1.188:1



SECTION A-A
SCALE 1.188:1

MATERIAL NOTES:
 OUTER - BEARING STEEL, HEAT TREATED
 STUD - COLD ROLLED STEEL
 END CAP - COLD ROLLED STEEL
 BEARING ASSEMBLY - 6204-2RS
 RETAINING RINGS - SPRING STEEL

| | |
|----------------|---|
| CUSTOMER PART# | .XX = ± .01 .XXX = ± .005 .XXXX = ± .0005 ANGLES = ± 1° INCH [METRIC] |
| CHANGE NOTE: | |

CARTER MANUFACTURING IS NOT RESPONSIBLE FOR TYPOGRAPHICAL ERRORS

| REVISION | |
|----------------|--------------------------|
| A | AUTHOR. BY KPR |
| REV. BY | DATE 2/7/2007 |

CARTER MANUFACTURING CO., INC.
 GRAND HAVEN, MICHIGAN 49417

| PART NAME: ASSEMBLY | | | | | SHEET 1 OF 2 |
|---------------------|----------|----------|----------|----------|--------------|
| AUTHOR. BY | DRAWN BY | CHK'D BY | SALES | MATERIAL | DRAWING NO. |
| KPR | SGW | KR | KPR | NOTED | PHR-275-A |
| DATE | DATE | DATE | DATE | | |
| 2/7/2007 | 2/6/2007 | 2/7/2007 | 2/7/2007 | | |