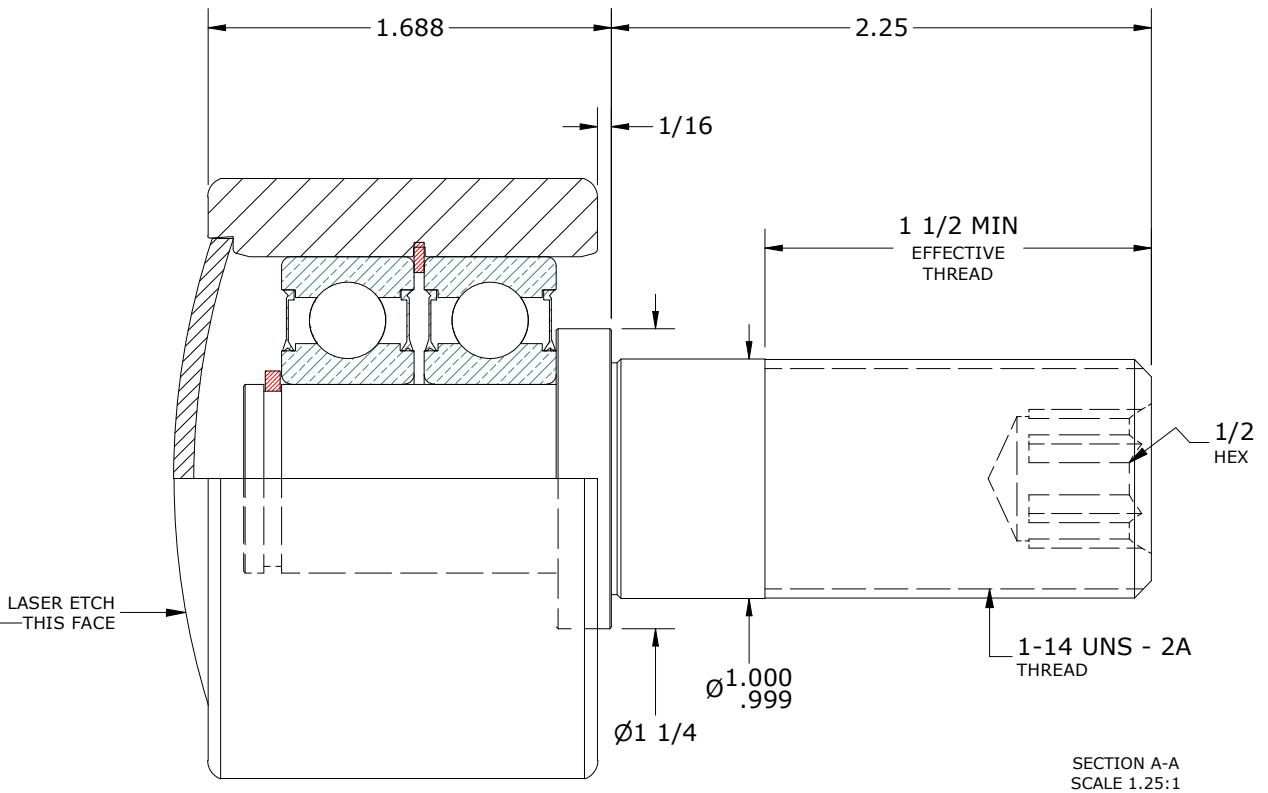
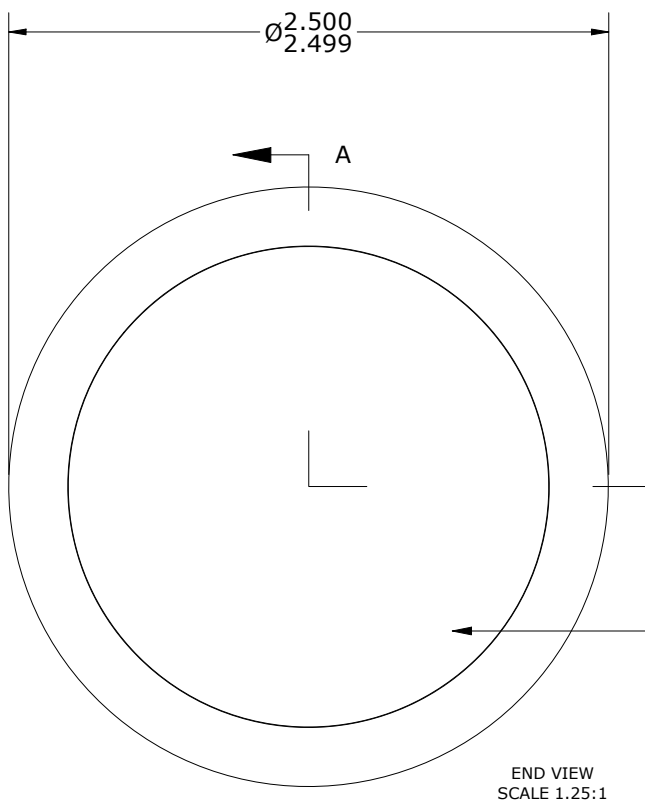
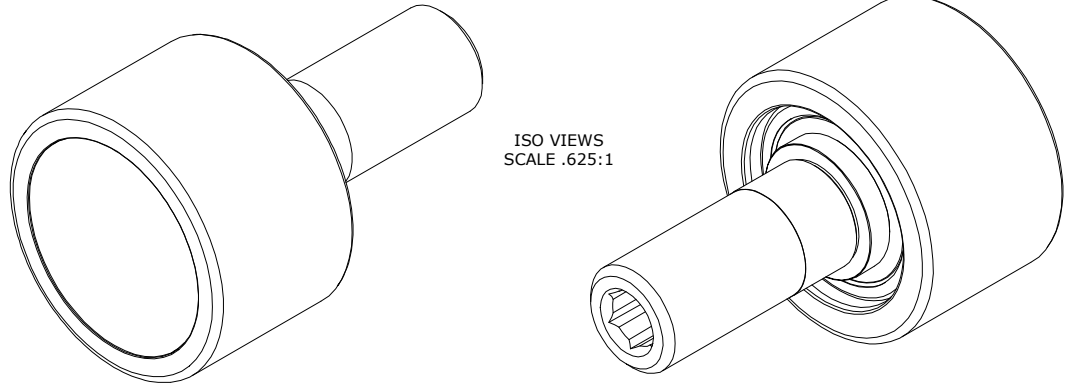


LOAD RATINGS	
RATING	Lbs
RADIAL BASIC DYNAMIC	5,190
STATIC THRUST LOAD	1,400
MAXIMUM STATIC CAPACITY	2,270

- NOTES:
1. BALL BEARING COME PRE-PACKED WITH GREASE.
  2. ALL STEEL COMPONENTS HAVE BLACK OXIDE FINISH ON ALL EXPOSED SURFACES
  3. CUSTOM LASER ETCHING IS AVAILABLE UPON REQUEST

MS NO. \_\_\_\_\_ NSN NO. \_\_\_\_\_ DRAWING NO. PHR-250-A



MATERIAL NOTES:  
 OUTER - BEARING STEEL, HEAT TREATED  
 STUD - STEEL  
 END CAP - STEEL  
 BEARING ASSEMBLY - 6204 2RS  
 RETAINING RINGS - SPRING STEEL

CUSTOMER PART# \_\_\_\_\_  
 XX = ± .01  
 XXX = ± .005  
 XXXX = ± .0005  
 ANGLES = ± 1'  
 INCH [METRIC]  
 FRACTION = ± 1/32

**ENGINEERING CHANGE ORDER NOTE**

CARTER MANUFACTURING IS NOT RESPONSIBLE FOR TYPOGRAPHICAL ERRORS

**CARTER MANUFACTURING CO., INC.**  
 GRAND HAVEN, MICHIGAN 49417

REVISION		PART NAME: ASSEMBLY		PRODUCT TYPE: PHR	
<b>A</b>	AUTHOR BY KPR	DRAWN BY SGW	CHK'D BY KR	SALES KPR	MATERIAL NOTED
REVISION BY SGW	DATE 2/7/2007	DATE 4/14/2009	DATE 2/7/2007	DATE 2/7/2007	SHEET 1 OF 2