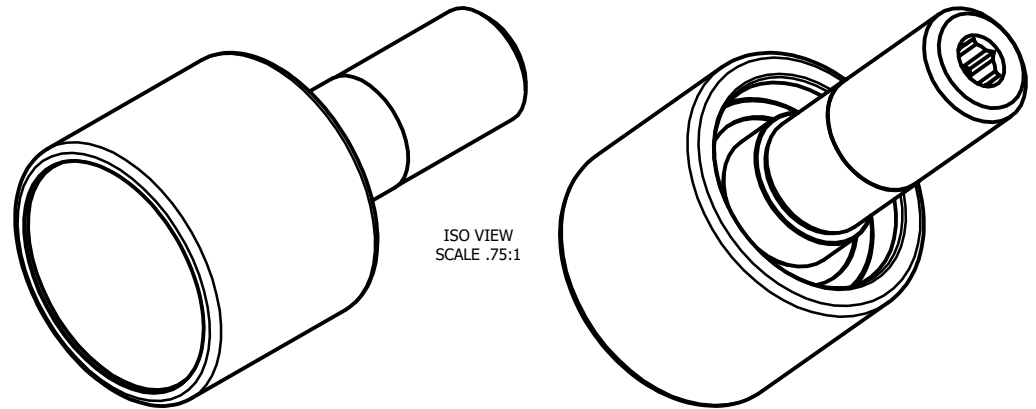
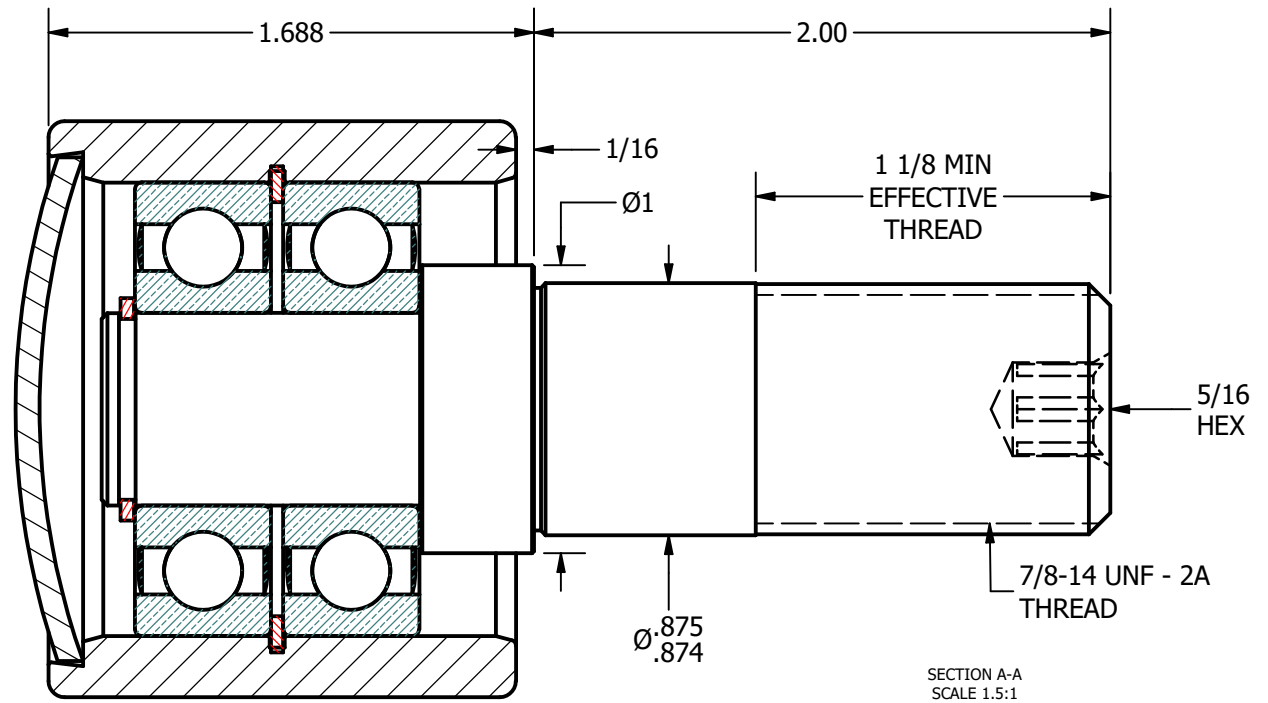
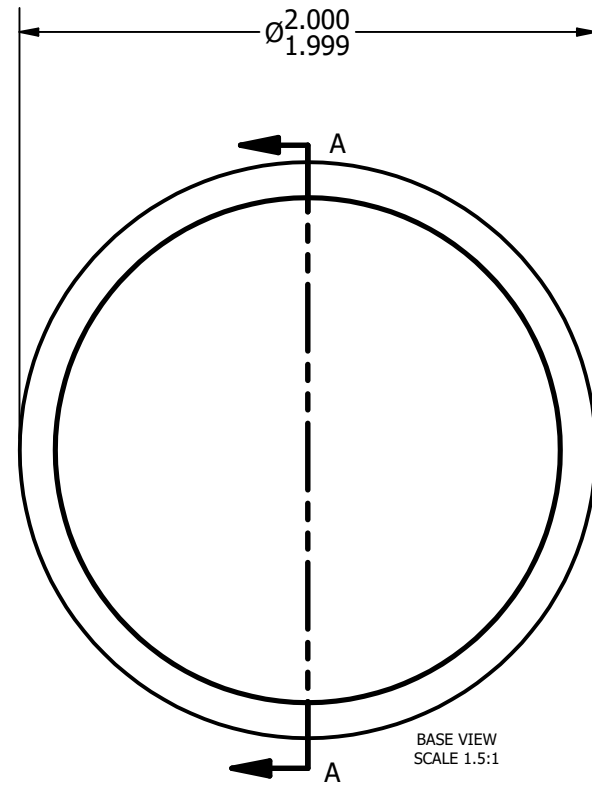


LOAD RATINGS	
RATING	Lbs
RADIAL BASIC DYNAMIC	3,830
STATIC THRUST LOAD	1,000
MAXIMUM STATIC CAPACITY	1,620

NOTES:
1. BALL BEARINGS COME PRE-PACKED WITH GREASE



ISO VIEW
SCALE .75:1



MATERIAL NOTES:
 OUTER - BEARING STEEL, HEAT TREATED
 STUD - STRESSPROOF
 END CAP - COLD ROLLED STEEL
 BEARING ASSEMBLIES - 62032RS
 RETAINING RINGS - SPRING STEEL

CUSTOMER PART#	.XX = ± .01 .XXX = ± .005 .XXXX = ± .0005 ANGLES = ± 1° INCH [METRIC]
CHANGE NOTE:	

CARTER MANUFACTURING IS NOT RESPONSIBLE FOR TYPOGRAPHICAL ERRORS	
REVISION	
B	AUTHOR. BY
SGW	KLP
REV. BY	DATE
MD	6/16/2009

CARTER MANUFACTURING CO., INC.					
GRAND HAVEN, MICHIGAN 49417					
PART NAME: ASSEMBLY			SHEET 1 OF 2		
SALES	MATERIAL	CHK'D BY	DRAWN BY	AUTHOR. BY	REV. BY
KR	NOTED	SGW	KLP	SGW	MD
DATE	DRAWING NO.	DATE	DATE	DATE	DATE
6/16/2009	PHR-200-A	6/16/2009	9/30/1996	6/16/2009	6/16/2009