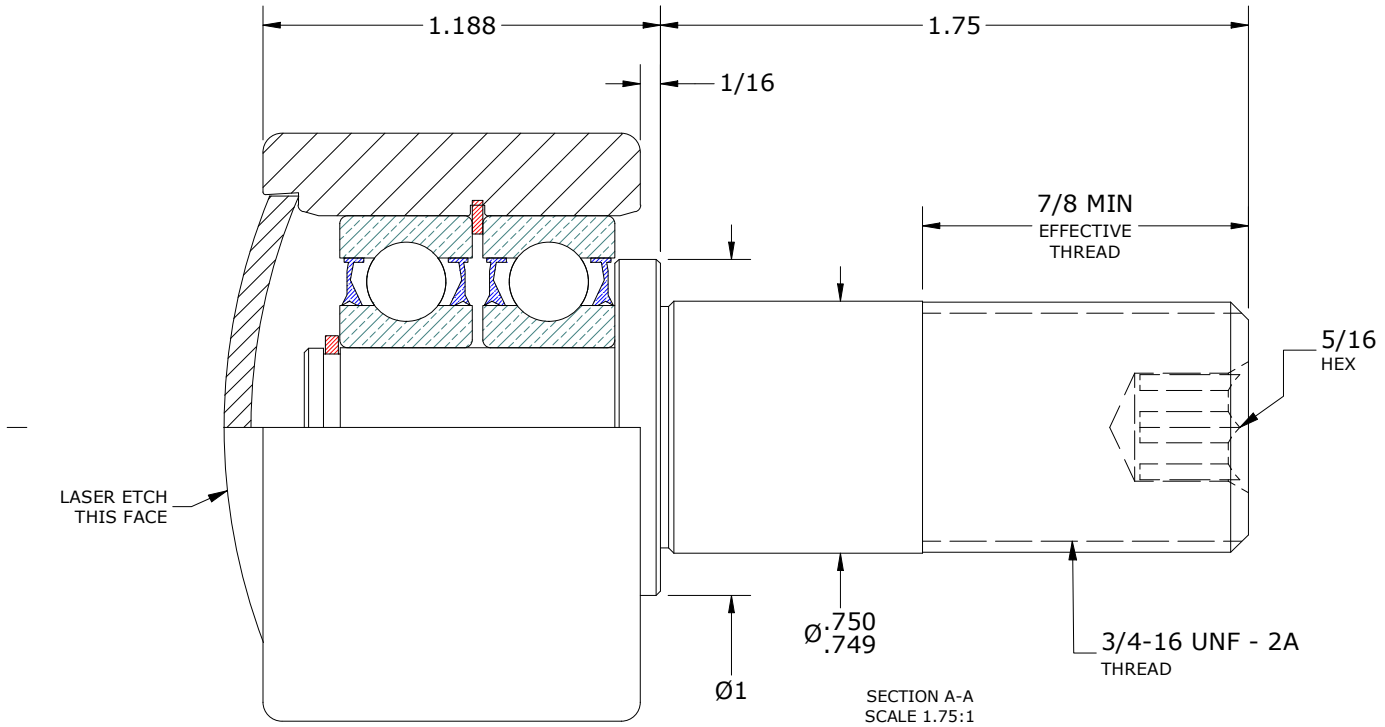
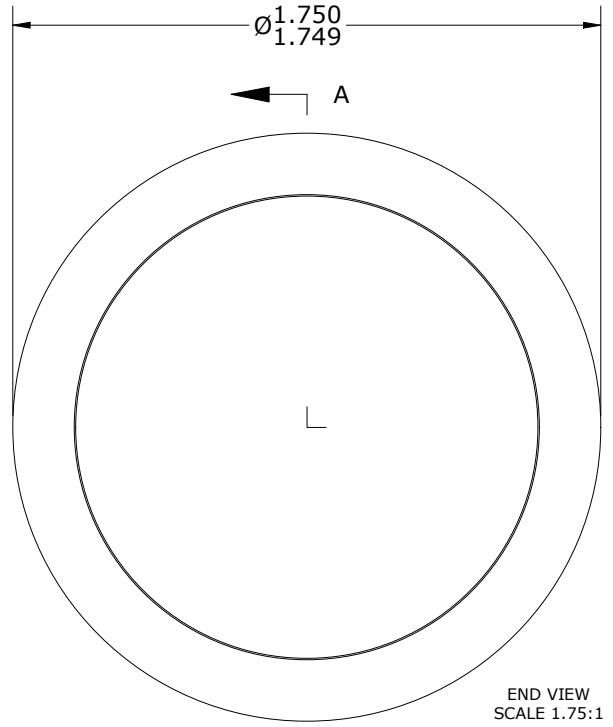
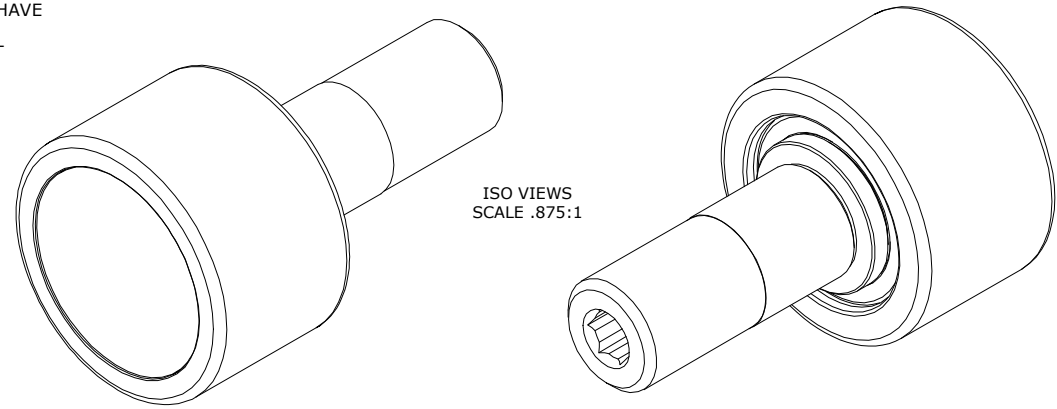


LOAD RATINGS		
RATING	lbf	Newtons
RADIAL BASIC DYNAMIC	2,760	12,277
STATIC THRUST LOAD	680	3,025
MAXIMUM STATIC CAPACITY	1,100	4,893

- NOTES:
1. BALL BEARINGS COME PREPACKED WITH GREASE.
 2. STUD, OUTER & END CAP: ALL EXPOSED SURFACES HAVE BLACK OXIDE.
 3. CUSTOM LASER ETCHING AVAILABLE UPON REQUEST

MS NO. _____ NSN NO. _____ DRAWING NO. PHR-175-A



MATERIAL NOTES:

OUTER ROLLER HOUSING - BEARING STEEL, HEAT TREATED
 STUD - STEEL
 END CAP - STEEL
 BEARING ASSEMBLY(S) - 6201 2RS
 RETAINING RINGS - SPRING STEEL

CUSTOMER PART#

XX = ± .01
 XXX = ± .005
 XXXX = ± .0005
 ANGLES = ± 1'
 INCH [METRIC]
 FRACTION = ± 1/32

ENGINEERING CHANGE ORDER NOTE

CARTER MANUFACTURING IS NOT RESPONSIBLE FOR TYPOGRAPHICAL ERRORS

CARTER MANUFACTURING CO., INC.
 GRAND HAVEN, MICHIGAN 49417

REVISION		PART NAME: ASSEMBLY			PRODUCT TYPE: PHR	
C	AUTHOR BY HG	DRAWN BY RAM	CHK'D BY MD	SALES NC	MATERIAL NOTED	
REVISION BY SGW	DATE 3/19/2021	DATE 12/27/1996	DATE 3/19/2021	DATE 3/19/2021	SHEET 1 OF 2	