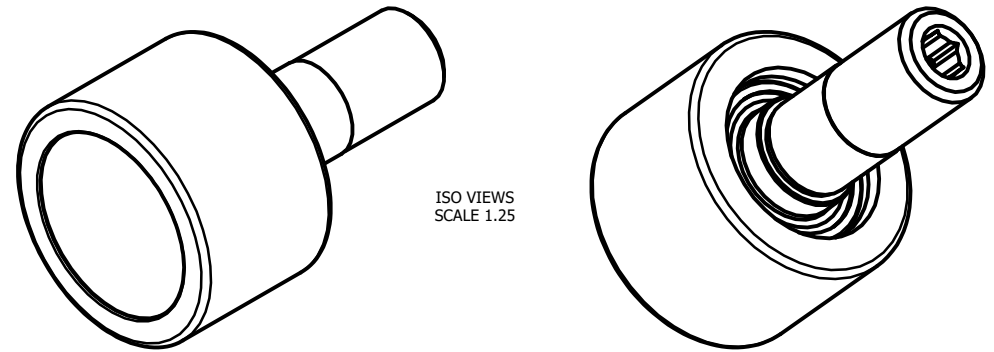


LOAD RATINGS	
RATING	Lbs
RADIAL BASIC DYNAMIC	630
DYNAMIC THRUST LOAD	140
MAXIMUM STATIC CAPACITY	230

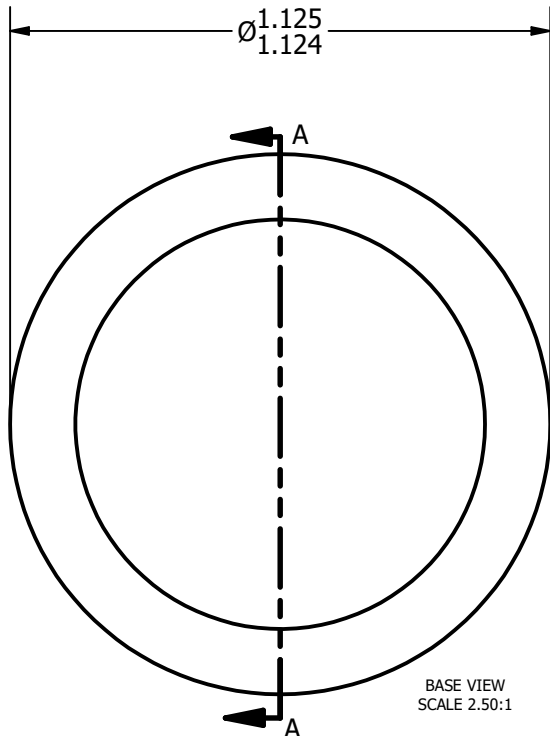
NOTES:
1. BALL BEARINGS COME PRE-PACKED WITH GREASE

WSN NO.

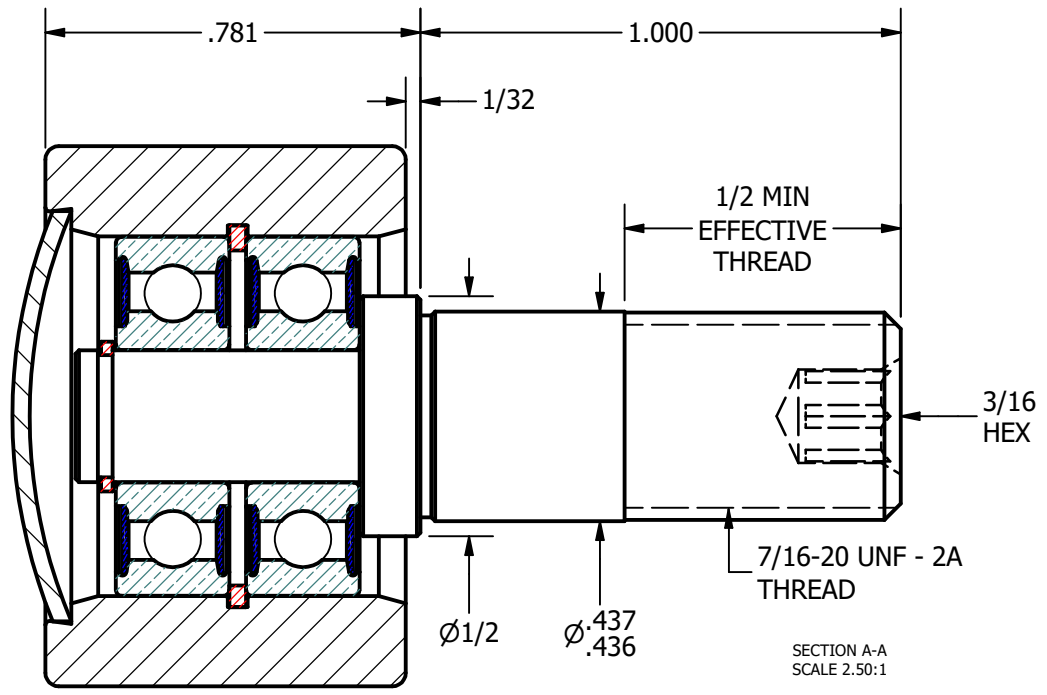
DRAWING NO. PHR-112-A



ISO VIEWS
SCALE 1.25



BASE VIEW
SCALE 2.50:1



SECTION A-A
SCALE 2.50:1

MATERIAL NOTES:
 OUTER - BEARING STEEL, HEAT TREATED
 STUD - COLD ROLLED STEEL
 BEARING ASSY. - 607.2RS
 SNAP RINGS - SPRING STEEL
 END CAP - COLD ROLLED STEEL

CUSTOMER PART#	.XX = ± .01 .XXX = ± .005 .XXXX = ± .0005 ANGLES = ± 1' INCH [METRIC]
CHANGE NOTE:	

CARTER MANUFACTURING IS NOT RESPONSIBLE FOR TYPOGRAPHICAL ERRORS

CARTER MANUFACTURING CO., INC.
 GRAND HAVEN, MICHIGAN 49417

REVISION		PART NAME: ASSEMBLY			SHEET 1 OF 2	
A	AUTHOR. BY	DRAWN BY	CHK'D BY	SALES	MATERIAL	
	DB	SGW	MD	KR	NOTED	
REV. BY	DATE	DATE	DATE	DATE	DRAWING NO.	
SGW	3/24/2009	3/2/2009	3/24/2009	3/16/2009	PHR-112-A	