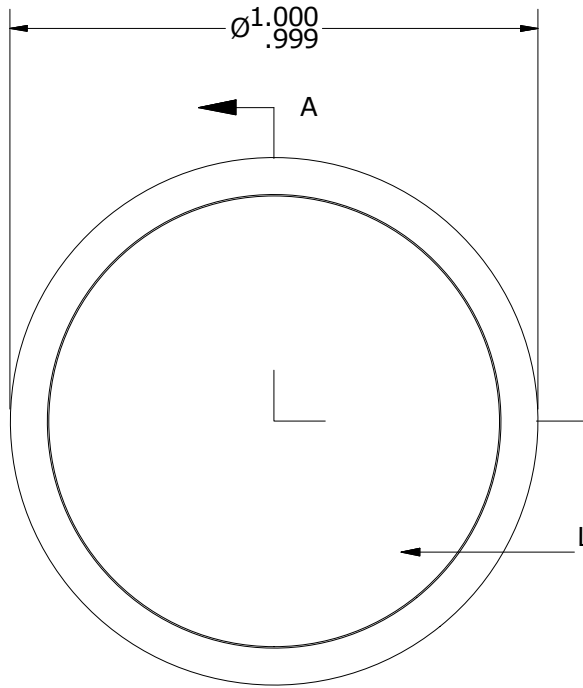
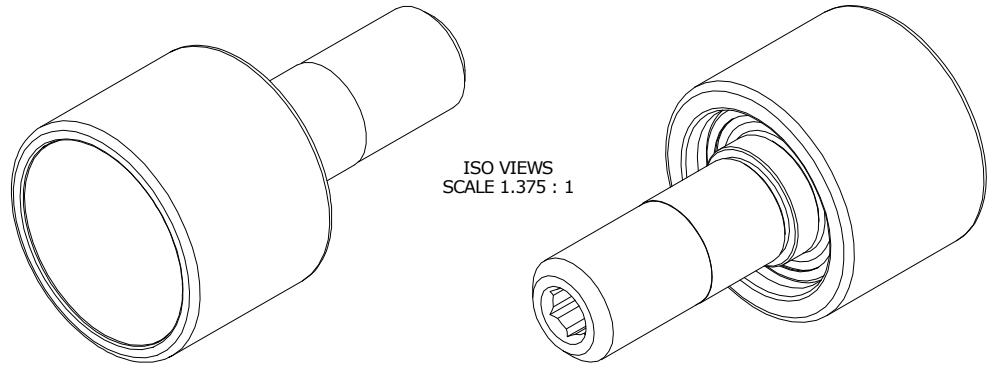


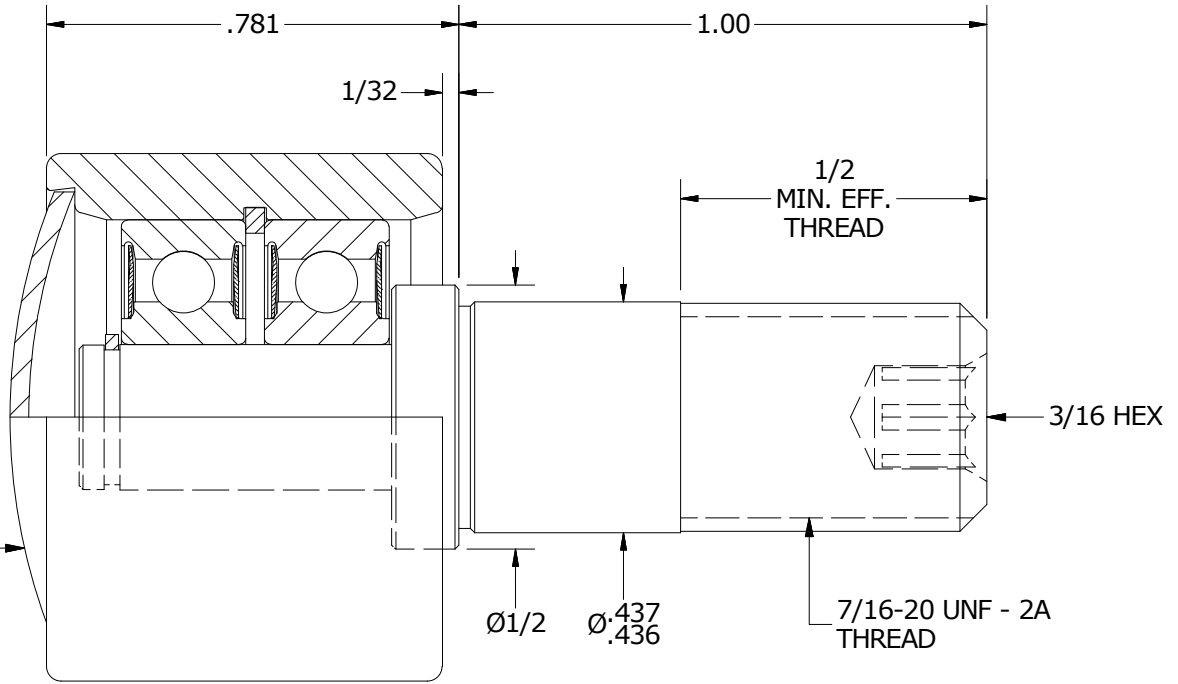
LOAD RATINGS	
RATING	Lbs
RADIAL BASIC DYNAMIC	630
STATIC THRUST LOAD	140
MAXIMUM STATIC CAPACITY	230

- NOTES:  
 1. BALL BEARINGS COME PRE-PACKED WITH GREASE  
 2. ALL EXPOSED SURFACES HAVE BLACK OXIDE  
 3. CUSTOM LASER ETCHING AVAILABLE UPON REQUEST

MS NO.	NSN NO.	DRAWING NO.	PHR-100-A
--------	---------	-------------	-----------



END VIEW  
SCALE 2.75 : 1



SECTION A-A  
SCALE 2.75 : 1

MATERIAL NOTES:

OUTER ROLLER - BEARING STEEL, HEAT TREATED  
 STUD - STEEL  
 BEARING ASSY. - 607 2RS  
 RETAINING RINGS - SPRING STEEL  
 END CAP - STEEL

CUSTOMER PART#

XX = ± .01  
 XXX = ± .005  
 XXXX = ± .0005  
 ANGLES = ± 1'  
 INCH [METRIC]  
 FRACTION = ± 1/32

CARTER MANUFACTURING IS NOT RESPONSIBLE FOR TYPOGRAPHICAL ERRORS

**CARTER MANUFACTURING CO., INC.**

GRAND HAVEN, MICHIGAN 49417

ENGINEERING CHANGE ORDER NOTE

REVISION

PART NAME: ASSEMBLY

PRODUCT TYPE: PHR

**B**

AUTHOR BY  
HG

DRAWN BY  
SGW

CHK'D BY  
SGW

SALES  
KR

MATERIAL  
NOTED

REVISION BY  
MD

DATE  
7/1/2019

DATE  
3/2/2009

DATE  
7/1/2019

DATE  
3/16/2009

SHEET  
1 OF 2